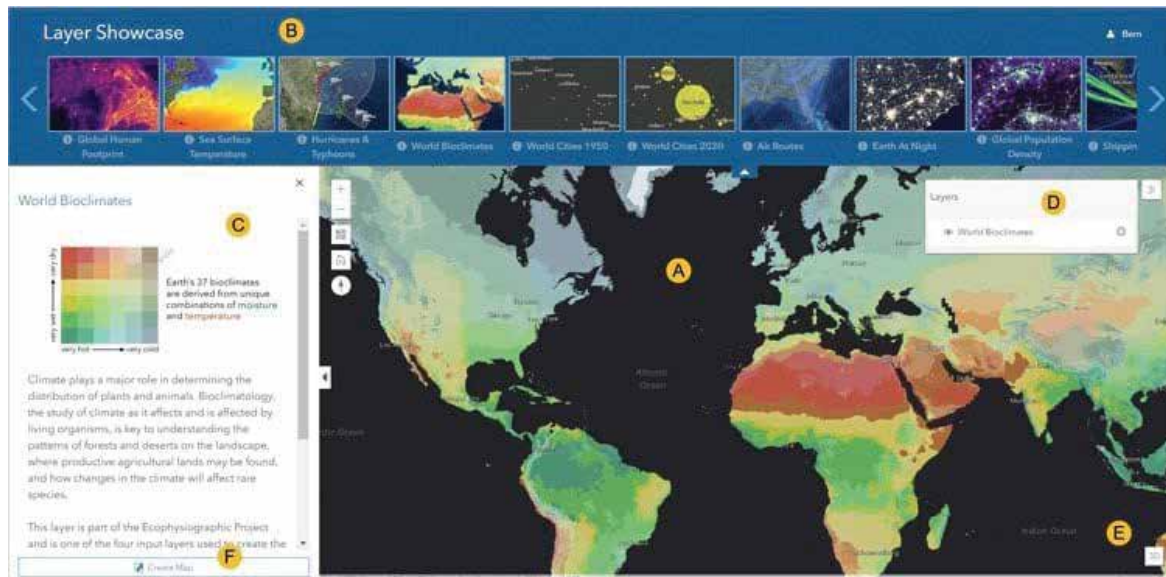


Use the Layer Showcase App to Create and View 2D and 3D Maps



A retractable ribbon displays a gallery of layer types, which can be selected, overlaid, or displayed simultaneously to visualise a comprehensive data set.

Layer Showcase is a group-based, configurable app that you can create in ArcGIS Online. It gives you the ability to display a gallery of layers found within a group. You can display the layers in a ribbon and add them to a map or globe.

This app is handy because you can share it with colleagues within your organisation, giving them the ability to explore layer-based content and, if they wish, quickly create a map or scene based on the layers that have been added to the view.

Layer Showcase includes several easily configurable components, including the following:

- The map, authored by selecting layers from the ribbon.
- A retractable ribbon that displays the layers found in the group, giving viewers the ability to add layers to the map.
- A retractable side panel that displays either the group description when you first open the app or

the layer item description when a layer is added to the map.

- The table of contents, used to toggle layer order and visibility, adjust transparency, and display a legend.
- A 2D/3D map toggle.
- A Create Map button that you can use to create a map or scene once layers have been added.

MAKE A LAYER SHOWCASE

Follow these steps to make and share your own Layer Showcase.

Step 1. Create a group and add the layers you want to the group. Make sure that you include a complete description and a good thumbnail. The Earth Layers



sample group is used in the steps below. View the group description and review the contents and their descriptions to understand how they affect the app.

Step 2. Review group and content sharing settings. Click the group Settings tab.

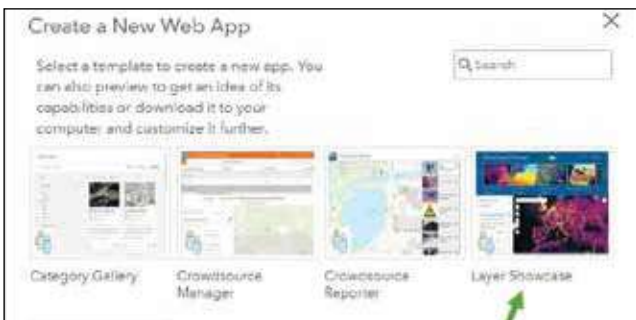


Review the list under Who can view this group? If you want the public to have access, check Everyone (public). Alternatively, you can limit access to people who work in your organisation or to group members.

Step 4. In the Share dialogue box, click Create a Web App.



Step 5. Choose the Layer Showcase app.

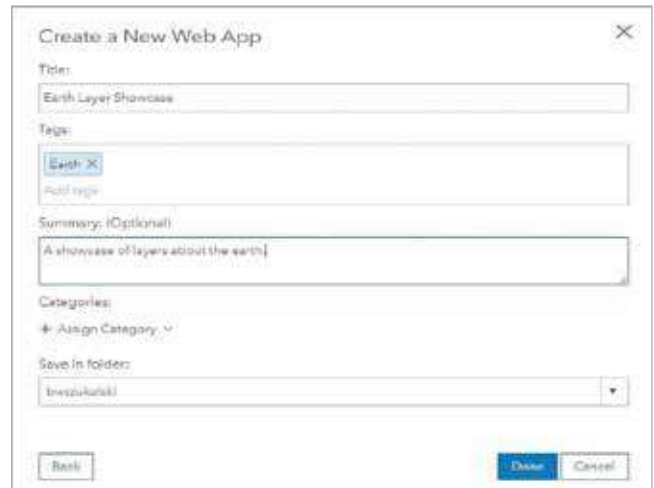


Step 6. Click CREATE WEB APP.

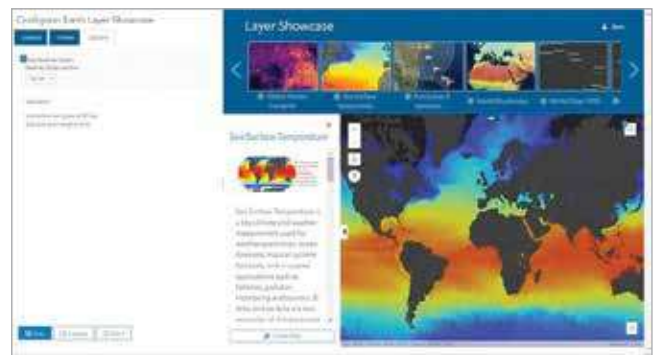


Layer Showcase encourages employees to author maps and scenes from preselected content.

Step 7. Enter a title and any tags, add a summary if you choose, then click Done. This opens the configuration panels for the app.



Step 8. Configure the app as desired. Click the General, Theme, and Options tabs to make changes. Click Save to apply your changes; they will be seen in the preview on the configuration panel. When finished, click Close.



Sharing content in a Layer Showcase offers a great alternative to Map Viewer or Scene Viewer, especially for those who are not GIS experts, to author a map or scene from preselected content. ■