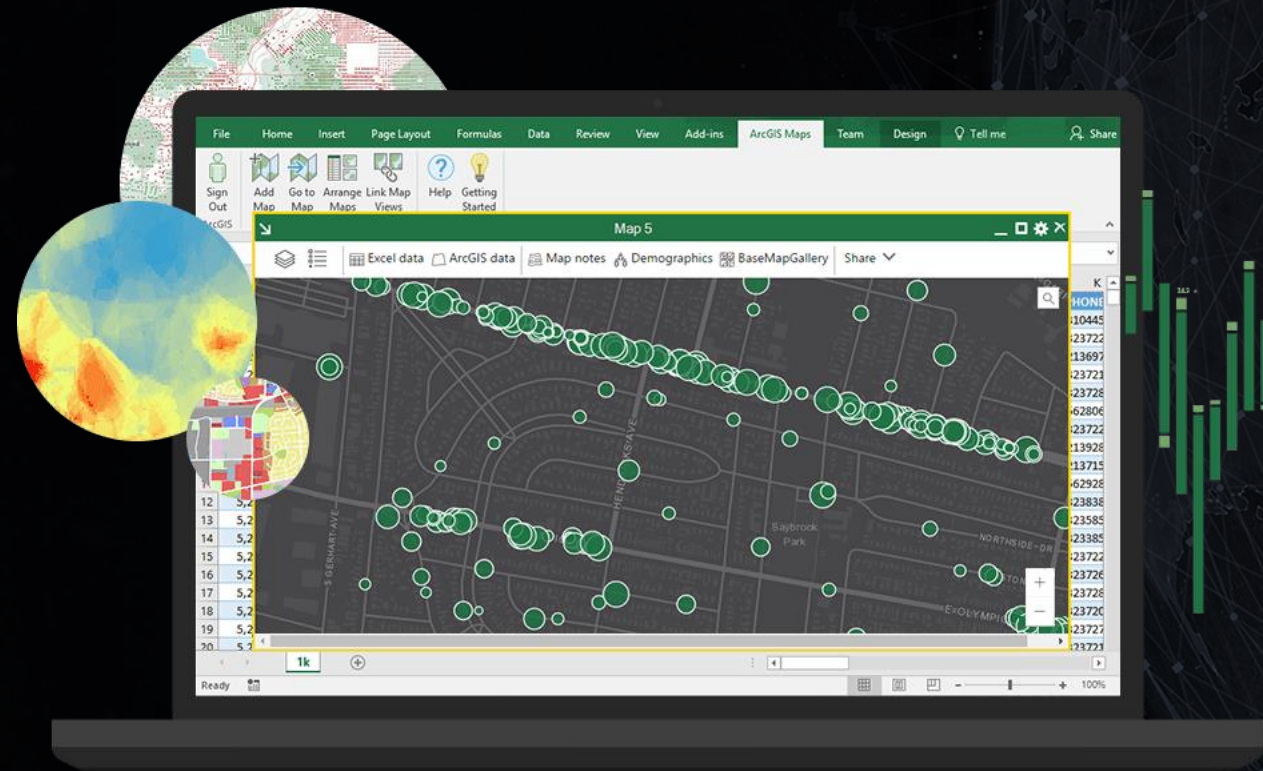
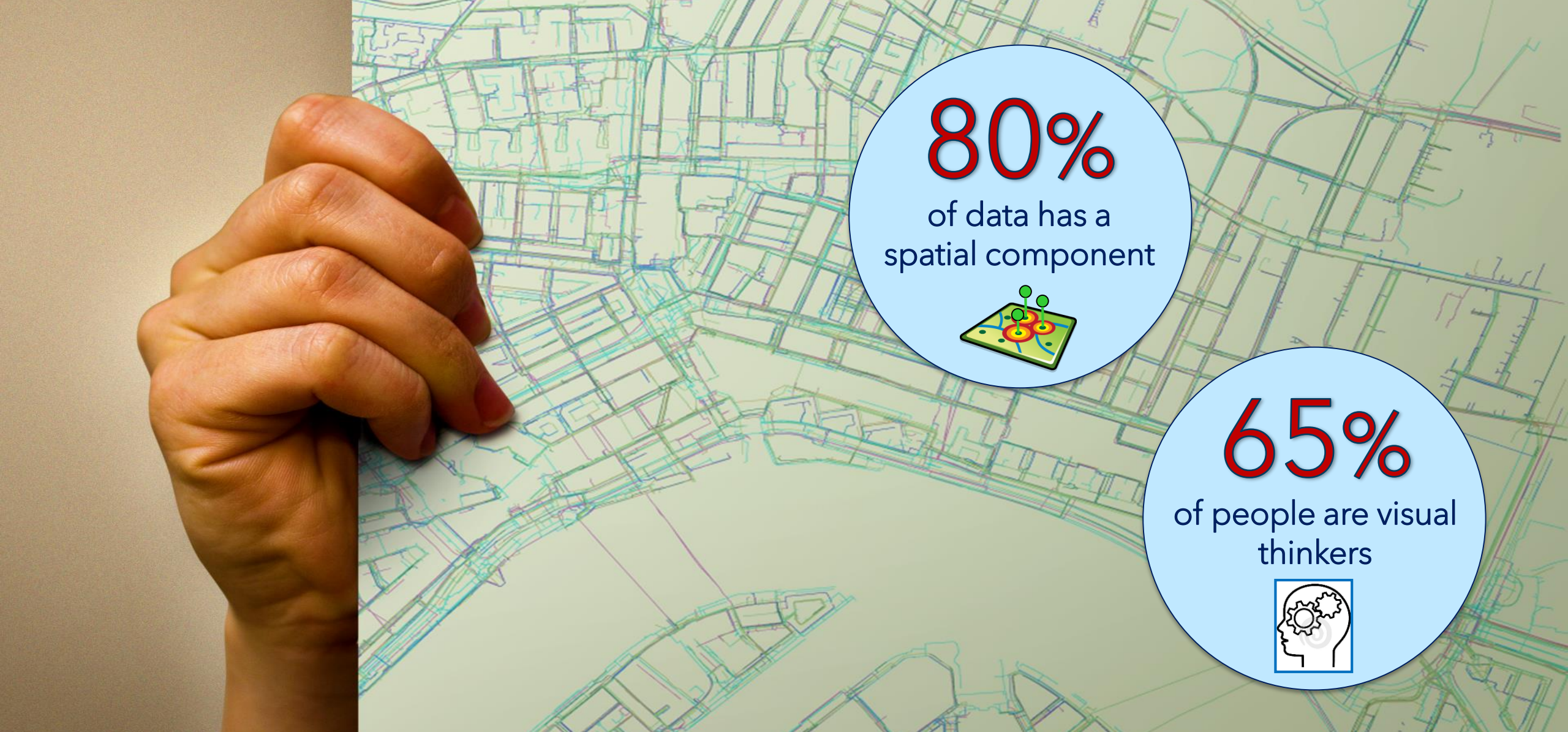


ArcGIS Maps for Office

Mitika Garg





80%
of data has a
spatial component



65%
of people are visual
thinkers



Bring the power of
location to Office users

Spatial + Visual

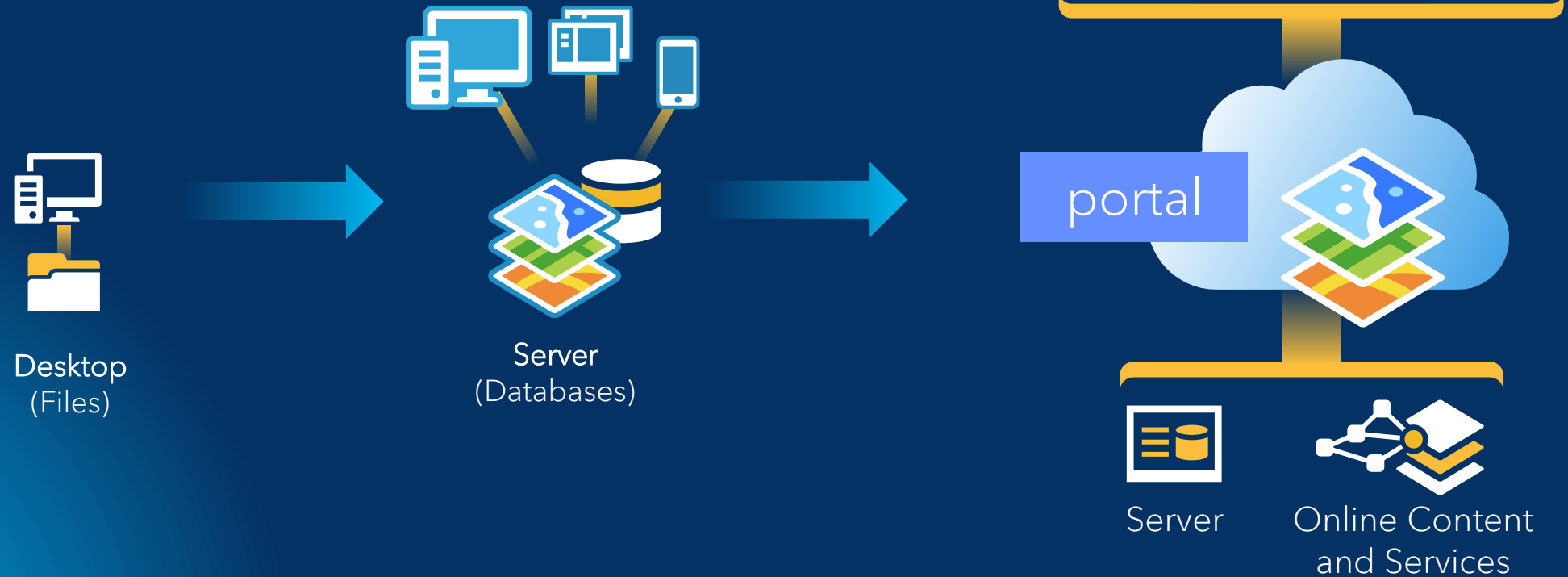
ArcGIS Maps for Office

Map Enable Excel and PowerPoint



ArcGIS

An integrated Web GIS



What are ArcGIS apps?

- And how do they fit into the ArcGIS platform?

Main Themes

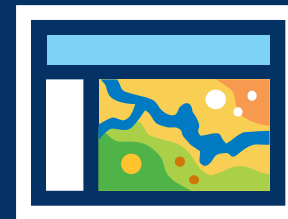
- **Apps** → key “products” from ArcGIS that many end-users interact with
- Apps enable stakeholders to meet a need, solve a problem
- Apps bring the ArcGIS Platform to everyone in the organization



Desktop Apps



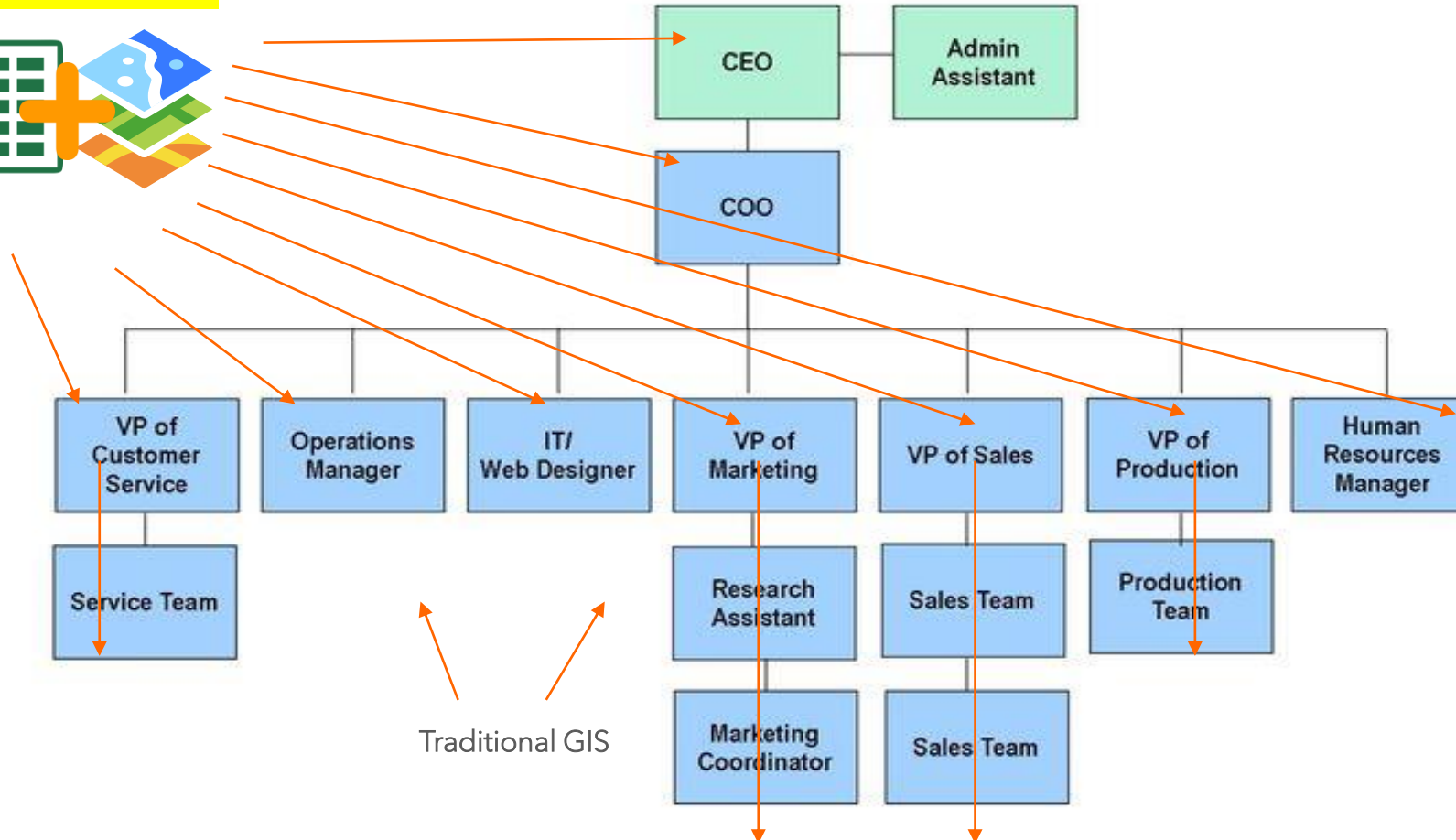
Mobile Apps



Web Apps

Organization Chart

Office plus ArcGIS



Why are Apps Important

- ArcGIS Maps for Office can be used by people who are not GIS savvy
 - Have data in spreadsheets and may not be “location” aware
 - Leverage “simple” mapping and analysis in familiar UX
 - E.g., research scientists, veterinarians, business analysts, and law enforcement
- GIS personnel can share this app with other parts of the organization to further promote their ArcGIS portal content
 - Update data in Excel, then update the shared layer
 - Enable these other teams to contribute data to the ArcGIS portal
- Help promote GIS usage within an organization



ArcGIS Maps for Office

Use maps to Visualize. Analyze. Share. Present.

ArcGIS Maps for Office

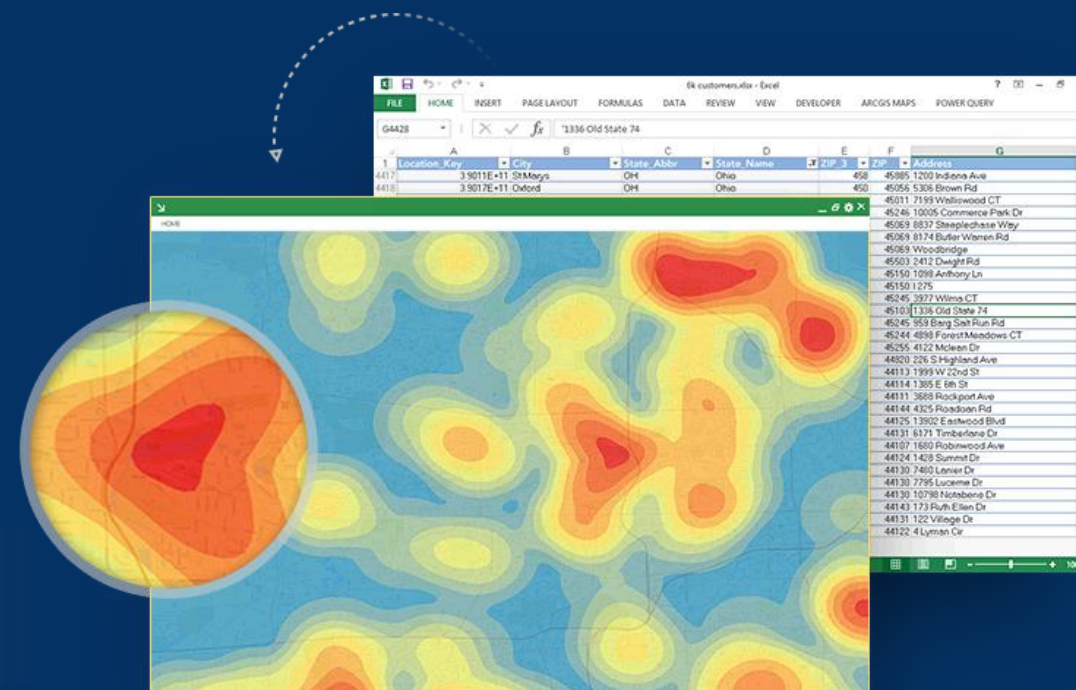
Microsoft Add-in allows you to embed maps into your workflows

Map spreadsheet data

Simple spatial analysis

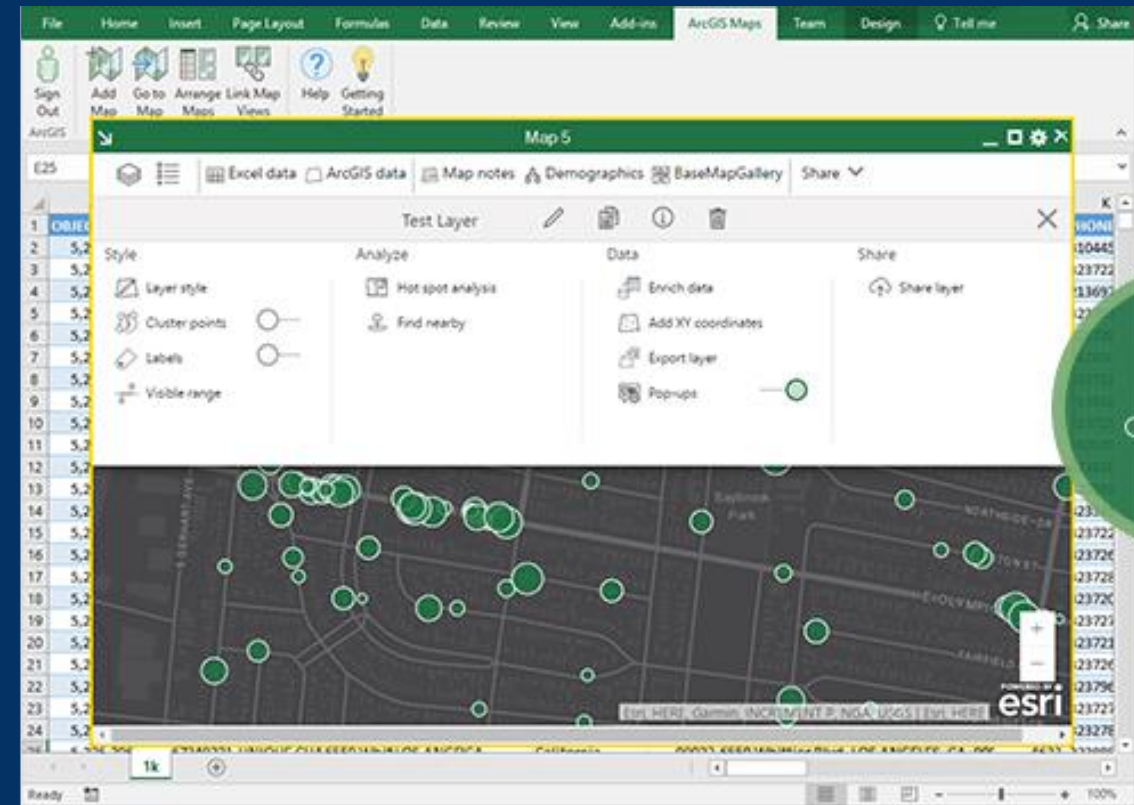
Create interactive maps in PPT

Use and Share with ArcGIS



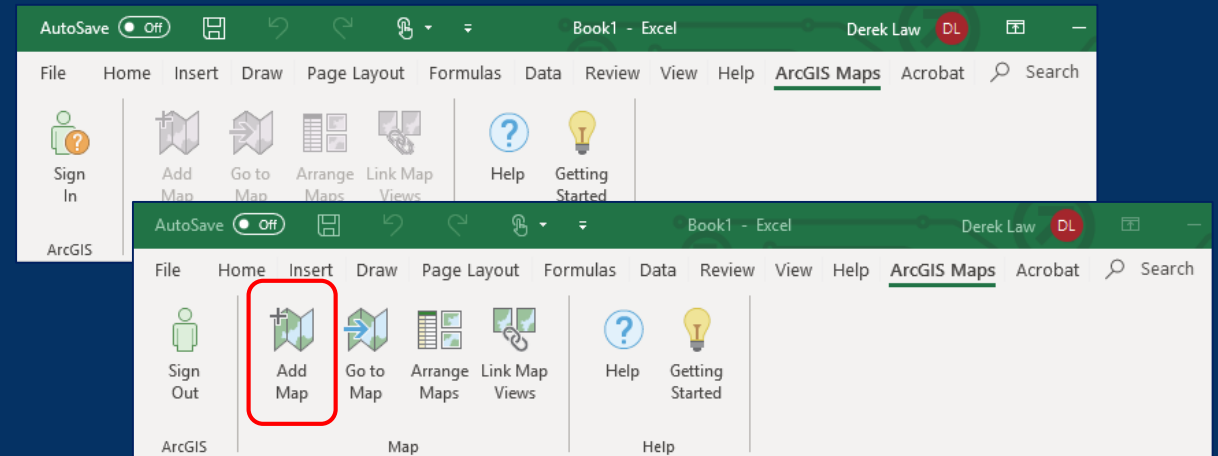
Key Features

- Map and Geo-Enable Excel data
- Enrich Excel data with Demographics
- Interactivity between map and spreadsheet
- Light spatial analysis
- Enrich data with demographics
- Share maps with ArcGIS
- Enable interactive maps in PowerPoint



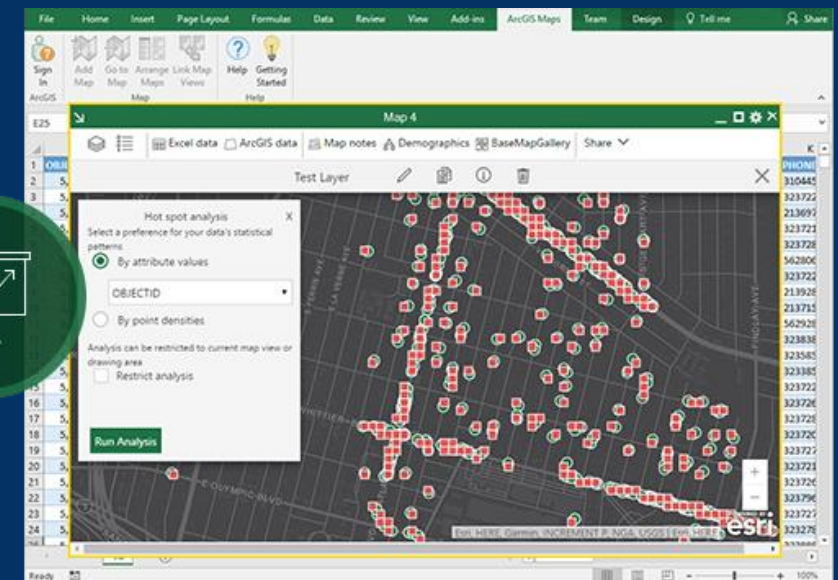
Getting Started with ArcGIS Maps for Office

- Install add-in into Microsoft Office
- Within Excel
 - Login to your ArcGIS organization
 - Enables mapping tools
 - Add Map
 - New Map window appears
 - Capabilities accessed in Map window
 - Enables access to your ArcGIS portal



ArcGIS Maps for Office

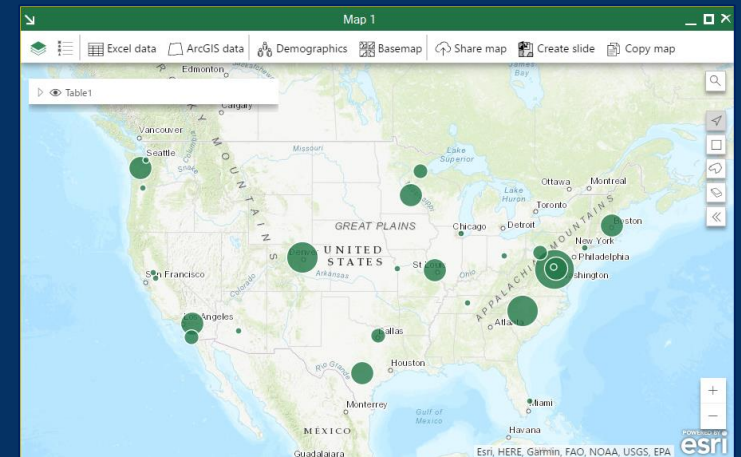
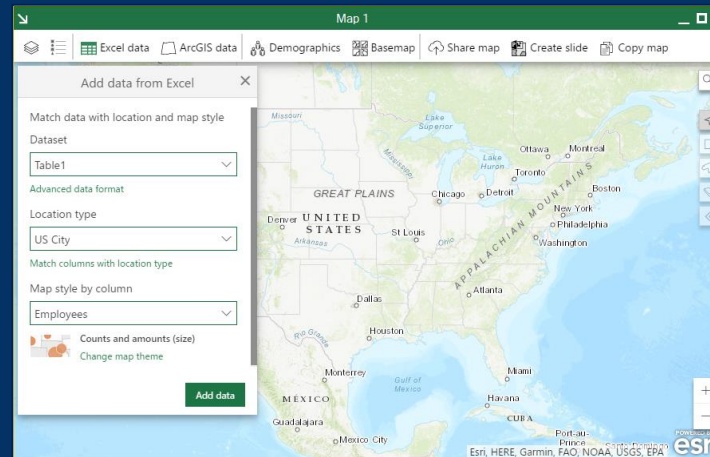
- Add-in that brings ArcGIS into Microsoft Excel and PowerPoint
- Enables mapping and analysis within a familiar UX
 - Empower non-GIS experts with location
- Bring ArcGIS to other parts of your organization
- Visualize spreadsheet data on a map
 - Perform light spatial analysis
 - Infographics and reporting
 - Share data with your ArcGIS portal
 - Works with ArcGIS Online and ArcGIS Enterprise
- Integrate dynamic maps into your presentations



Adding Excel data to a Map

- The app examines spreadsheet data and creates a layer to display on the map
 - Data is referenced via coordinates, addresses, or geographies

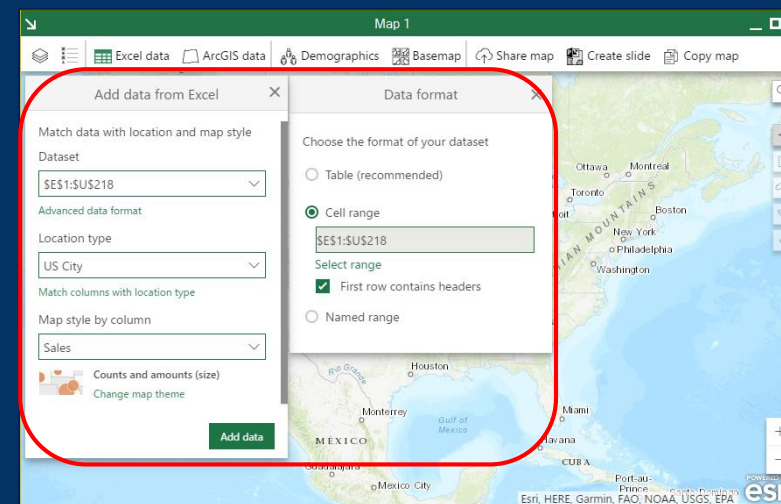
	A	B	C	D	E	F	G	H
1	Name	Street	City	State	Zip	Employees	Type	
2	ESRI-Boston	55 Hancock Road	300	Denvers	MA	01923-4001	35.0000000000000	RO
3	ESRI-California	980 New York Street	N/A	Redlands	CA	92379-8100	27.0000000000000	RO
4	ESRI-Denver	One International Court	N/A	Broomfield	CO	80021-3200	71.0000000000000	RO
5	ESRI-Olympia	606 Columbia Street NW	300	Olympia	WA	98501-1099	38.0000000000000	RO
6	ESRI-Washington, DC	8615 Westwood Center Dr.	N/A	Vienna	VA	22182-2218	183.0000000000000	RO
7	ESRI-Charlotte	3325 Springbank Lane	200	Charlotte	NC	28226-3343	67.0000000000000	RO
8	ESRI-Minneapolis	880 Blue Gentian Road	200	St. Paul	MN	55121-1596	44.0000000000000	RO
9	ESRI-Philadelphia	1400 Morris Drive	102	Chesterbrook	PA	19087-5512	26.0000000000000	RO
10	ESRI-San Antonio	227 North Loop 1604 East	100	San Antonio	TX	78232-1260	35.0000000000000	RO
11	ESRI-St. Louis	820 S Main Street	N/A	St. Charles	MO	63301-3306	45.0000000000000	RO
12	Atlanta Satellite Office	11465 Johns Creek Pkwy	230	Duluth	GA	30097	11.0000000000000	SAT
13	Chicago Satellite Office	221 N. LaSalle Street	963	Chicago	IL	60601	7.0000000000000	SAT
14	Dallas (Business Map)	1202 Richardson	405	Richardson	TX	75080	11.0000000000000	SAT
15	Honolulu Satellite Office	1357 Kapiolani Blvd.	1110	Honolulu	HI	96814	4.0000000000000	SAT
16	Houston Satellite Office	1 Fluor Daniel Drive	D	Sugarland	TX	77478-3838	5.0000000000000	SAT
17	Johnstown Satellite Office	1001 Broad Street	510	Johnstown	PA	15906	11.0000000000000	SAT
18	Kansas City Satellite Office	8700 State Line Rd.	315	Leawood	KS	66206-1569	6.0000000000000	SAT
19	La Jolla Satellite Office	3252 Holiday Court	200	La Jolla	CA	92037	13.0000000000000	SAT
20	Lodi Satellite Office	113 South Main Street	304	Lodi	WI	53555	1.0000000000000	SAT
21	New York City Office	75 Broad Street	N/A	New York	NY	10004-2475	6.0000000000000	SAT
22	Phoenix Development Office	One East Camelback Rd.	550	Phoenix	AZ	85012	2.0000000000000	SAT
23	Portland Satellite Office	280 Fore Street	403	Portland	ME	04101	3.0000000000000	SAT
24	Sacramento Satellite Office	1600 K. Street	4C	Sacramento	CA	95814	6.0000000000000	SAT
25	Seattle Satellite Office	100 S. King Street	500	Seattle	WA	98104	5.0000000000000	SAT
26	West Palm Beach Satellite	303 Evernia Street	300	W Palm Beach	FL	33401	4.0000000000000	SAT
27	Columbus Satellite Office	1085 Beecher Crossing North	A	Gahanna	OH	43230-4563	5.0000000000000	SAT
28	Nashville Satellite Office	321 Billingsly Court	11	Franklin	TN	37067-6445	2.0000000000000	SAT
29								



Adding Excel data to a Map

- If the app is unable to map the data, layer can be defined manually
 - *Dataset* → layer data source
 - E.g., Excel table, cell ranges, and named ranges
 - *Location type* → how the data will be referenced on the map
 - *Style* → how the data will be symbolized

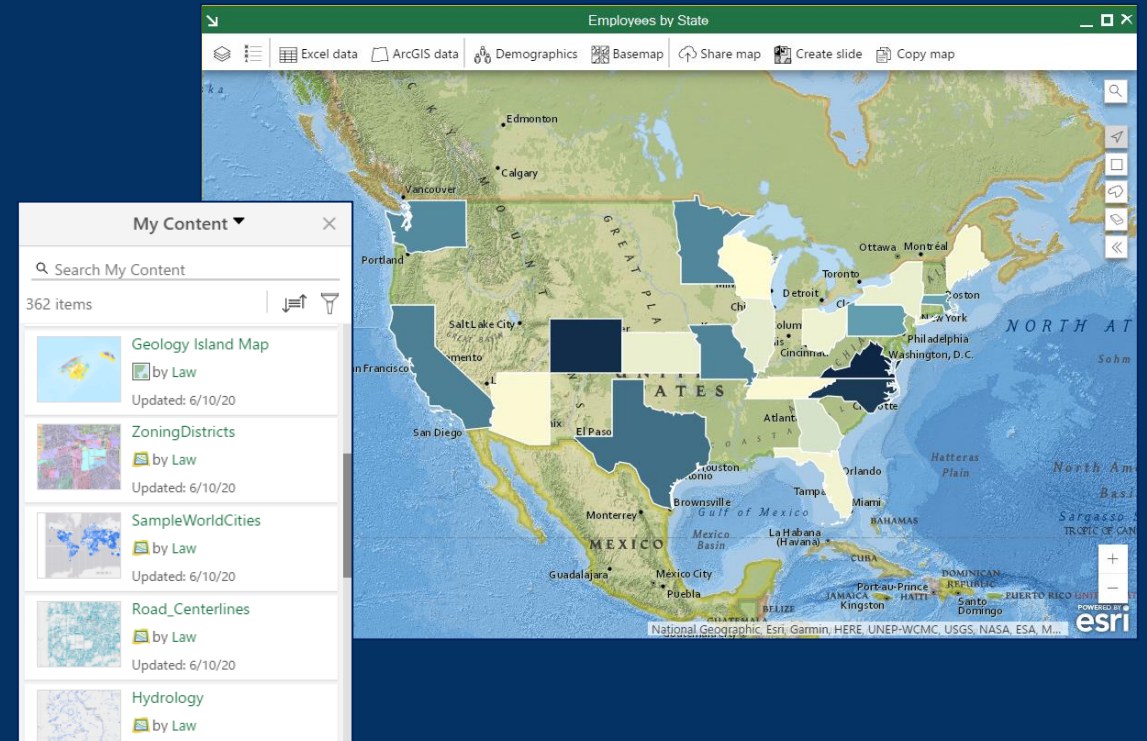
	B	C	D	E	F	G	H	I	J	K
1	Order ID	Order Date	Ship Date	Ship Mode	Customer ID	Customer Name	Segment	Country	City	State
2	CA-2016-152156	11/8/2016	11/11/2016	Second Class	CG-12520	Claire Gute	Consumer	United States	Henderson	Kentucky
3	CA-2016-152156	11/8/2016	11/11/2016	Second Class	CG-12520	Claire Gute	Consumer	United States	Henderson	Kentucky
4	CA-2016-138688	6/12/2016	6/16/2016	Second Class	DV-13045	Darrin Van H	Corporate	United States	Los Angeles	California
5	US-2015-108966	10/11/2015	10/18/2015	Standard Class	SO-20335	Sean O'Donn	Consumer	United States	Fort Lauderdale	Florida
6	US-2015-108966	10/11/2015	10/18/2015	Standard Class	SO-20335	Sean O'Donn	Consumer	United States	Fort Lauderdale	Florida
7	CA-2014-115812	6/9/2014	6/14/2014	Standard Class	BH-11710	Brosina Hoffr	Consumer	United States	Los Angeles	California
8	CA-2014-115812	6/9/2014	6/14/2014	Standard Class	BH-11710	Brosina Hoffr	Consumer	United States	Los Angeles	California
9	CA-2014-115812	6/9/2014	6/14/2014	Standard Class	BH-11710	Brosina Hoffr	Consumer	United States	Los Angeles	California
10	CA-2014-115812	6/9/2014	6/14/2014	Standard Class	BH-11710	Brosina Hoffr	Consumer	United States	Los Angeles	California
11	CA-2014-115812	6/9/2014	6/14/2014	Standard Class	BH-11710	Brosina Hoffr	Consumer	United States	Los Angeles	California
12	CA-2014-115812	6/9/2014	6/14/2014	Standard Class	BH-11710	Brosina Hoffr	Consumer	United States	Los Angeles	California
13	CA-2014-115812	6/9/2014	6/14/2014	Standard Class	BH-11710	Brosina Hoffr	Consumer	United States	Los Angeles	California
14	CA-2017-114412	4/15/2017	4/20/2017	Standard Class	AA-10480	Andrew Allen	Consumer	United States	Concord	North Carolina
15	CA-2016-161389	12/5/2016	12/10/2016	Standard Class	IM-15070	Irene Maddo	Consumer	United States	Seattle	Washington
16	US-2015-118983	11/22/2015	11/26/2015	Standard Class	HP-14815	Harold Pawla	Home Office	United States	Fort Worth	Texas
17	US-2015-118983	11/22/2015	11/26/2015	Standard Class	HP-14815	Harold Pawla	Home Office	United States	Fort Worth	Texas
18	CA-2014-105893	11/11/2014	11/18/2014	Standard Class	PK-19075	Pete Kriz	Consumer	United States	Madison	Wisconsin
19	CA-2014-167164	5/13/2014	5/15/2014	Second Class	AG-10270	Alejandro Grc	Consumer	United States	West Jordan	Utah
20	CA-2014-143336	8/27/2014	9/1/2014	Second Class	ZD-21925	Zuschuss Dor	Consumer	United States	San Francisco	California



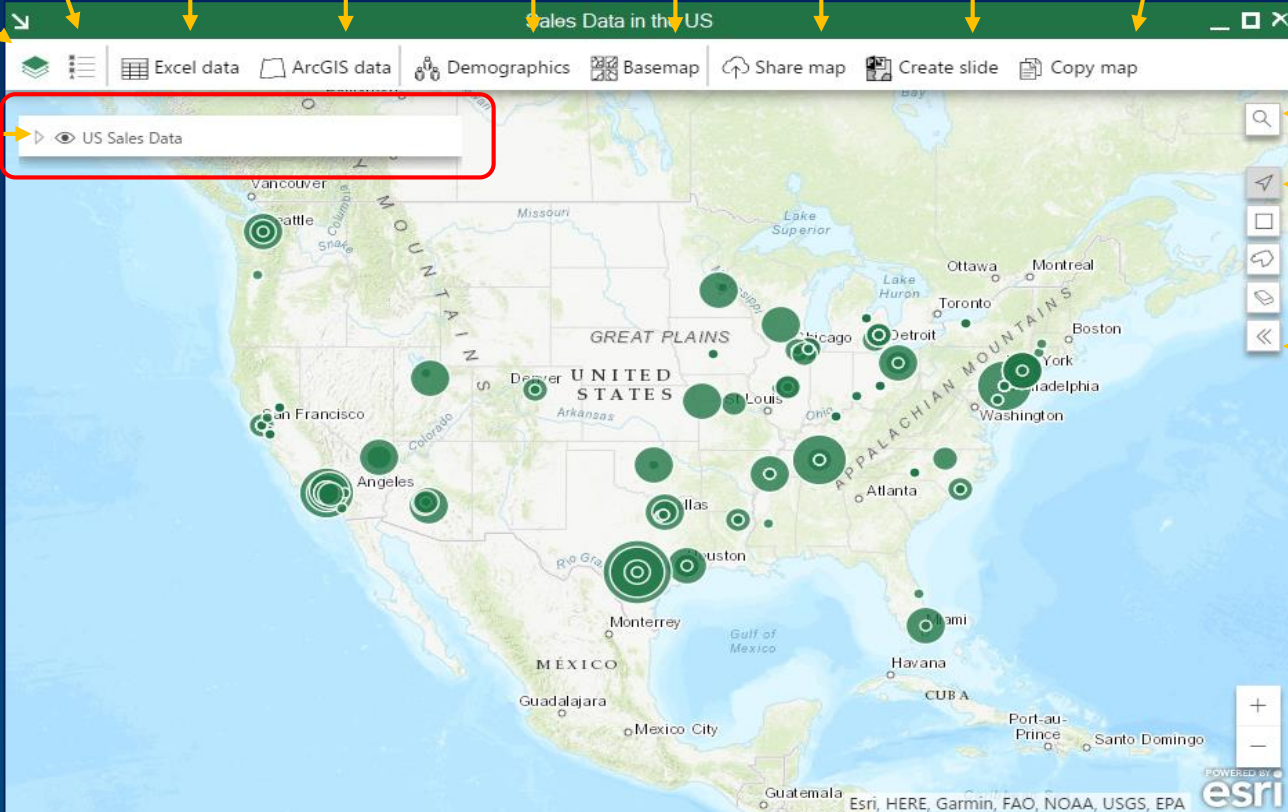
Maps in Excel

- Display spreadsheet data in geographic context
 - Data can be shared with your ArcGIS portal
 - Show infographics, generate reports
- Enables access to ArcGIS portal data
- Provides mapping & analysis in a familiar UX
- Saved as part of the Excel workbook

* Note: These are not web map items



Mapping Capabilities in Excel



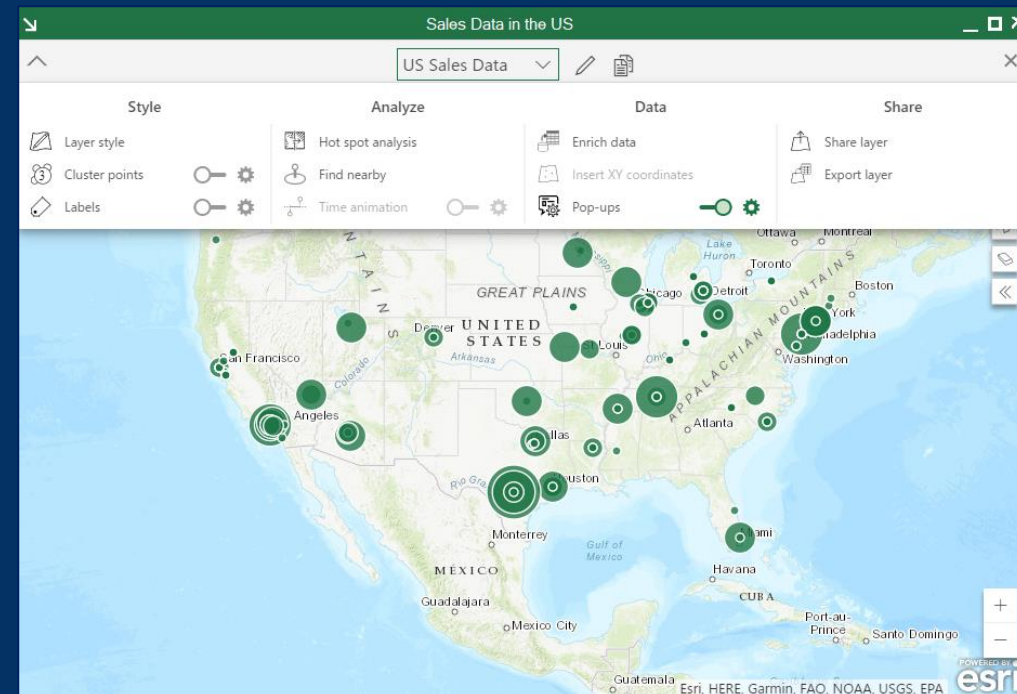
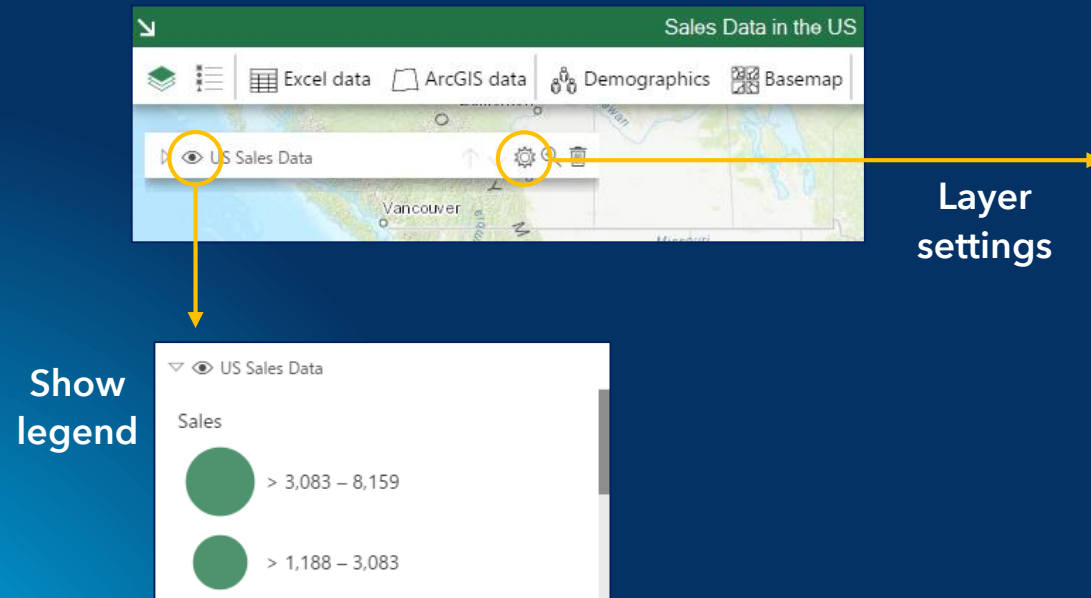
The screenshot displays the Esri ArcGIS Online interface with a map of the United States. The map is overlaid with green circles of varying sizes, representing data points. The interface includes a top toolbar with icons for adding data, enriching data, sharing, and creating slides. A layer card on the left shows the 'US Sales Data' layer. The right side of the interface features a search bar and a vertical toolbar with icons for search, pan, and selection tools.

Annotations and Capabilities:

- Show layers:** Points to the layer card on the left.
- Show legend:** Points to the legend icon in the top toolbar.
- Add Excel data:** Points to the 'Excel data' icon in the top toolbar.
- Add ArcGIS data:** Points to the 'ArcGIS data' icon in the top toolbar.
- Enrich with demographic data:** Points to the 'Demographics' icon in the top toolbar.
- Change basemap:** Points to the 'Basemap' icon in the top toolbar.
- Share to ArcGIS portal:** Points to the 'Share map' icon in the top toolbar.
- Create slide for PowerPoint:** Points to the 'Create slide' icon in the top toolbar.
- Make a copy:** Points to the 'Copy map' icon in the top toolbar.
- Search:** Points to the search bar on the right.
- Pan:** Points to the pan icon in the right toolbar.
- Selection tools:** Points to the selection tools icon in the right toolbar.
- Show selection results:** Points to the 'Show selection results' button in the right toolbar.

Layer Card Properties

- Configure symbology, labels, and pop ups
- Perform analysis, data enrichment, generate infographics, and reports
- Share layer

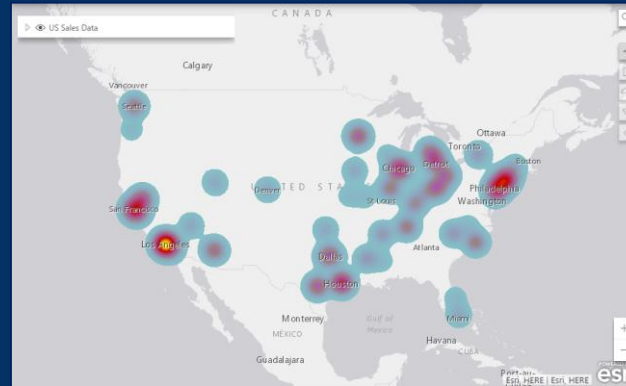


Layer Style

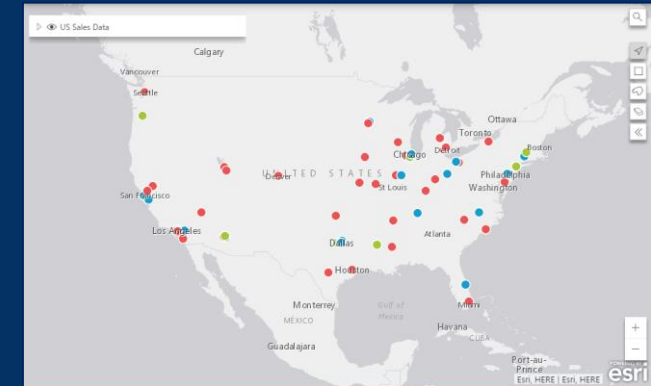
- Symbolology



Single symbol



Heat map



Unique symbols



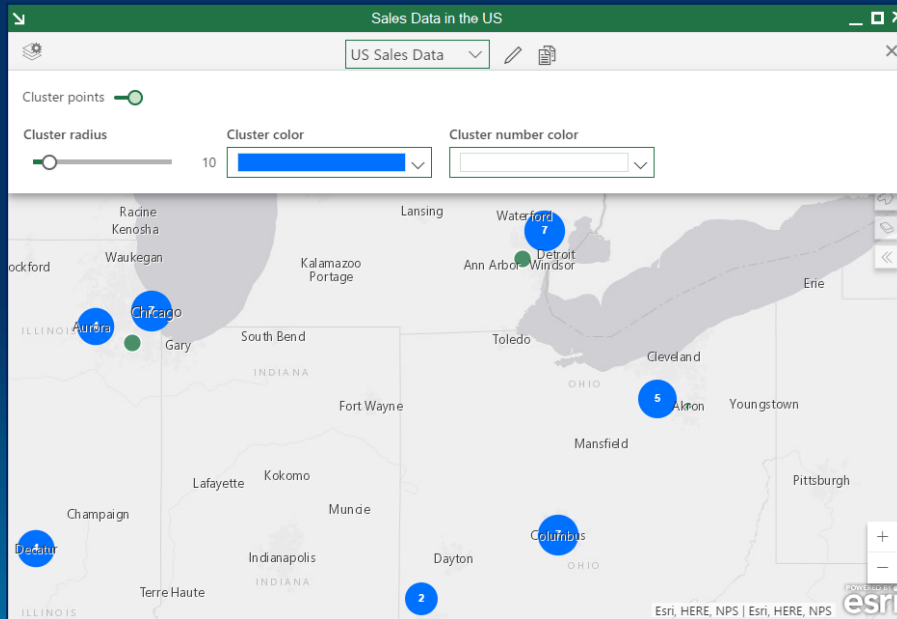
Counts & amounts
(size)



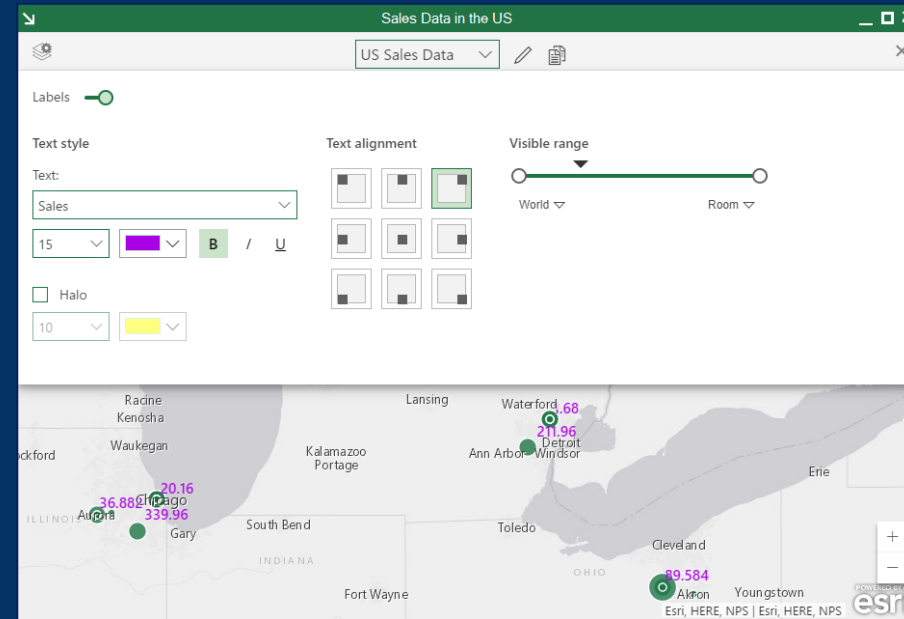
Counts & amounts
(color)

Layer Style

- Additional rendering options

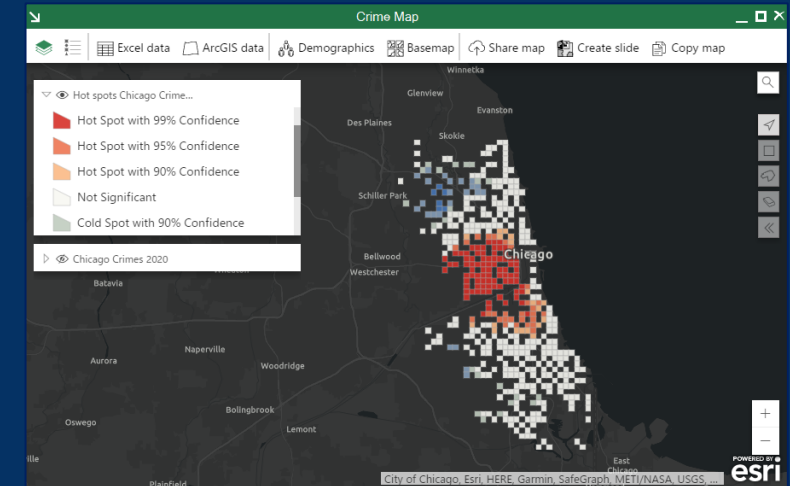
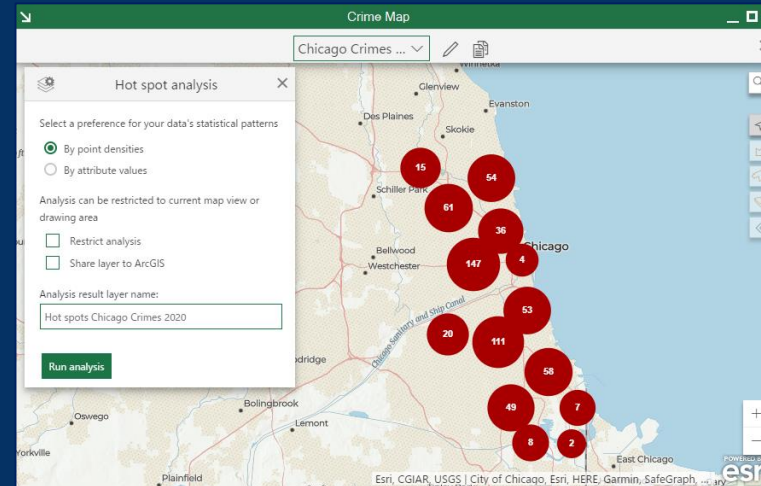
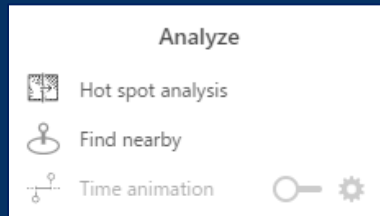


Clustering

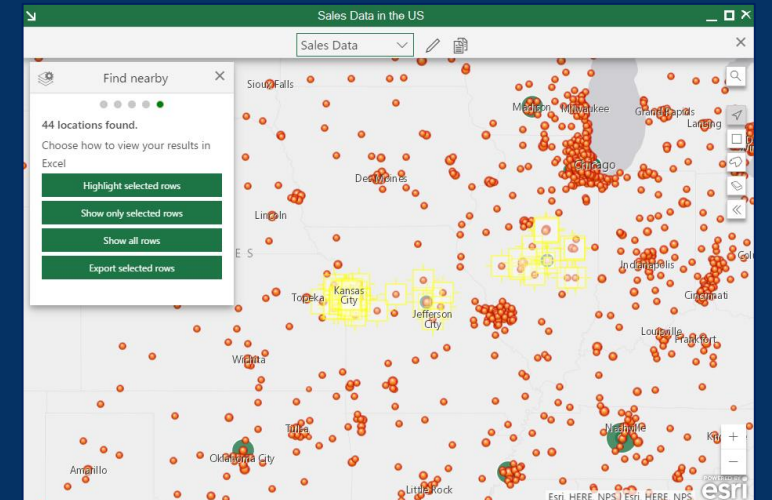
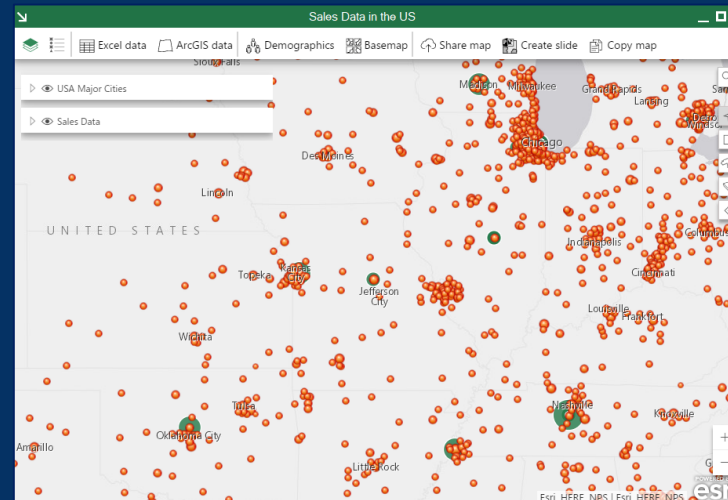


Labels

Analyze data



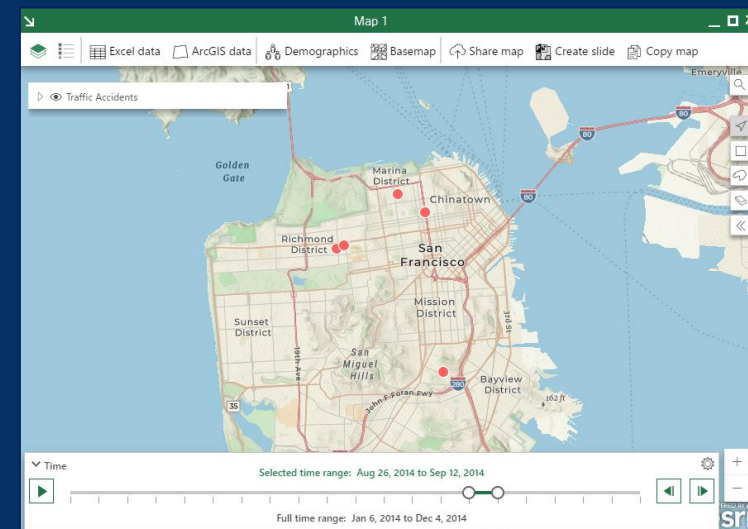
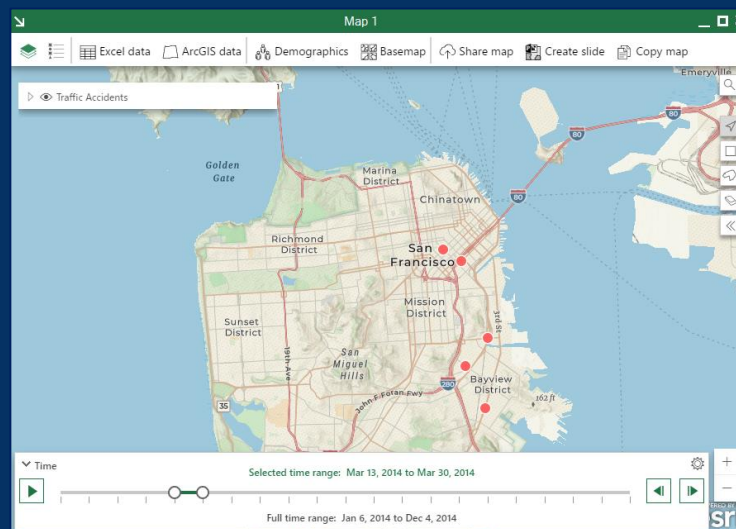
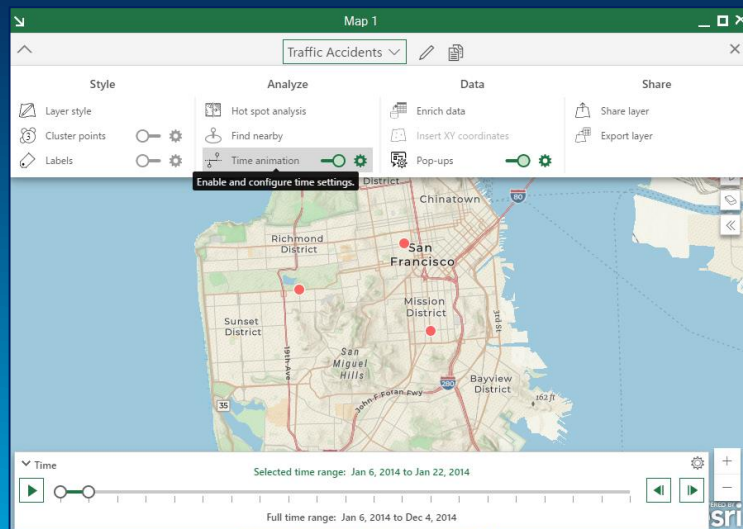
Hot spot analysis



Find nearby

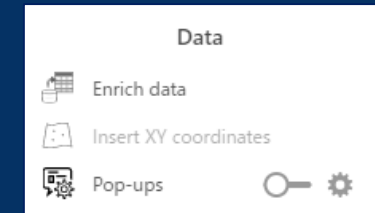
Analyze data – Time Animation

- A date type field needs to be in the data
- Time slider added to the Map display
 - Auto-play or step through intervals (configurable)
 - Visualize data changes over time

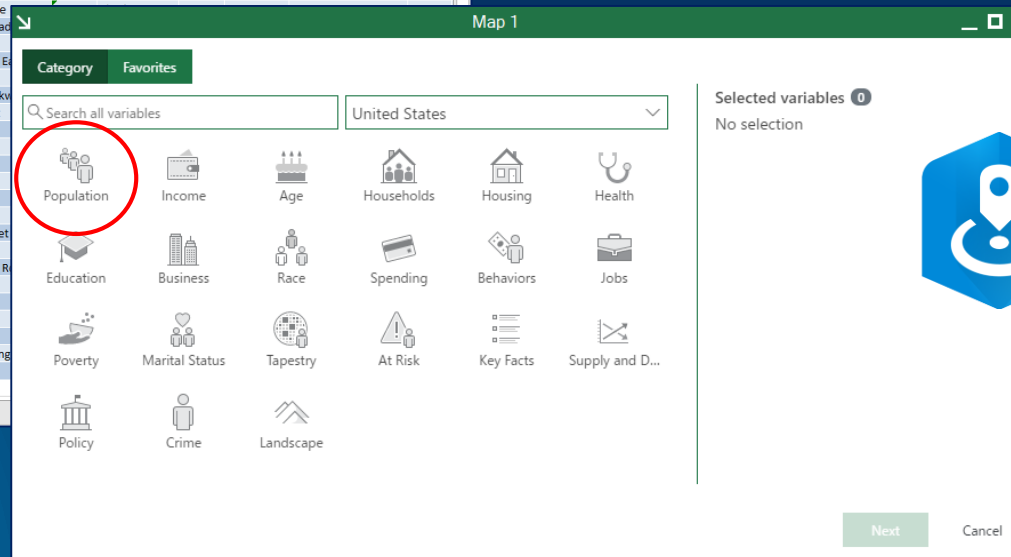


Enrich Data

- Add demographic data from Esri demographics to your data
 - E.g., incomes, household size, population, etc.
- Insert XY coordinate fields → adds to spreadsheet



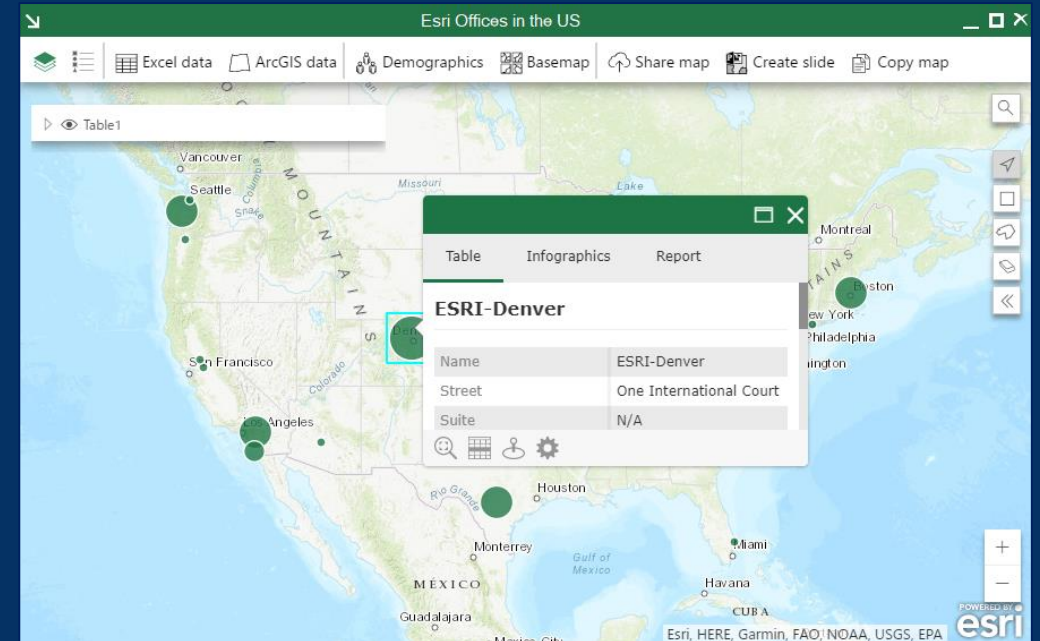
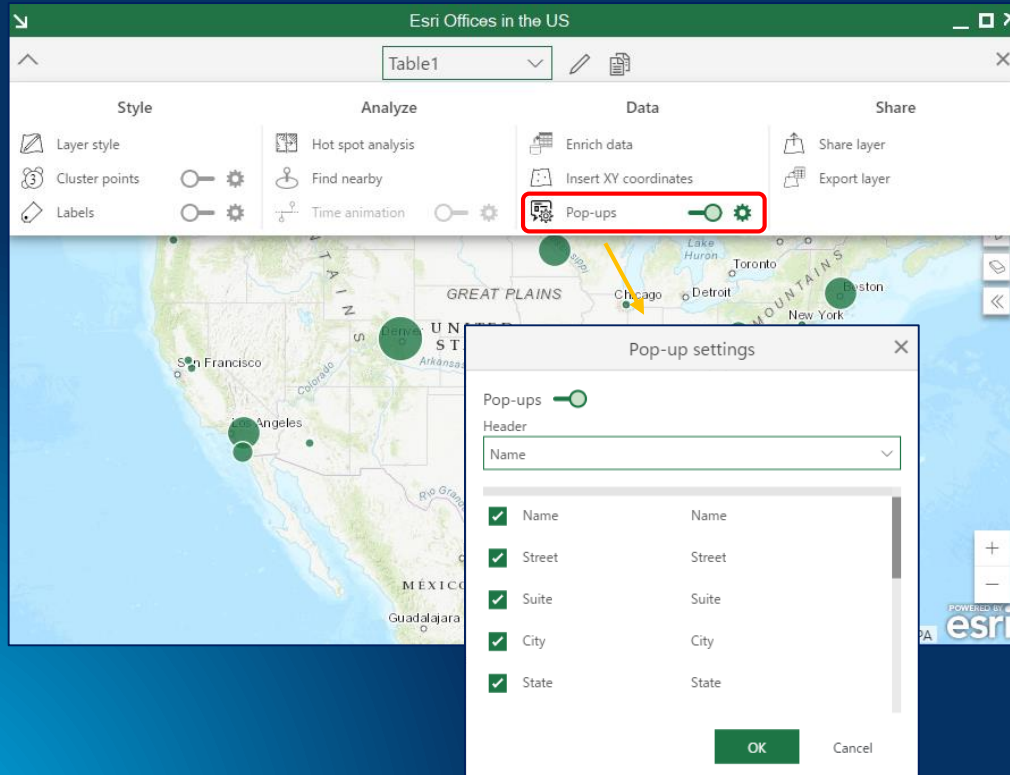
	A	B	C	D	E	F	G	H
1	Name	Street	Suite	City	State	Zip	Employees	Type
2	ESRI-Boston	55 Ferncroft Road	300	Danvers	MA	01923-4001	35.000000000000	RO
3	ESRI-California	380 New York Street	N/A	Redlands	CA	92373-8100	27.000000000000	RO
4	ESRI-Denver	One International Court	N/A	Broomfield	CO	80021-3200	71.000000000000	RO
5	ESRI-Olympia	606 Columbia Street NW	300	Olympia	WA	98501-1099	38.000000000000	RO
6	ESRI-Washington, DC	8615 Westwood Center Dr.	N/A	Vienna	VA	22182-2218	183.000000000000	RO
7	ESRI-Charlotte	3325 Springbank Lane						
8	ESRI-Minneapolis	880 Blue Gentian Road						
9	ESRI-Philadelphia	1400 Morris Drive						
10	ESRI-San Antonio	227 North Loop 1604 East						
11	ESRI-St. Louis	820 S Main Street						
12	Atlanta Satellite Office	11465 Johns Creek Pkwy						
13	Chicago Satellite Office	221 N. LaSalle Street						
14	Dallas (Business Map)	1202 Richardson						
15	Honolulu Satellite Office	1357 Kapiolani Blvd.						
16	Houston Satellite Office	1 Fluor Daniel Drive						
17	Johnstown Satellite Office	1001 Broad Street						
18	Kansas City Satellite Office	8700 State Line Rd.						
19	La Jolla Satellite Office	3252 Holiday Court						
20	Lodi Satellite Office	113 South Main Street						
21	New York City Office	75 Broad Street						
22	Phoenix Development Office	One East Camelback Rd.						
23	Portland Satellite Office	280 Fore Street						
24	Sacramento Satellite Office	1600 K. Street						
25	Seattle Satellite Office	100 S. King Street						
26	West Palm Beach Satellite	303 Evernia Street						
27	Columbus Satellite Office	1085 Beecher Crossing						
28	Nashville Satellite Office	321 Billingsly Court						
29								



	B	C	D	E	F	G	H	N
1	Street	Suite	City	State	Zip	Employees	Type	Total Population
2	55 Ferncroft Road	300	Danvers	MA	01923-4001	35.000000000000	RO	2413990
3	380 New York Street	N/A	Redlands	CA	92373-8100	27.000000000000	RO	1812741
4	One International Court	N/A	Broomfield	CO	80021-3200	71.000000000000	RO	2252250
5	606 Columbia Street NW	300	Olympia	WA	98501-1099	38.000000000000	RO	443865
6	8615 Westwood Center Dr.	N/A	Vienna	VA	22182-2218	183.000000000000	RO	4232821
7	3325 Springbank Lane	200	Charlotte	NC	28226-3343	67.000000000000	RO	1746196
8	880 Blue Gentian Road	200	St. Paul	MN	55121-1596	44.000000000000	RO	2485505
9	1400 Morris Drive	102	Chesterbrook	PA	19087-5512	26.000000000000	RO	4311407
10	227 North Loop 1604 East	100	San Antonio	TX	78242-1260	35.000000000000	RO	2054357
11	820 S Main Street	N/A	St. Charles	MO	63301-3306	45.000000000000	RO	1640837
12	11465 Johns Creek Pkwy	230	Duluth	GA	30097	11.000000000000	SAT	178966
13	221 N. LaSalle Street	863	Chicago	IL	60601	7.000000000000	SAT	4569217
14	1202 Richardson	405	Richardson	TX	75080	11.000000000000	SAT	3771772
15	1357 Kapiolani Blvd.	1110	Honolulu	HI	96814	4.000000000000	SAT	923736
16	1 Fluor Daniel Drive	D	Sugarland	TX	77478-3838	5.000000000000	SAT	2042563
17	1001 Broad Street	510	Johnstown	PA	15906	11.000000000000	SAT	178107
18	8700 State Line Rd.	315	Leawood	KS	66206-1569	6.000000000000	SAT	1525583
19	3252 Holiday Court	200	La Jolla	CA	92037	13.000000000000	SAT	2093844
20	113 South Main Street	304	Lodi	WI	53555	1.000000000000	SAT	583429
21	75 Broad Street	N/A	New York	NY	10004-2475	6.000000000000	SAT	12763126
22	One East Camelback Rd.	550	Phoenix	AZ	85012	2.000000000000	SAT	3319012
23	280 Fore Street	403	Portland	ME	4101	3.000000000000	SAT	2220000
24	1600 K. Street	4C	Sacramento	CA	95814	6.000000000000	SAT	1868087
25	100 S. King Street	500	Seattle	WA	98104	5.000000000000	SAT	2605867
26	303 Evernia Street	300	W Palm Beach	FL	33401	4.000000000000	SAT	1199409
27	1085 Beecher Crossing North	A	Gahanna	OH	43230-4563	5.000000000000	SAT	1624741
28	321 Billingsly Court	11	Franklin	TN	37067-6445	2.000000000000	SAT	897849
29								

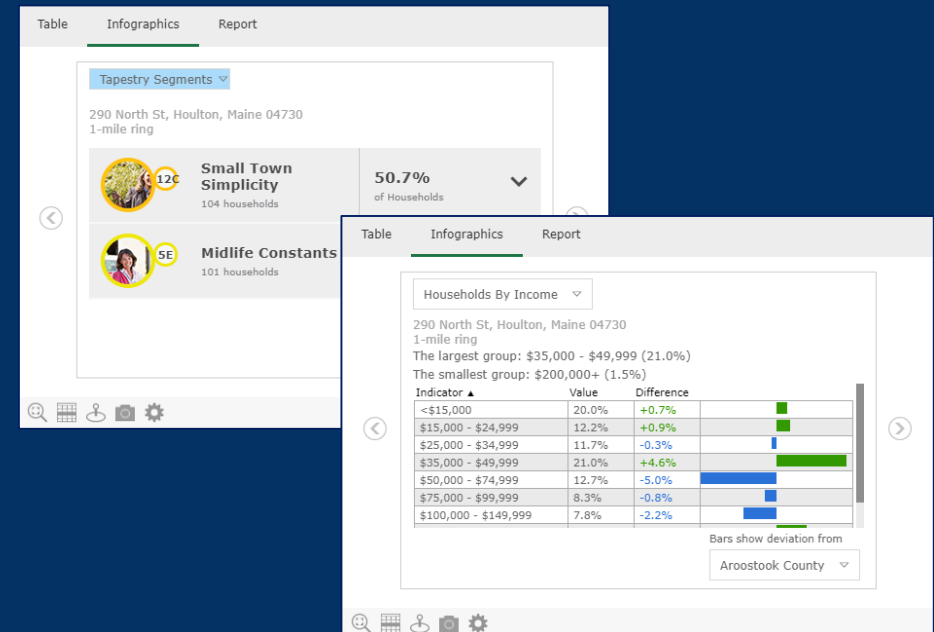
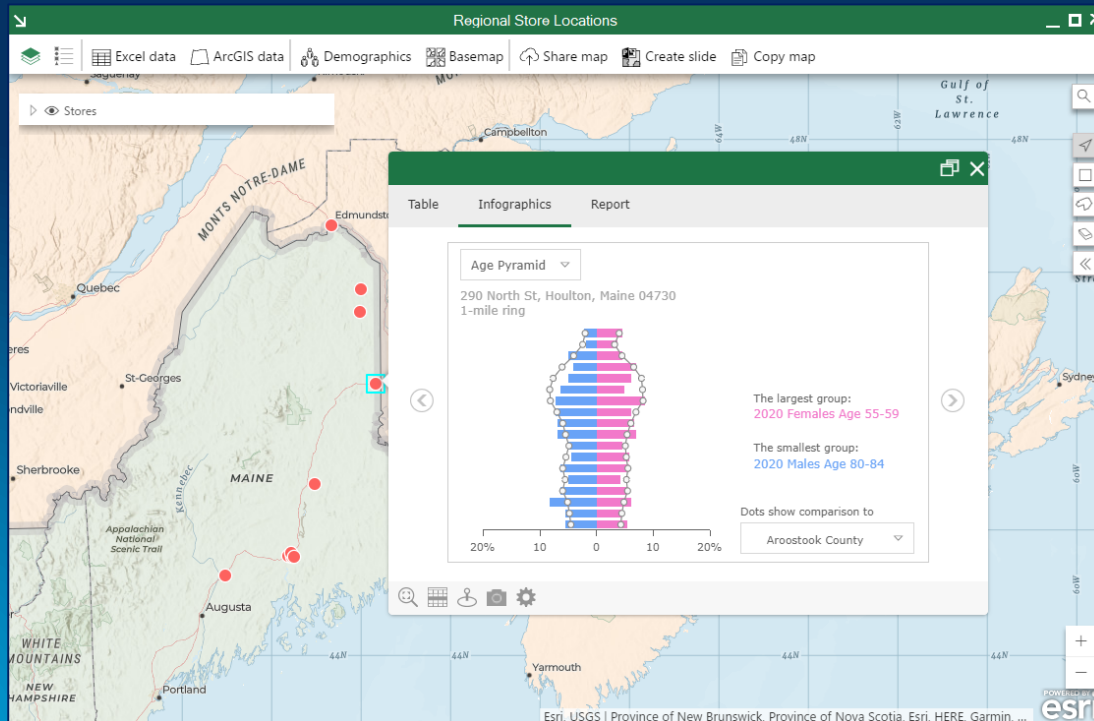
Configure Pop Ups

- Control which attributes will display, set alias names



Pop Ups: Infographics

- Generate infographics about selected feature
 - Demographic data from Esri demographics
 - Variables displayed are configurable



Pop Ups: Reports

- Create report about selected feature
 - Demographic data from Esri demographics
 - Save as PDF or Excel data

Table

Infographics

Report

Report

Demographic and Income Profile

Format

PDF

Show data for

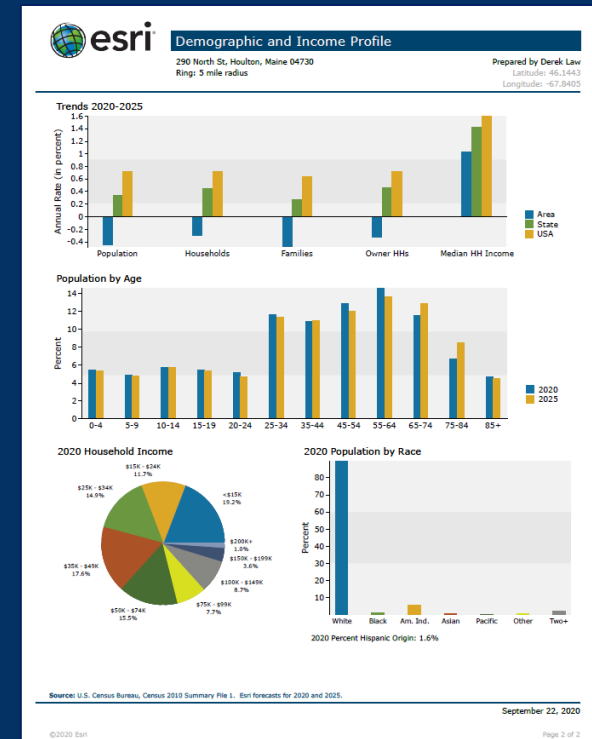
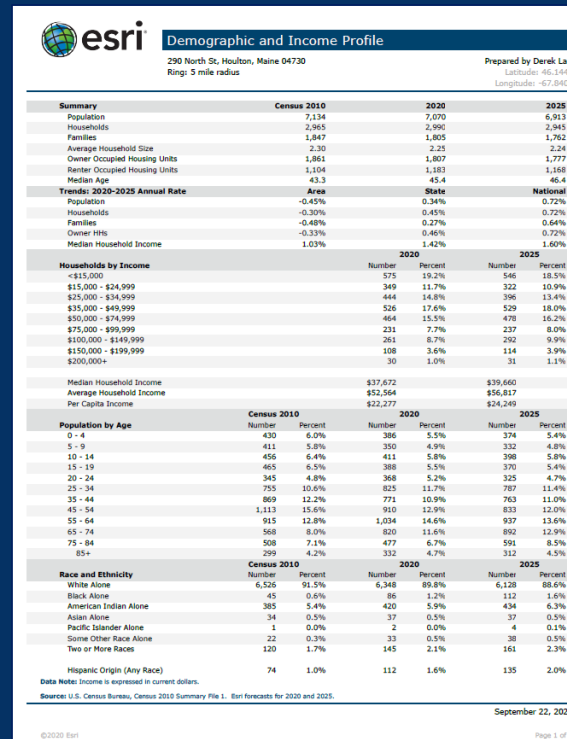
Radius

Radius

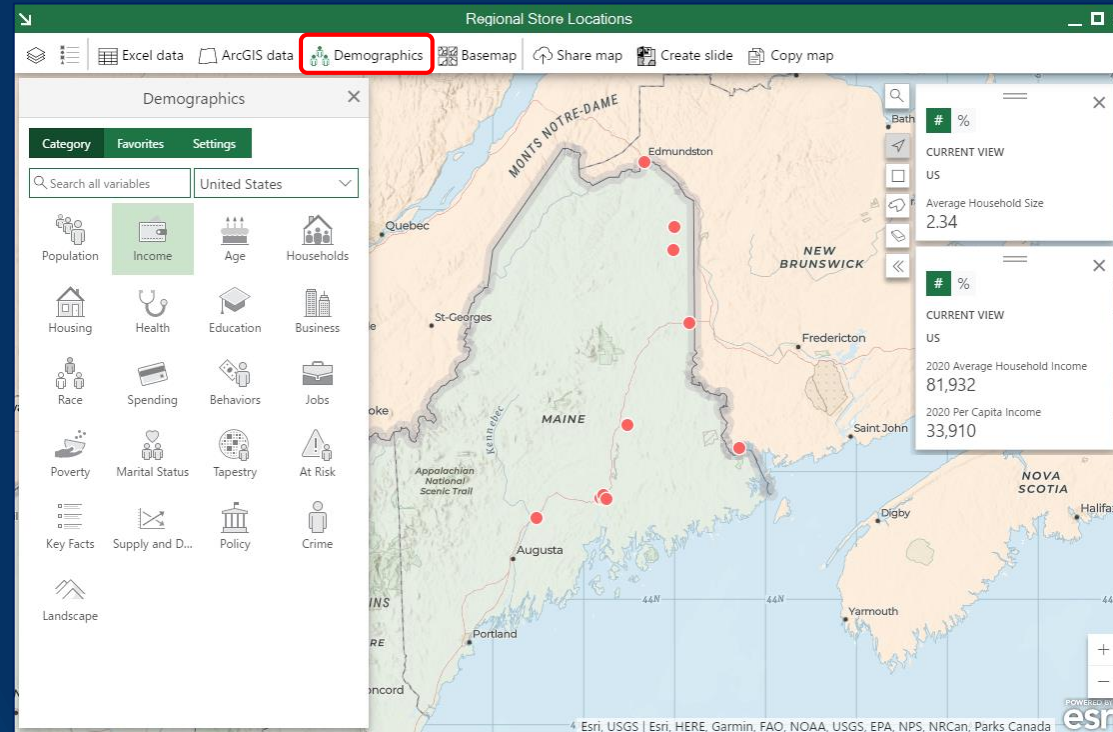
5

miles

Create report



Demographic Cards

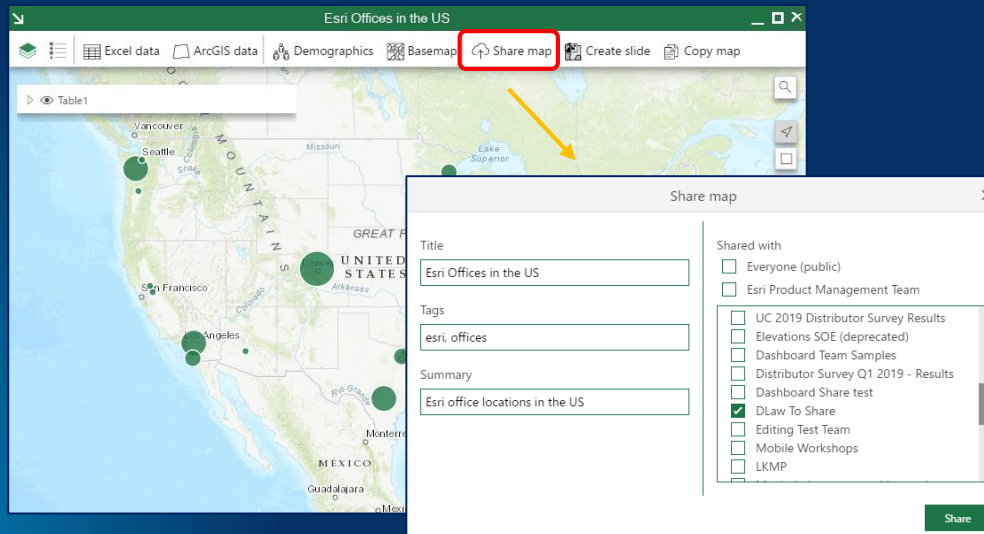


Demographics - Average Household Cards

Average Household Income Cards

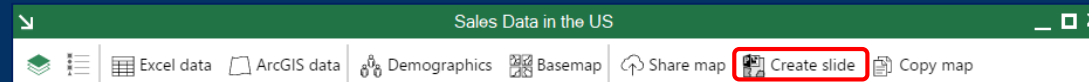
Share data to ArcGIS

- Layer created from the spreadsheet data can be shared to ArcGIS
- Create new hosted feature layer; can share updates
 - Set access permissions
- Enables other ArcGIS portal members to use the data
- Data can be used in the larger platform

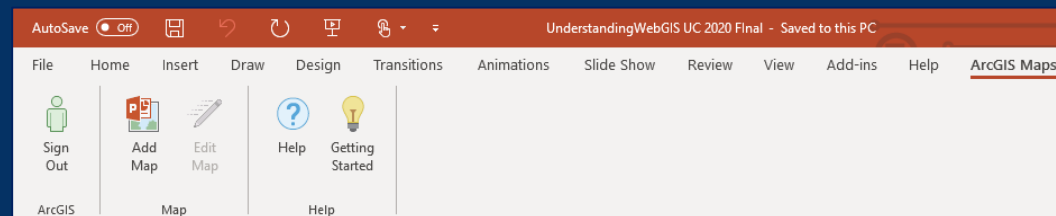


Working with Microsoft PowerPoint

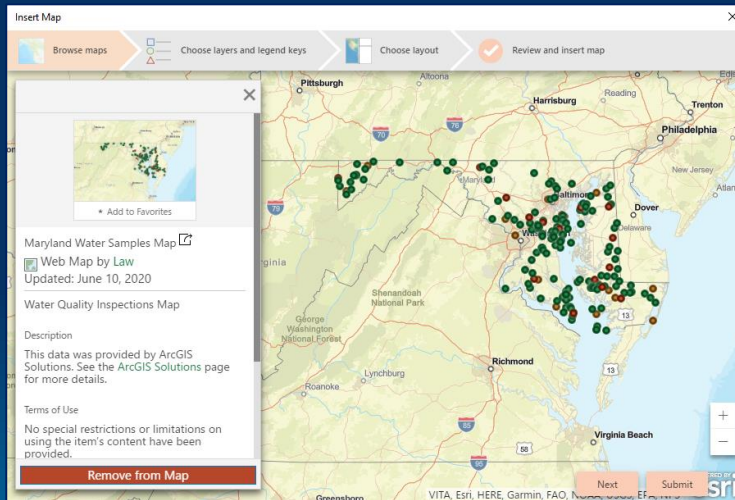
- From Excel, you can export a map as a slide to PowerPoint



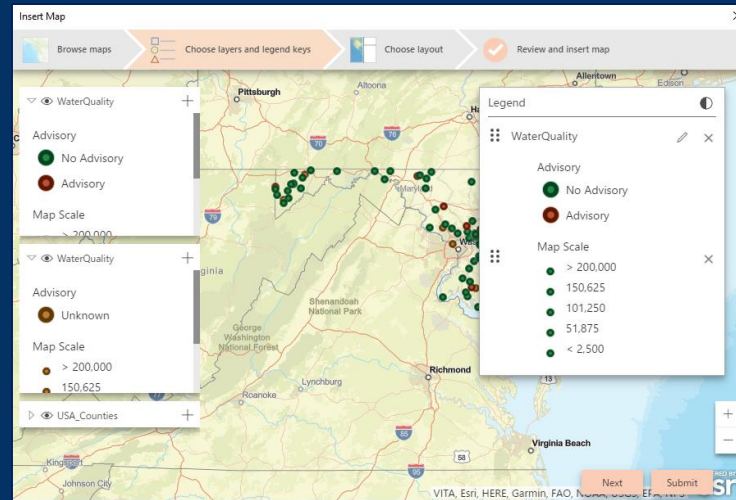
- In PowerPoint,
 - Login to your ArcGIS organization
 - Add a web map from ArcGIS, configure its layers and slide layout
 - Add an interactive map to your presentation



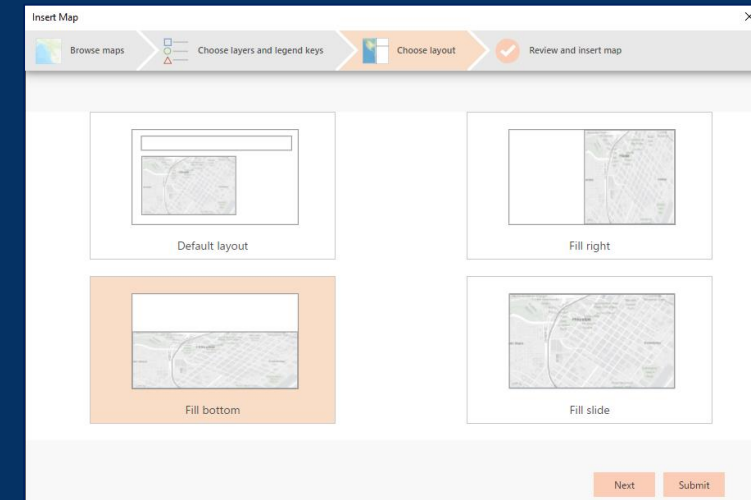
Interactive Maps in PowerPoint



Select map



Configure



Select layout

Supported environments

- Microsoft Office 2013 (32 bit and 64 bit)*
 - Microsoft Office 2016 (32 bit and 64 bit)
 - Microsoft Office 2019 (32 bit and 64 bit)
 - Microsoft Office 365 (on-premises*)
-
- ArcGIS Online current version
 - ArcGIS Enterprise 10.3 and later



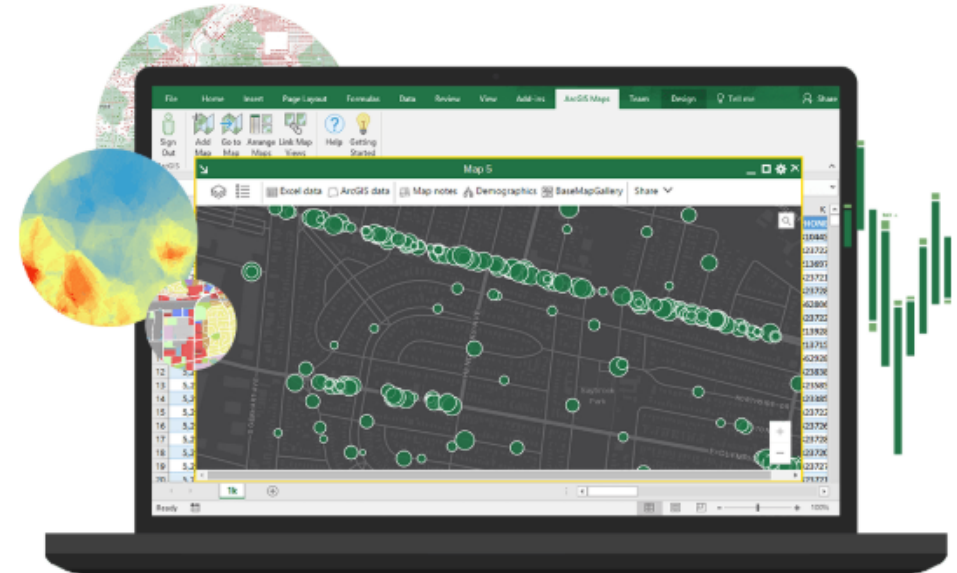
Resources

- ArcGIS Maps for Office
 - Add-in that brings ArcGIS into Microsoft Excel and PowerPoint
 - Leverage “simple” mapping and analysis in familiar UX
- [Product Page](#)
- [Help documentation](#)
- [Product Overview StoryMap](#)
- [ArcGIS Learn Path: ArcGIS Maps for Office](#)
- [GeoNet discussion forum](#)



ArcGIS Maps for Office

Interactive maps in your spreadsheets and presentations



Spreadsheets and graphs bring data to life. Now, you can use interactive maps to see data from another perspective. ArcGIS Maps for Office puts Microsoft Excel data in context of location. You will see patterns and relationships to better understand a situation and make smarter decisions. Then, use Microsoft PowerPoint to share the results.

Join GeoNet Community - Connect, Collaborate and Share

Experiences of customers, partners, Esri staff, and other GIS and geospatial professionals


GeoNet
The Esri Community

<https://community.esri.com/>

[Home](#) [My News](#) [Browse GeoNet](#) [Communities](#) [ArcGIS Ideas](#) [GeoNet Resource Hub](#)



ArcGIS for Office

 Search all content

This place



[Home](#) > [All Communities](#) > [Products](#) > ArcGIS for Office

 Options

[Subscribe](#)

All Boards in This Place



ArcGIS for Office Questions

 6915  87



ArcGIS for Office Blog

 82  3

ArcGIS for Office Videos

 33  2

ArcGIS for Office Ideas

 2030  41

Upcoming Esri India Webinars



Fast-track your app, map and data model creation with
ArcGIS Solutions Templates

Dec 22, 2020 | 11 am IST onwards

Register - <https://go.esri.in/arccgis-solutions-templates>

