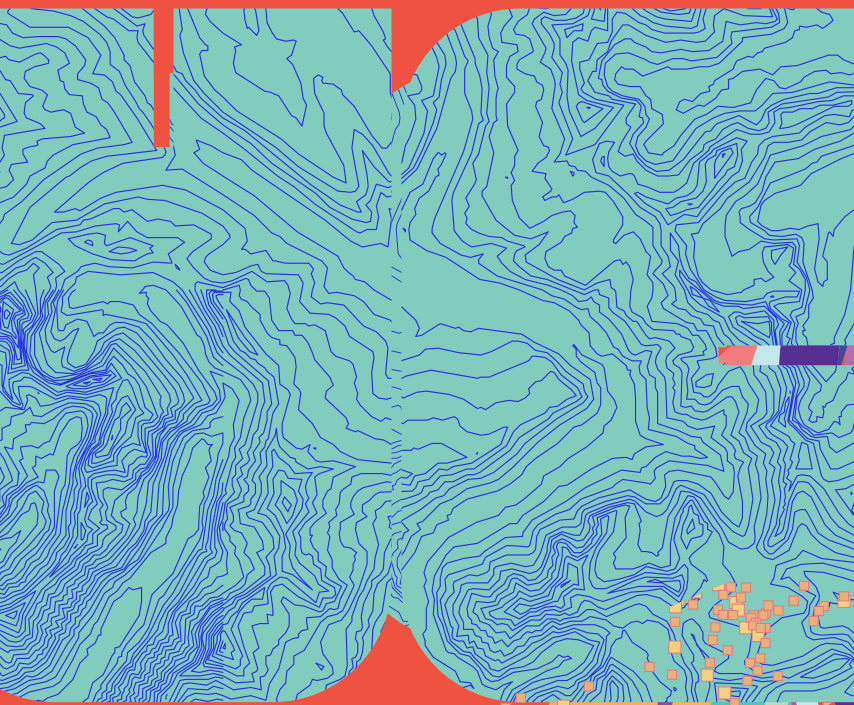




PARTNERSHIP BROCHURE



esri India
THE SCIENCE OF WHERE™

Leader in Geographic Information System (GIS)

CONF
FE

Esri is a global leader in geographic information system (GIS) and location analytics with presence in more than 130 countries worldwide. Esri GIS software is an integral component in nearly every type of organization. Esri has over 350,000 customers (incl. over 5,000 customers in India), serving many verticals including major cities, most national and state governments, more than two-thirds of Fortune 500 companies, and more than 7,000 colleges and universities. Esri applications, running on more than one million desktops and thousands of web and enterprise servers, provide the backbone for the world's mapping and spatial analysis.

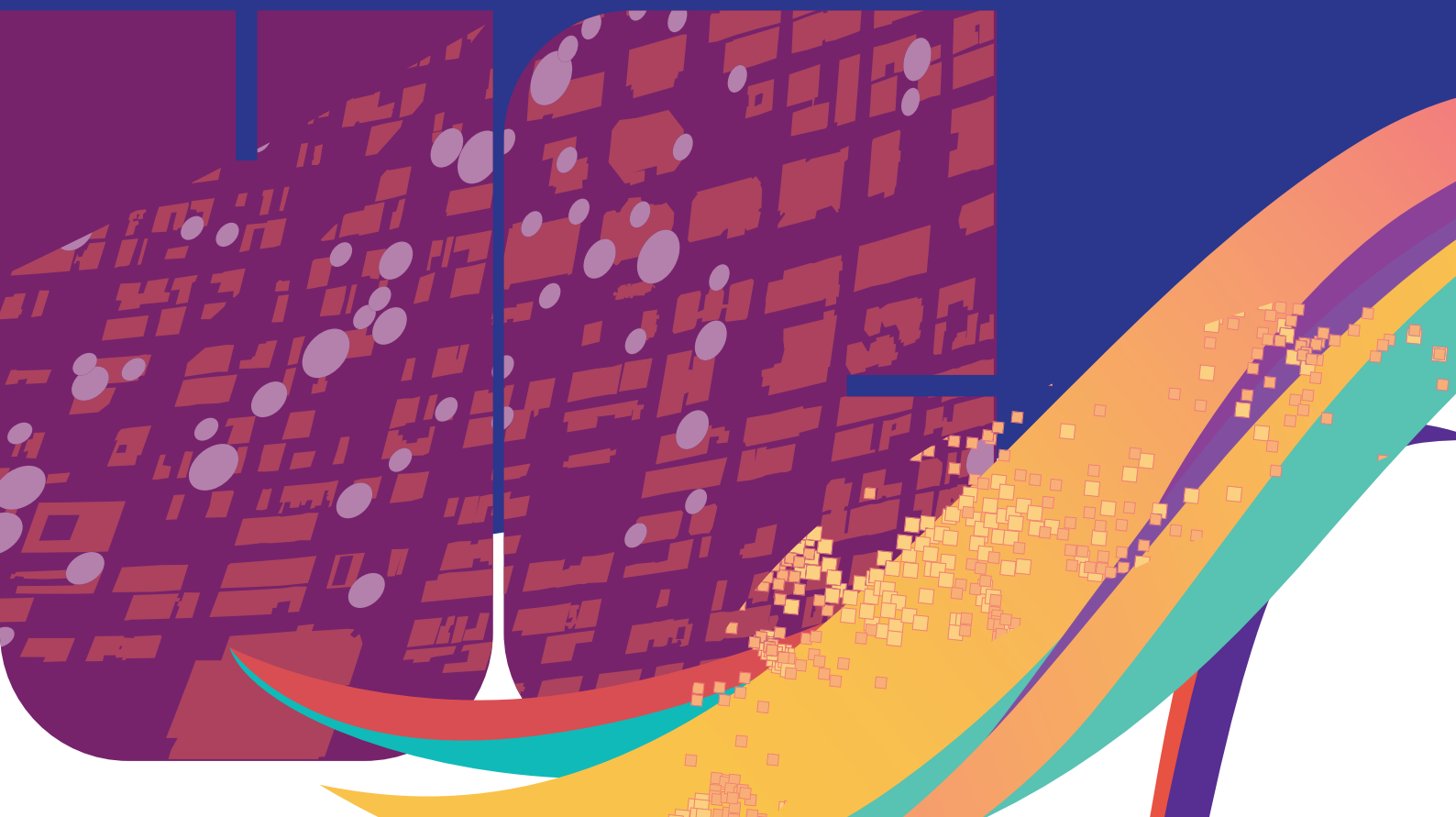
7,000+
Colleges &
Universities

350,000+
Customers
(incl. over 5,000 customers in India)

130+
Countries

2,000+
Partners

Established in 1996, Esri India Technologies Pvt. Ltd. (Esri India) is an end-to-end Geographic Information System (GIS) solutions provider. As a market leader, it has successfully delivered cutting-edge GIS solutions, powered by ArcGIS, to more than 5,000 customers for applications in Land Management, Utilities, Water, Infrastructure, Disaster Management, Telecommunications, Urban Development, Smart Cities, Forestry, Natural Resources Management, and more. For Indian customers, it has engineered a unique product called Indo ArcGIS to solve some of the most pressing social and business challenges the country is facing today. Indo ArcGIS includes 130+ solutions products and more than 600 Indian data layers.





USER CONFERENCE

Esri India User Conference (UC) is where GIS professionals from across the Indian subcontinent and sectors gather to learn, network, and share experiences. Over 20 years, UC has become a platform for decision-makers, policymakers, senior officials, professionals, and technologists to experience the next big thing in GIS and apply them in their organizations and areas of work.

This year, the UC experience is reaching out to two cities in India - Delhi and Kolkata.

As a partner, UC provides innumerable opportunities to position your brand, technologies, and business before top prospects; access to senior decision-makers and a large GIS and developer community from across all segments.

This year's conference schedule is as follows:

User Conference (Delhi)

January 18, 2023

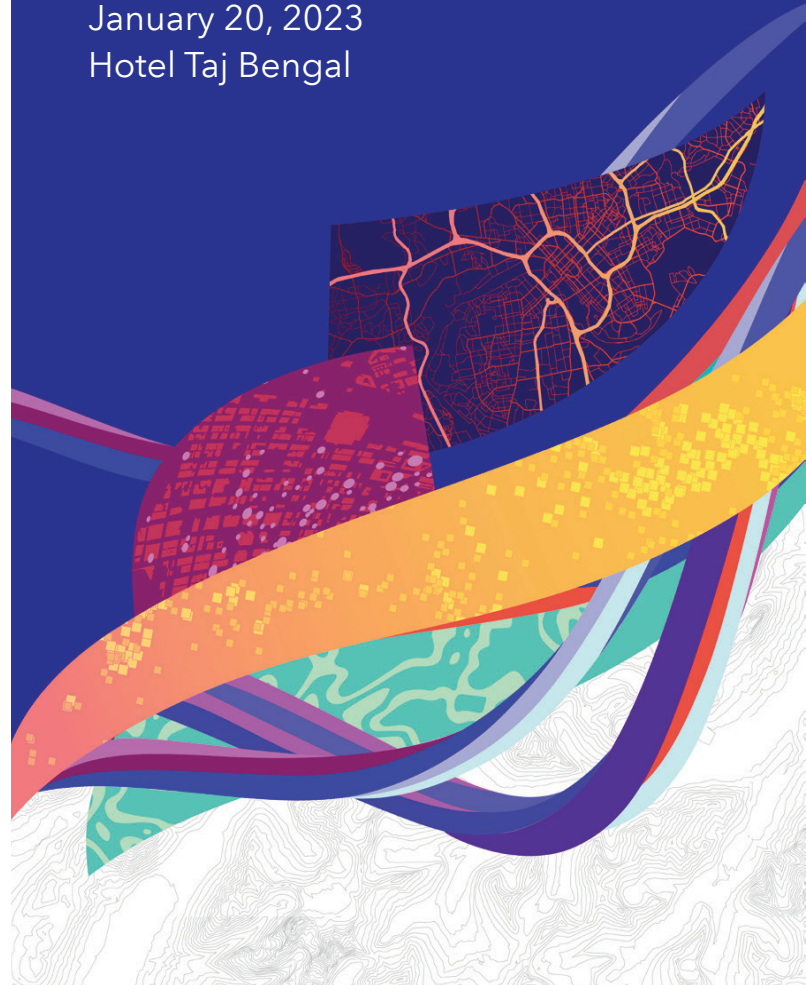
Hotel Pullman New Delhi Aerocity

User Conference (Kolkata)

January 20, 2023

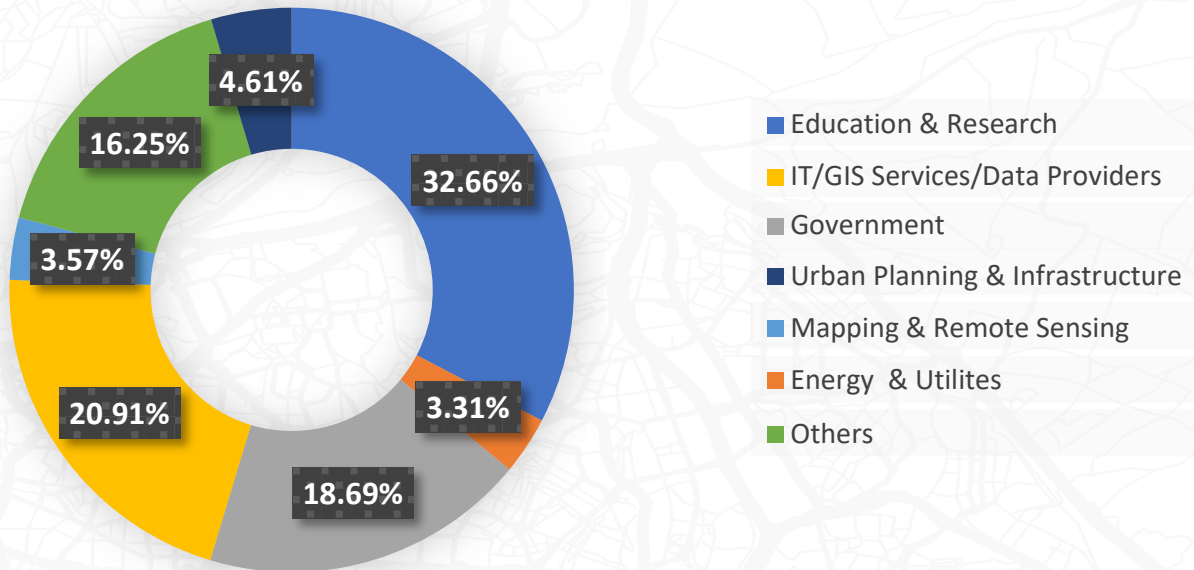
Hotel Taj Bengal

CONFERENCE

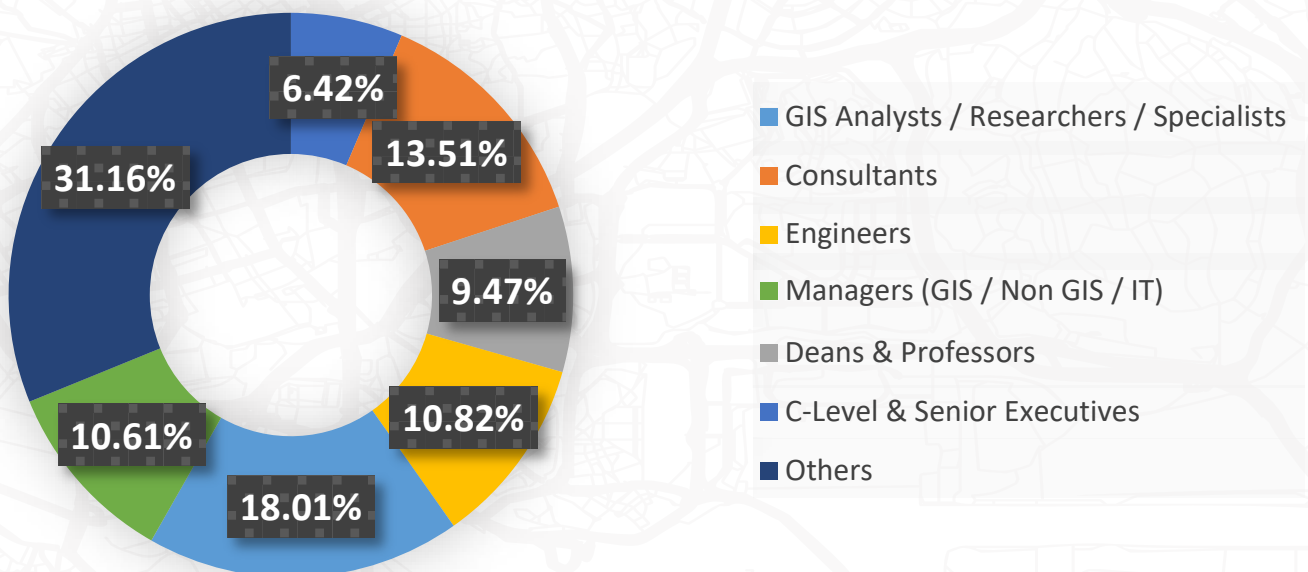


Who Attends Esri India User Conference (virtual)*

Participation by Industry

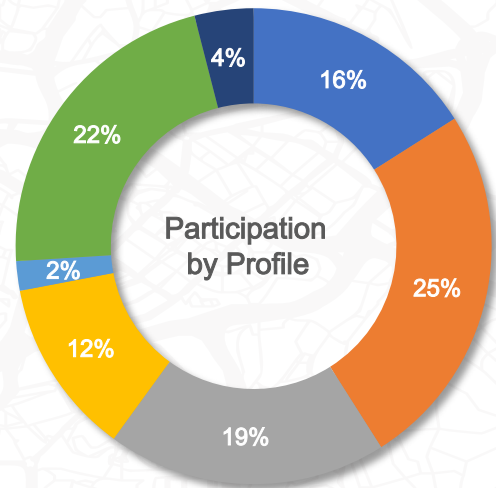
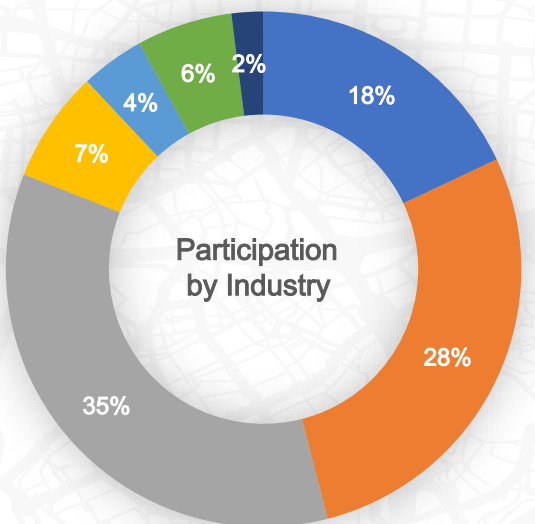
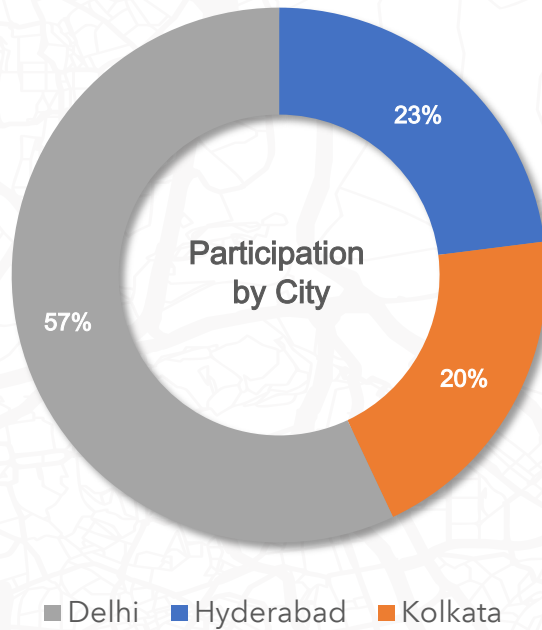


Participation by Profile



*As per data from virtual UC held in July 2021

Who Attends Esri India User Conference (in-person)*



- IT/GIS Services/Data Providers
- Government
- Education & Research
- Urban Planning & Infrastructure
- Energy & Utilities
- Mapping & Remote Sensing
- Others

- Managers (GIS / Non GIS / IT)
- C-Level & Sr. Executives
- Consultants
- GIS Analysts / Researchers / Specialists
- Engineers
- Deans & Professors
- Others

*As per data from in-person UC held in August 2019

Partnership Opportunities

Platinum Partner *(1 Slot)*

- Branding as a platinum partner
- 10 mins speaking slot during the plenary session
- Exhibition pod / space
- Logo feature on partner signages and in promotion across online, e-mail, print advertisements and social channels
- Full page advertisement in the upcoming 2 editions of ArcIndia News
- 1 A4 size delegate kit insert (Collateral inserts to be printed by the partner and provided to Esri India 15 days prior to the event start date)
- 6 complimentary delegate registrations
- 5 complimentary business invites for customers

Delhi+Kolkata: INR 28 lacs, USD 34,000
Delhi: INR 20 lacs, USD 24,000

Gold Partner *(2 Slots)*

- Branding as a gold partner
- 10 mins speaking slot during the technical session
- Exhibition pod / space
- Logo feature on partner signages and in promotion across online, e-mail, print advertisements and social channels
- 1 A4 size delegate kit insert (Collateral inserts to be printed by the partner and provided to Esri India 15 days prior to the event start date)
- Full page advertisement in the upcoming 1 edition of ArcIndia News
- 4 complimentary delegate registrations
- 3 complimentary business invites for customers

Delhi+Kolkata: INR 18 lacs, USD 23,000
Delhi: INR 12 lacs, USD 15,000

Silver Partner *(4 Slots)*

- Branding as a silver partner
- Exhibition pod
- Logo feature on partner signages and in promotion across online, e-mail, print advertisements and social channels
- 1 A4 size delegate kit insert (Collateral inserts to be printed by the partner and provided to Esri India 15 days prior to the event start date)
- 1/2 page advertisement in upcoming 1 issue of ArcIndia News
- 2 complimentary delegate registrations
- 2 complimentary business invites for customers

Delhi+Kolkata: INR 12 lacs, USD 15,000
Delhi: INR 8 lacs, USD 10,000

Lunch Partner *(1 Slot)*

- Branding as a lunch partner
- Logo feature in lunch area and on partner signages
- Video message to be played during breaks (video duration : 2-3 minutes)
- 1 A4 size delegate kit insert (Collateral inserts to be printed by the partner and provided to Esri India 15 days prior to the event start date)
- 3 complimentary delegate registrations

Delhi: INR 8 lacs, USD 10,000
Kolkata: INR 4 Lacs, USD 5,000
Delhi+Kolkata: INR 10 Lacs, USD 12,000

Delegate Kit Sponsor *(1 Slot)*

- Logo feature in delegate kit (Bag, pen, notepad)
- Logo feature in lunch area and on partner signages
- 1 A4 size delegate kit insert (Collateral inserts to be printed by the partner and provided to Esri India 15 days prior to the event start date)
- 2 complimentary delegate registrations

INR 5 lacs, USD 6,000

Exhibition/Associate Partner

- Exhibition pod at the venue
- 2 complimentary delegate registrations

INR 2,00,000, USD 2,500 each pod (each city)



Conference Contacts

Rashmi Gupta

+91 9811102959

rashmi.gupta@esri.in

Dhanraj Bisht

+91 9711520663

dhanraj.bisht@esri.in

Vivek Rawat

+91 9899568956

vivek.1.rawat@esri.in



esri India
THE SCIENCE OF WHERE™

ESRI
CONFERENCE