

SMART POLICING THROUGH **GEO-ENABLEMENT**

Meet the challenges of policing in today's world.



TABLE OF CONTENTS

Introduction	4
Traffic Management on VIP Routes	5
Traffic Management During Tourist Season	6
Accident Analysis and Traffic Management	7
Real-time Dashboard to Track Crime Hotspots	8
Mobilize Agencies and Citizens During Disasters	9
Real-time Field Reporting During Tactical Operations	10
Carry Out Anti-Narcotics Intelligence Operations	11
Carry Out Anti-Naxalite Intelligence Operations	12
Monitor and Prevent Illegal Immigration	13
Carry Out Anti-Terrorist Intelligence Operations	14
Monitor Criminals and Track Incidents of Crime	15
Women Safety and Security	16
About Esri India	18

INTRODUCTION

In today's environment, police need the latest technology to implement modern crime control strategies, better engage the community, and make the most of limited resources.

Maps and spatial analysis have long helped police understand where and when crime is occurring so that they can deploy resources more effectively. But today's location-based technology is doing much more. Esri's ArcGIS is a complete geographic information system (GIS) software that powers maps and apps to help Police Departments support executive decision-making, manage field operations, power real-time situational awareness, and drive community engagement efforts.

Esri India is ready to help your forces meet these new challenges with modern GIS technology that supports missions today, with the flexibility to meet challenges that may come tomorrow.

TRAFFIC MANAGEMENT ON **VIP ROUTES**



CHALLENGE

Traffic congestion is already a formidable challenge for Indian cities. During VIP movement, this is further amplified as roadblocks and route diversions result in traffic jams, causing inconvenience to commuters for prolonged durations.

SOLUTION

A GIS-based traffic management system is an effective way to ensure seamless traffic flow. Esri's ArcGIS provides city traffic departments with enhanced visualizations of road networks, real-time traffic data, and potential congestion hotspots. This helps them in scheduled or unscheduled VIP route planning without disrupting the commute of its citizens.

TRAFFIC MANAGEMENT DURING TOURIST SEASON



CHALLENGE

Due to India's vast cultural diversity, festivals and traditions run all year round. As a result, lakhs of pilgrims and domestic tourists flock to different parts of the country. This leads to traffic congestion and blockades, causing inconvenience to local city commuters as well as visiting pilgrims and tourists.

SOLUTION

Esri's ArcGIS offers an effective solution for event management. It provides a decision-supporting tool for sustainable tourism planning, impact assessment, evacuation planning during emergencies, traffic flow and parking management, and much more. Deploying a GIS-based solution enables authorities to better manage a surge in tourist traffic.

ACCIDENT ANALYSIS AND TRAFFIC MANAGEMENT



CHALLENGE

Rising road accidents and fatalities have been a constant cause for concern for authorities in India. Overspeeding, jumping traffic signals, driving on the wrong side of the road, failing to follow traffic rules & regulations, are some of the major violations on Indian roads that lead to increasing road mishaps.

SOLUTION

A GIS-based system for accident analysis and traffic management enables road safety authorities to visualize and analyze accident data, identify accident-prone locations and safety deficient areas. Esri's ArcGIS seamlessly integrates with ITMS (Integrated Traffic Management System), CCTVs, and Drones to provide necessary insights for implementing road and traffic safety measures.

REAL-TIME DASHBOARD TO TRACK CRIME HOTSPOTS



CHALLENGE

Crimes like chain snatching, break-ins, thefts, and burglary continue to plague the length and breadth of the country. In addition, safety at home and on the road has become a serious point of concern for the residents as well as the local police.

SOLUTION

A GIS-based real-time dashboard helps in tracking crimes and identifying the major crime hotspots in the city. Esri's ArcGIS enables law & order authorities and police departments to monitor crimes in real-time, conduct crime analyses, and gain insights from the crime data to take preventive action.

MOBILIZE AGENCIES AND CITIZENS DURING DISASTERS



CHALLENGE

The growing urbanization of hilly or low-lying areas is hampering their ecological balance and topography. As a result, they are witnessing an increasing number of natural calamities, such as landslides and flooding, thereby endangering lives and property.

SOLUTION

Esri's ArcGIS solution provides state police departments with the technology to conduct advanced prediction, response, and restoration during a natural calamity or emergency. Geospatial analysis aids in combatting disaster situations by efficiently mobilizing crowds and carrying out search and rescue operations.

REAL-TIME FIELD REPORTING DURING TACTICAL OPERATIONS



CHALLENGE

In today's volatile and uncertain times, there is a constant threat of an untoward incident taking place and escalating quickly. In such a situation, on-ground intelligence through real-time communication between the control room and field agents becomes imperative to take swift action and diffuse the situation.

SOLUTION

Esri's ArcGIS provides a GIS-based mobile solution that enables real-time field reporting and critical data updates during tactical operations. The on-duty field officer alerts the relevant authorities with critical inputs via the mobile application. This helps authorities in identifying and assessing the situation to plan operations with higher efficacy while minimizing threat.

CARRY OUT **ANTI-NARCOTICS** INTELLIGENCE OPERATIONS



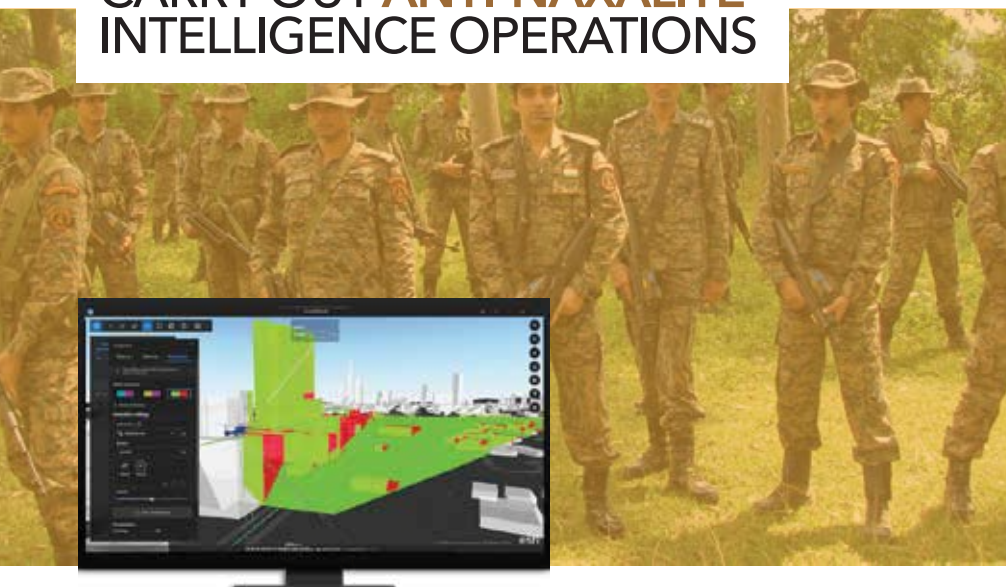
CHALLENGE

Advancement in technology has brought with it the added challenges of drug traffickers evading anti-narcotics departments. As peddlers are leveraging technology to buy, sell, and transport drugs, departments are finding it increasingly demanding to monitor, trace, and combat drug trafficking operations.

SOLUTION

To support the vision of a drug free India (Nasha Mukht Bharat Abhiyaan), a GIS-based system can provide the tools for anti-narcotics departments to curb drug trafficking and abuse. Esri's ArcGIS helps identify hotspots, monitor trade routes, and share intelligence between informers, field officers, and command centres.

CARRY OUT **ANTI-NAXALITE** INTELLIGENCE OPERATIONS



CHALLENGE

Certain parts of the country are home to reports of crime and violence carried out by Naxal groups. Incidents involving the death of security personnel pose a serious threat to the overall security of the region. These repetitive setbacks are likely due to non-availability of AI/ML-based predictive intelligence solutions.

SOLUTION

Esri's ArcGIS offers an integrated solution for ANO command centres and field officers to curtail this menace in Naxalite affected areas. A GIS-based system with AI/ML-powered analytical capabilities can help security forces monitor Naxal movements using satellite imagery and drones, as well as share mission-critical details with ground forces.

MONITOR AND PREVENT ILLEGAL IMMIGRATION



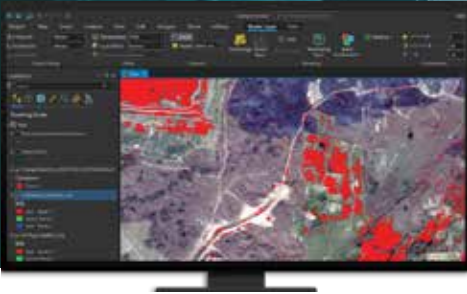
CHALLENGE

One of the most volatile and contentious issues faced by India today is the illegal migration that happens due to infiltration at international borders. This is a direct and indirect threat to national security and law & order in the country. Any delay in addressing this problem will only make matters worse.

SOLUTION

Timely on-ground intelligence is imperative to monitor and prevent illegal immigration, border crimes. Esri's ArcGIS solution does this by leveraging geospatial data and real-time intelligence. It provides forces access to relevant information at the right time to act swiftly and support better deployment of resources during verification drives.

CARRY OUT ANTI-TERRORIST INTELLIGENCE OPERATIONS

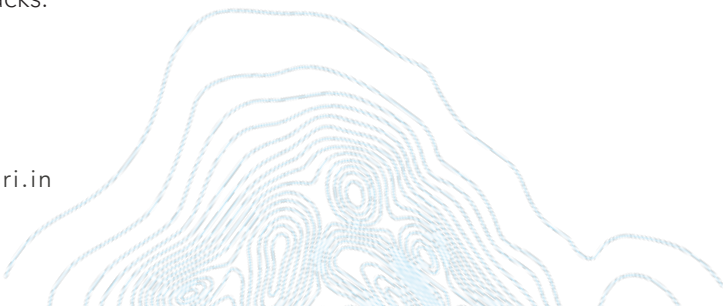


CHALLENGE

The threat posed by terrorism remains a serious challenge to national security and the safety of our citizens. In India, the internal security and law & order situation is constantly challenged by various terrorist groups-led crime and violence.

SOLUTION

Esri's ArcGIS provides GIS-powered, AI-enabled predictive analysis for CI/CT operations based on actionable information collected from structured, semi-structured, unstructured, and sensor data. This enables the Special Task Force/ATS and Intelligence Departments be better prepared to combat terrorist groups-led attacks.



MONITOR CRIMINALS AND TRACK INCIDENTS OF CRIME



CHALLENGE

An increasing number of crimes are being reported from interstate borders, such as car theft, smuggling, human trafficking. Considering the limited security personnel deployed at state borders, there is a need for a technology-based solution to effectively track and alert authorities of interstate crimes.

SOLUTION

A GIS-based system can provide location intelligence to monitor interstate criminals to mitigate incidents of crime. Further, Esri's ArcGIS solution facilitates state police departments to analyze trends and patterns in crime data to predict occurrence of criminal incidents, enabling them to take appropriate and timely preventive action.

WOMEN SAFETY AND SECURITY



CHALLENGE

As the second most populous country in the world, India has had growing challenges in combatting crimes against women. While adequate laws are in place, there is a need for innovative and strict on-ground implementation of security measures to protect the female population.

SOLUTION

To enhance women safety in India, Esri's ArcGIS provides location-based solutions for state police departments. These include analyzing crime data, tracking known offenders, mapping eve teasing hotspots, identifying safer routes for women based on factors such as lighting, proximity to emergency services, presence of CCTV cameras, and more.



MAXIMIZE THE POWER OF **GIS**
AND **LOCATION INTELLIGENCE**
IN FACILITATING **SMART POLICING**



Scan to know more

ABOUT ESRI INDIA

Established in 1996, Esri India Technologies Pvt. Ltd. (Esri India) is an end-to-end Geographic Information System (GIS) solutions provider. As a market leader, it has successfully delivered cutting-edge GIS solutions, powered by ArcGIS, to more than 6,000 customers for applications in Land management, Utilities, Water, Infrastructure, Disaster Management, Telecommunications, Urban Development, Smart Cities, Forestry, Natural Resources Management, and more. For Indian customers, it has engineered a unique product called Indo ArcGIS.

Headquartered in Noida (Delhi-NCR), the company not only enjoys association with more than 6 lakh users across the country but has also got Great Place to Work® Certified in 2021 and 2022.

Know more about Esri India at [esri.in](https://www.esri.in).





Esri India Technologies Private Limited

10th Floor, Max Towers, Sector - 16B, Noida - 201301, Uttar Pradesh (India)

Toll Free No. 1800-102-1918 | Email: info@esri.in | Web: esri.in