



# Odisha Primary Education Program Authority uses GIS to improve school education delivery

## Client

Odisha Primary Education Program Authority (OPEPA)

## Website

[www.opepa.in](http://www.opepa.in)

## Location

Bhubaneswar, Odisha

## Industry

Education

## Organization Profile

Odisha Primary Education Program Authority (OPEPA) came in to existence as a registered society in January, 1996 under the aegis of the School & Mass Education (S&ME) department of the Government of Odisha. OPEPA implements the flagship program of Sarv Shiksha Abhiyan across the entire state, touching children studying in about 80,000 educational institutes.

## Solution

ArcGIS Server and ArcGIS Desktop

## Highlights

Esri India helped OPEPA by:

- Improving visibility into the effectiveness of the program including planning and utilization of resources
- Generating reports that provided information required for ensuring compliance with the RTE Act and to fulfil the planning, implementation and monitoring of the state level initiatives commissioned by the authority

## Project Summary

Sarva Shiksha Abhiyan (SSA) is a program launched by the Government of India which is aimed at the universalization of elementary education across the country. It is being implemented in partnership with all state governments. The OPEPA is the nodal authority for delivering primary education to a network of over 80,000 schools in the state of Odisha. OPEPA has a comprehensive data bank of the schooling system in the state, acquired over years (along with the latitude and longitude for each school) through a sustained implementation of the District Information System for Education (DISE), and the nationally acclaimed eShishu project. This comprehensive MIS framework enables OPEPA to monitor the delivery mechanisms for the SSA in Odisha.

OPEPA however needed to identify areas of the state where service delivery of the SSA was not conforming with prescribed government standards. This, it was felt, would enable pre-emptive and corrective actions to be prioritized and planned.

OPEPA implemented GIS solutions based on technology from Esri that enabled it to assess the progress of the program.

## Challenges

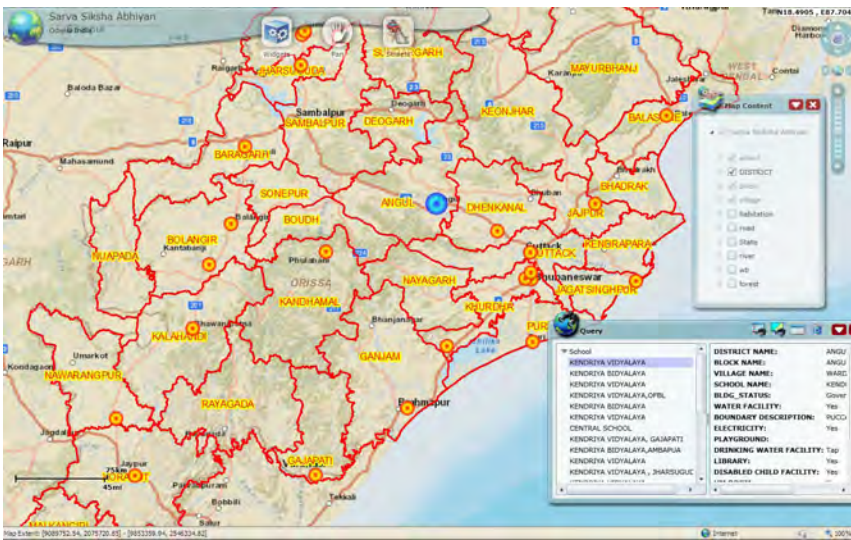
OPEPA was finding it difficult to:

- Accurately analyze and report the reach and quality of the education delivered to the children enrolled in the schools within this network
- Efficiently plan, implement and monitor the distribution of resources at its disposal within local areas in compliance with the Right to Education (RTE) Act

## Solution

What OPEPA required was a web-based GIS solution that integrated with its existing MIS platform and enabled it to:

- Visually analyze the MIS data in a geospatial context
- Perform an impact analysis of its operations on the ground
- Accurately monitor and report the delivery of education in the schools within its network



## Customer speak

“ A GIS-enabled solution by Esri India has dramatically improved our visibility into the efforts towards driving the education initiatives in our state. ”

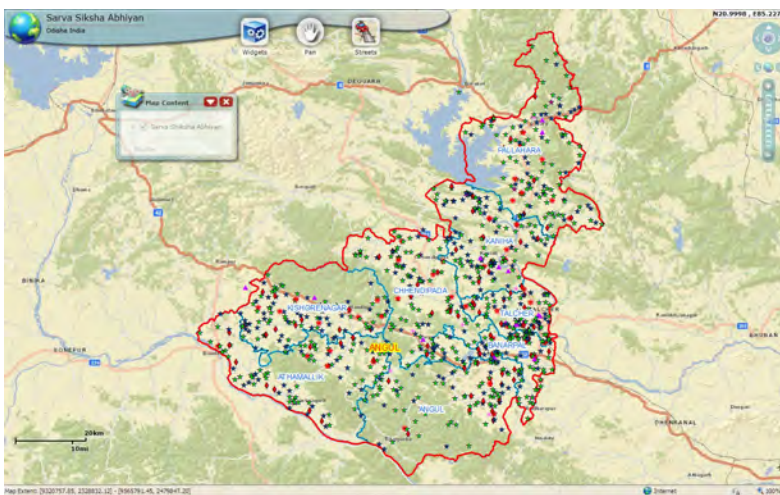
-Krishna Gopal Mohapatra  
State Project Director, OPEPA

OPEPA chose a web-based GIS solution that was powered by Esri’s ArcGIS Server and ArcGIS Desktop software.

Based on the Esri platform, OPEPA created GIS applications for the Assets and Facility Mapping of all primary schools of Odisha, apps for Roads, Rivers, and Forest boundary layers that were superimposed on school layers. Geo-tagging of a school’s photographs was undertaken for monitoring. The GIS solution was linked with the Child Tracking System and District Information System for Education.

Tools meanwhile, were created to handle queries such as:

- Shortest distance between two schools
- Inspection route chart of primary schools
- Analysis on ‘where to sanction schools’



## Benefits

The solution:

- Improved visibility into the effectiveness of the SSA program including planning and utilization of resources
- Generated reports providing information required for ensuring compliance with the RTE Act and to fulfil the planning, implementation and monitoring of the state level initiatives commissioned by the authority