



Integrating field operations for an efficient city gas network

Dr. Pradeep N
and
Mitika Garg

WHO
WE ARE



esri®

THE
SCIENCE
OF
WHERE™

Esri builds the
most powerful mapping
and spatial analytics
products **in the world.**

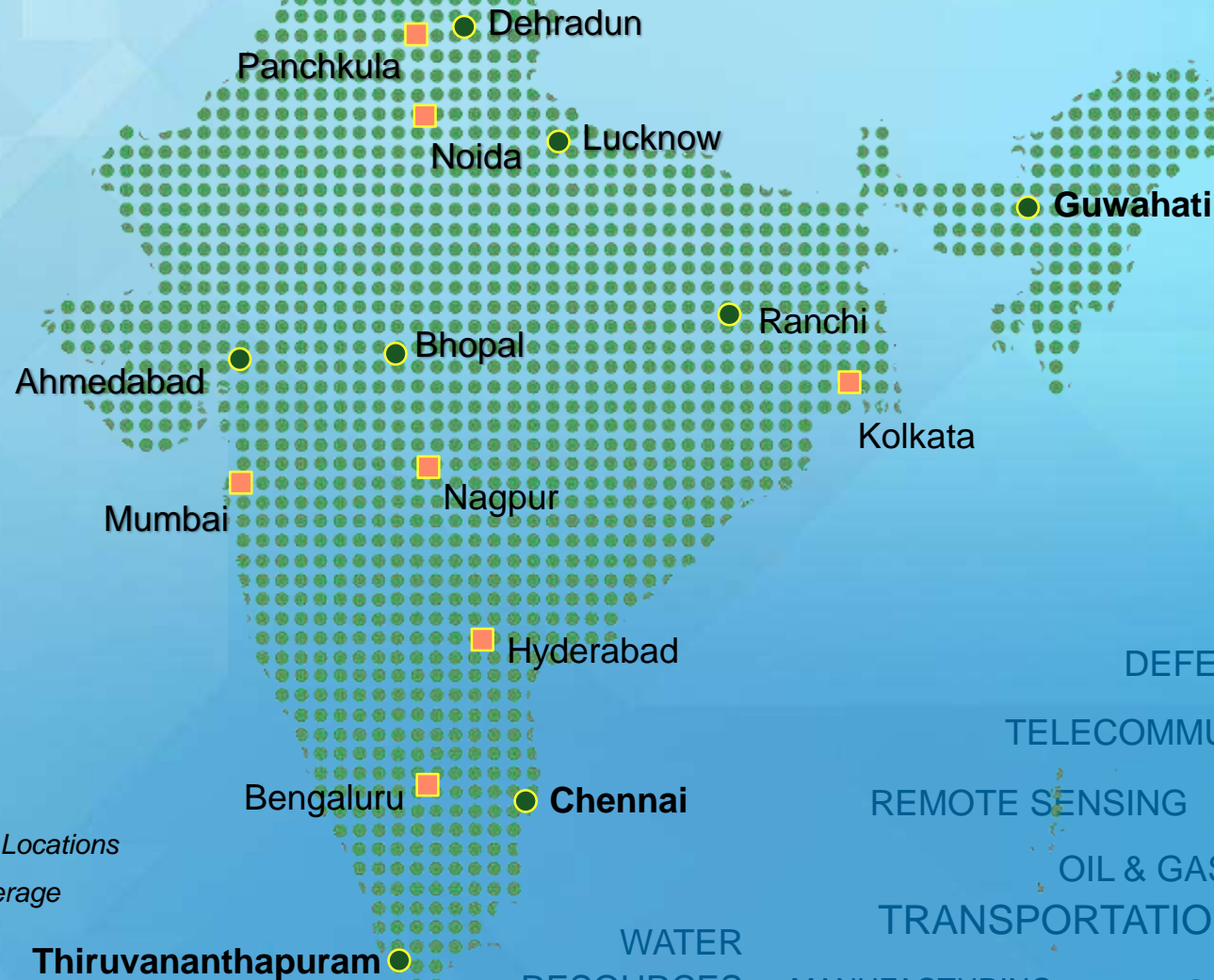
"Esri's data-rich maps are the secret weapon
behind many of today's most successful brands."

- Fast Company

With more than 100 offices
around the world and
professionals from 67 countries,
Esri provides organizations of
every size and industry the tools
to get deeper insights from their
geographic and dynamic data
and improve operational and
business results.

esri

Our India Presence



Presence since
year **1996**

5000+ Customers
spanning
multiple industries

E-GOVERNANCE

DISASTER
MANAGEMENT

DEFENSE/SECURITY

INSURANCE

TELECOMMUNICATIONS

WATER

URBAN PLANNING

REMOTE SENSING

BANKING

INFRASTRUCTURE

LAND RECORDS

OIL & GAS

NATURAL
RESOURCES

EDUCATION

AGRICULTURE

TRANSPORTATION

ENVIRONMENT

WATER
RESOURCES

MANUFACTURING

ENERGY/POWER

HUMAN HEALTH

and many more...

Thiruvananthapuram

Esri India Office Locations

Direct sales coverage

ArcGIS for Utilities | A Complete GIS



"Having the GIS enterprise approach actually makes me sleep a little better at night. We're not scrambling to chase down information. It is networked, it is mobile, and we can get access to it."

—Jimmie Cho
Chief Operating Officer, SoCalGas

*Creates real business
value...
...across the utility enterprise*

ArcGIS for Utilities | A Complete GIS

Enabling Real-Time Sharing and Collaboration . . .
. . . Across the Organization



A Complete Network Management System . . .

Enterprise City Gas Business Systems

Provides Location Context

Common & Central Data

Business Integrating

Spatial/Location Analytics



Scalable and Ease of Deployment

New Apps
& Dashboard



View of Operations



Interactive Widgets



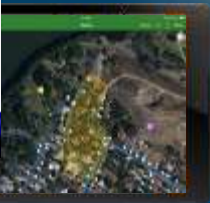
Integration with
GNSS receivers

Mobile App

Collector



Explorer

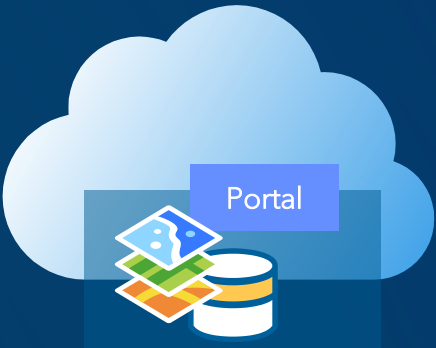


Markup



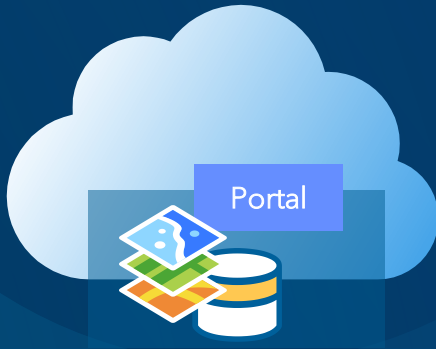
Survey123
Photo Markup

Distributed
Collaboration



Cloud

Internal or
External
Communitie
s



Enterprise
Network

ArcGIS Field Apps

- Complete suite of apps to support field operations workflows



Workforce
for ArcGIS



Navigator
for ArcGIS



Explorer
for ArcGIS



Collector
for ArcGIS



Survey123
for ArcGIS



ArcGIS
QuickCapture



Tracker
for ArcGIS

** Collector for ArcGIS ,Survey123,Explorer for Arcgis , Arcgis QuickCapture & Workforce for Arcgis- Bundled with Enterprise*

***Tracker for ArcGIS and Navigator for ArcGIS : Premium Apps - Add on license*

Field Operations | Location-enable all phases of field work



Network Inspection and Redlining

Redlining

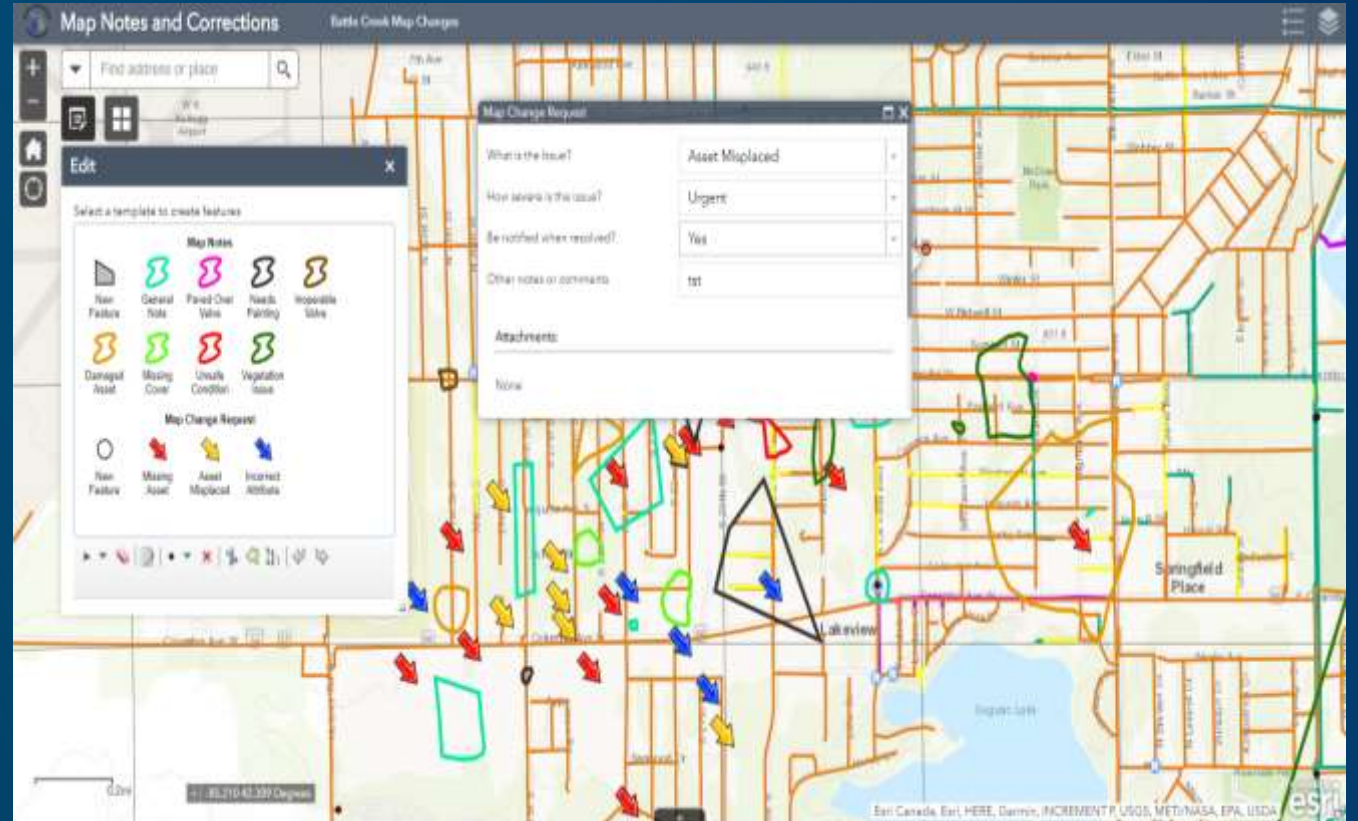
Vegetation issues

Change in network

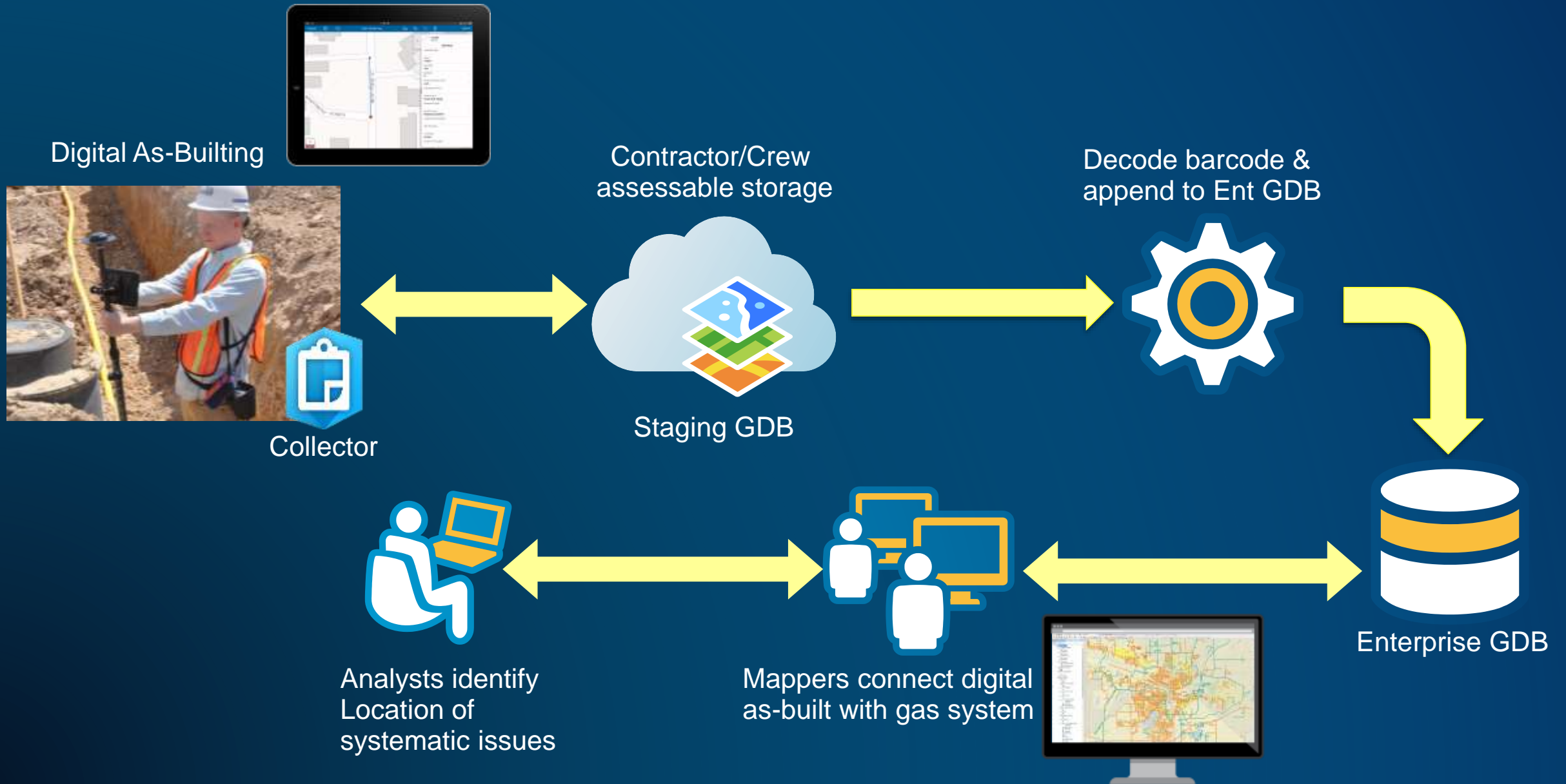
Attributes changes

Missing Assets

Faster updates



Applying the ArcGIS Platform to Tracking and Traceability



Apps for Monitoring Operations



Strategic



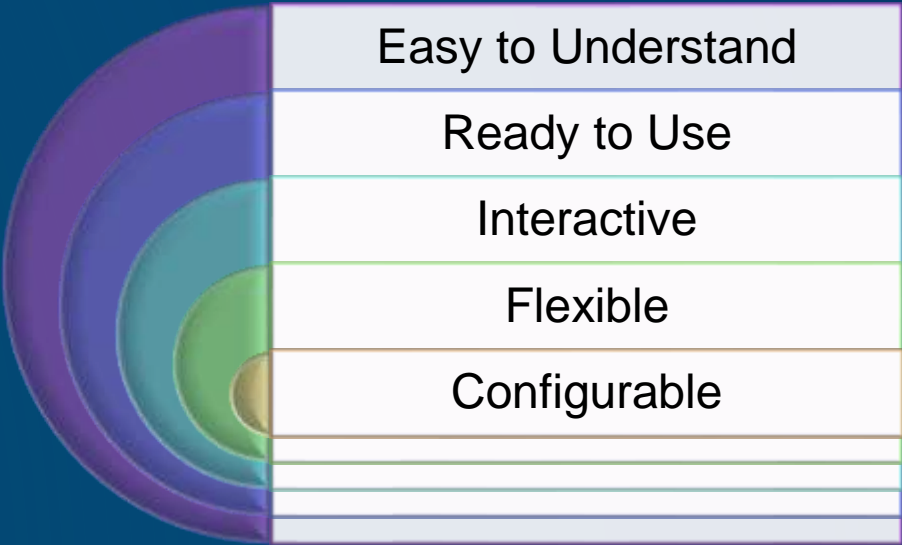
Tactical



Informational



Operational



Easy to Understand

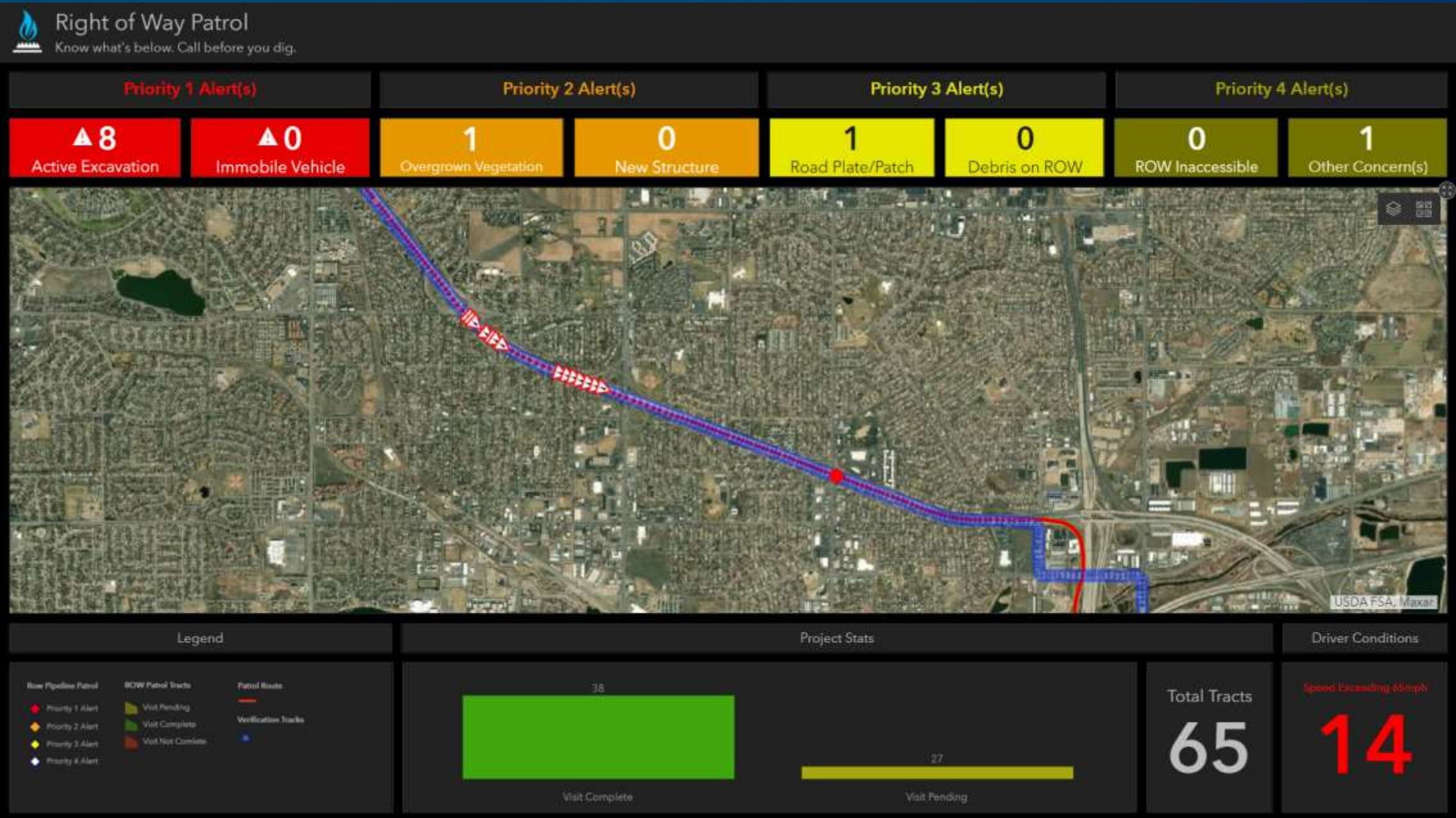
Ready to Use

Interactive

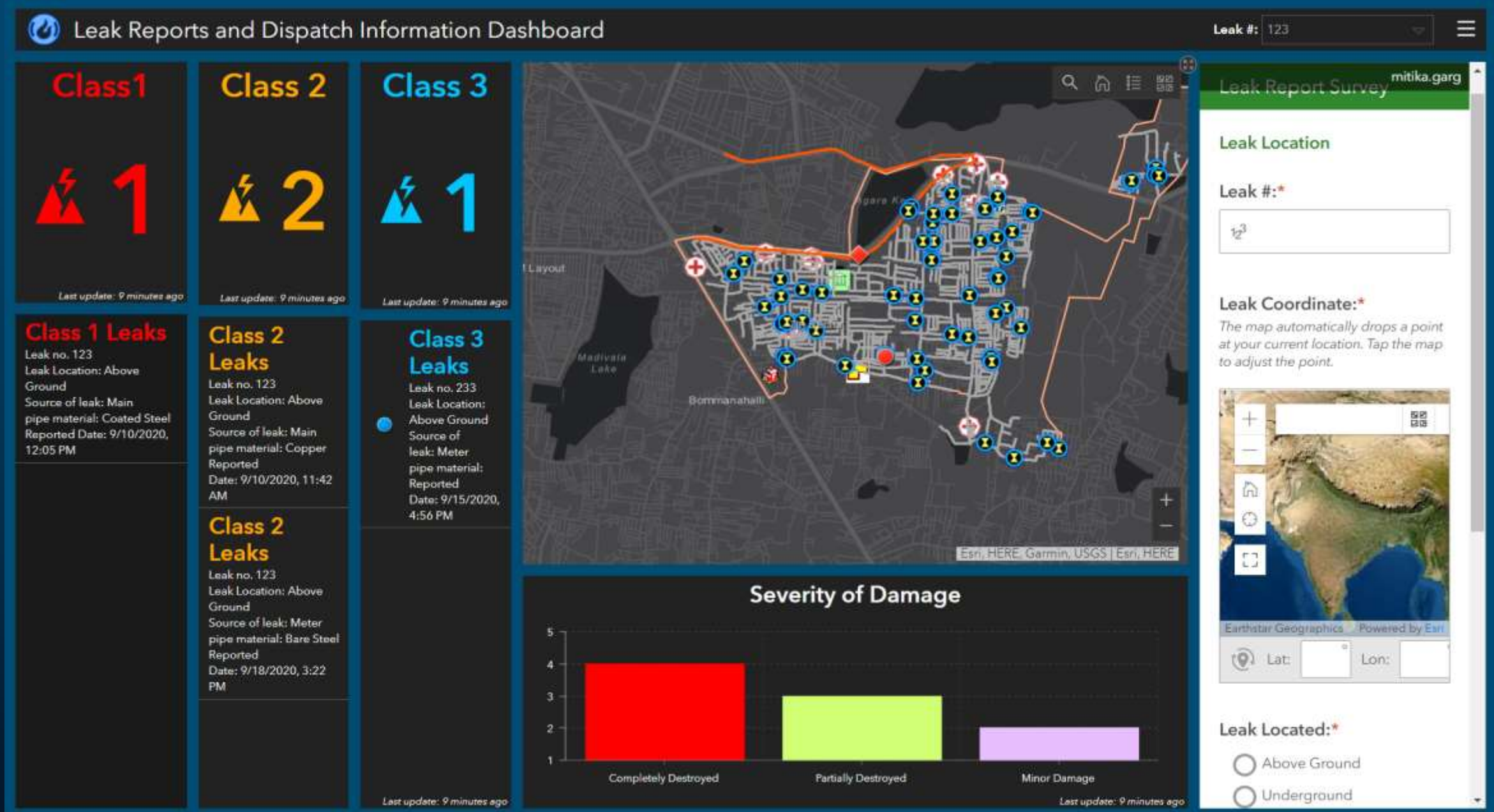
Flexible

Configurable

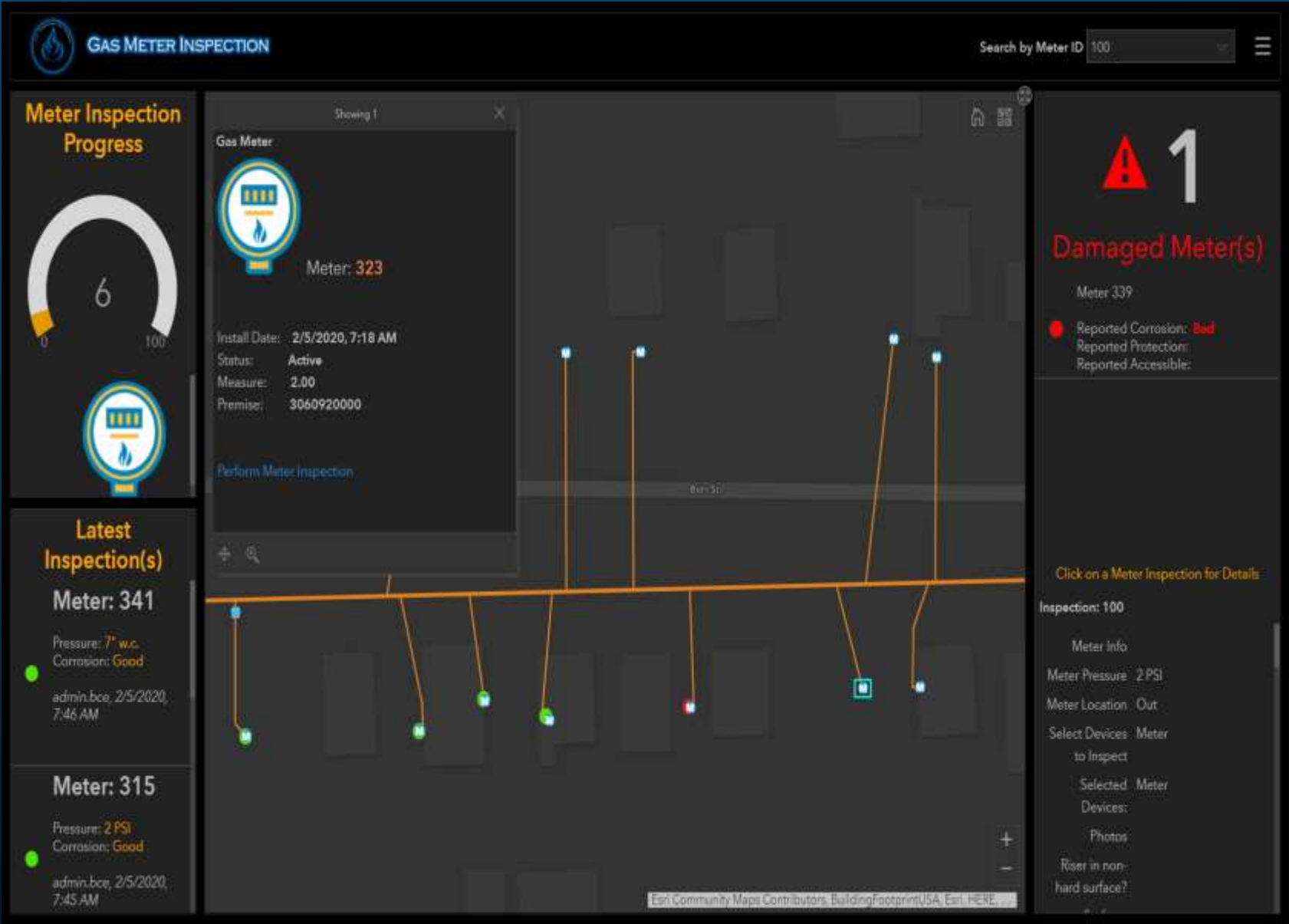
Right of Way Management Dashboards



Field Reporting Survey linked Dashboards



Meter Inspection Dashboard



ArcGIS for Utilities | A Complete GIS

System of Insight



Business Intelligence

Discover patterns & trends

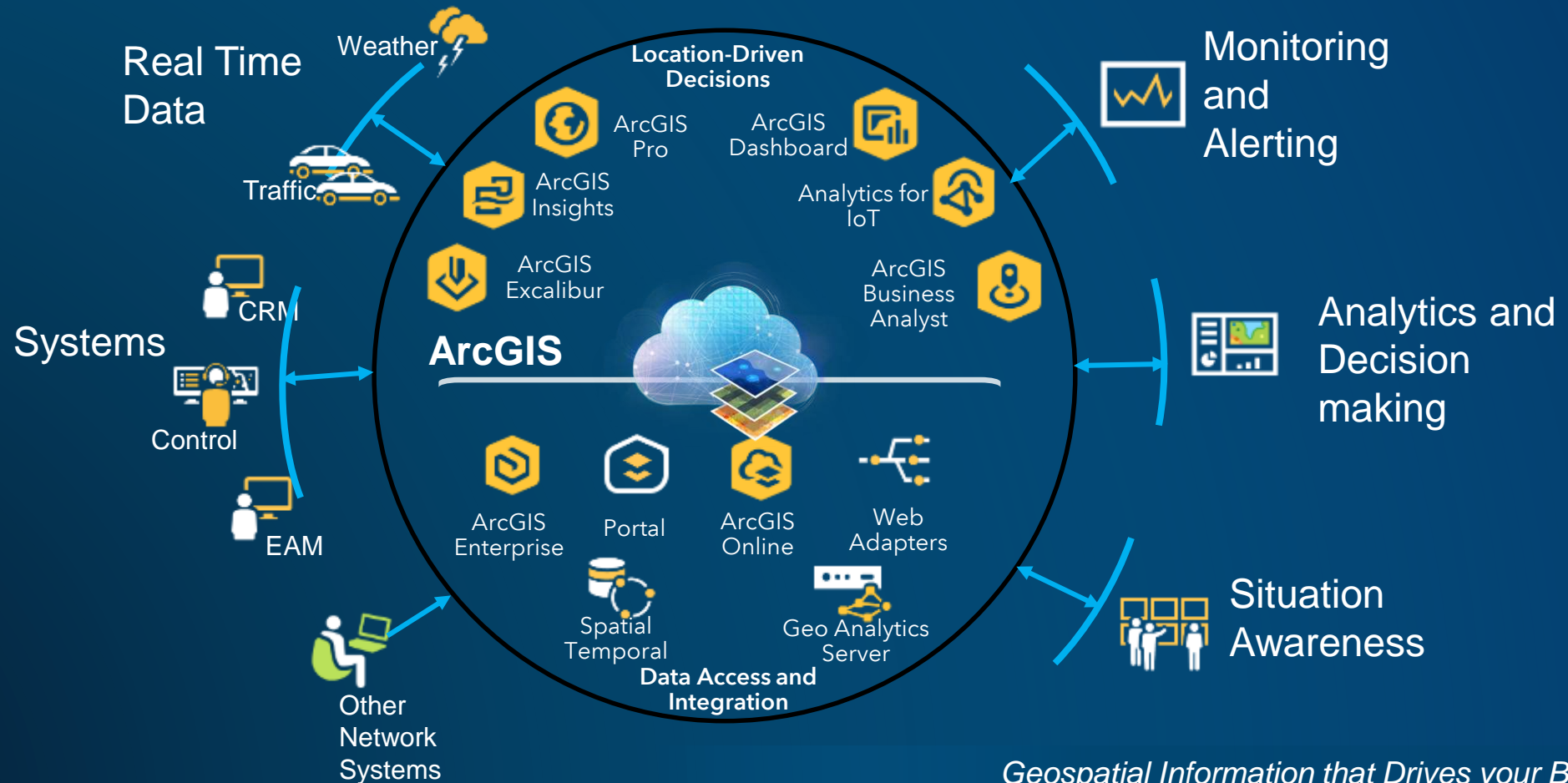
Visualization and Analytics

Real time dashboards

Integrates 3D, AI, AR and ML

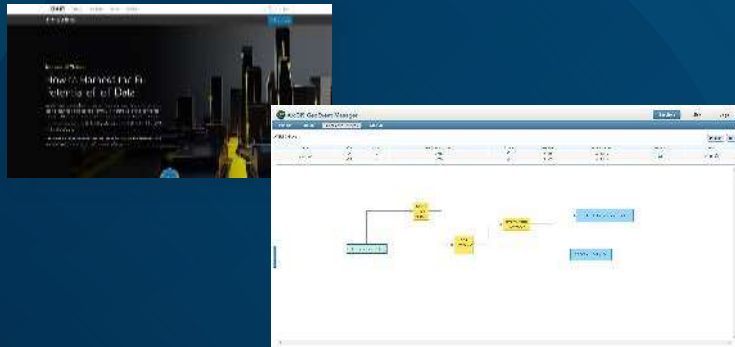
ArcGIS for Utilities | A Complete GIS

System of Insights



System for IoT

Real-Time GIS



GeoEvent
Server

Up to 6,000 events/second
Scalable to multiple
machines

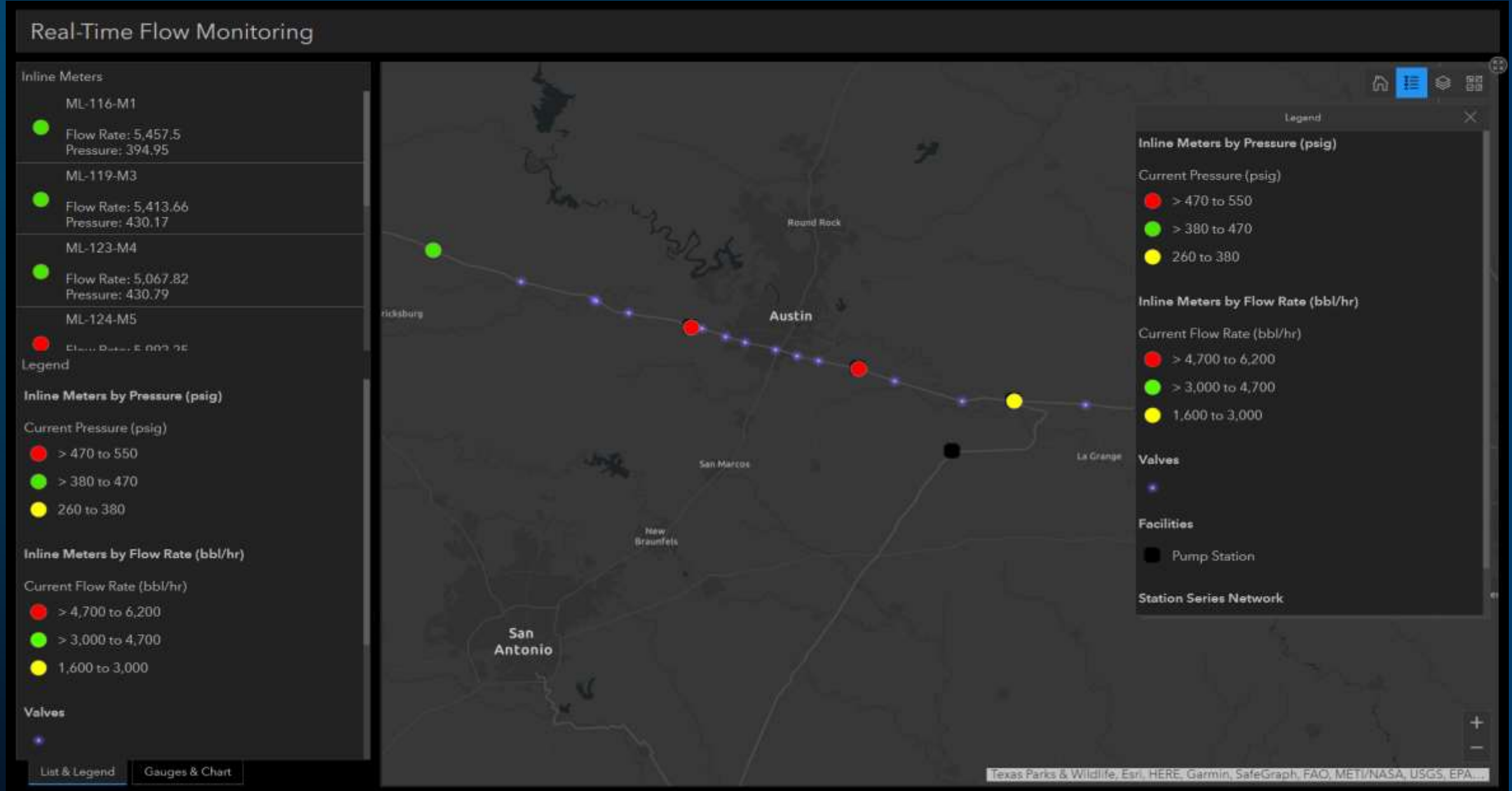
Spatiotemporal Big Data Store



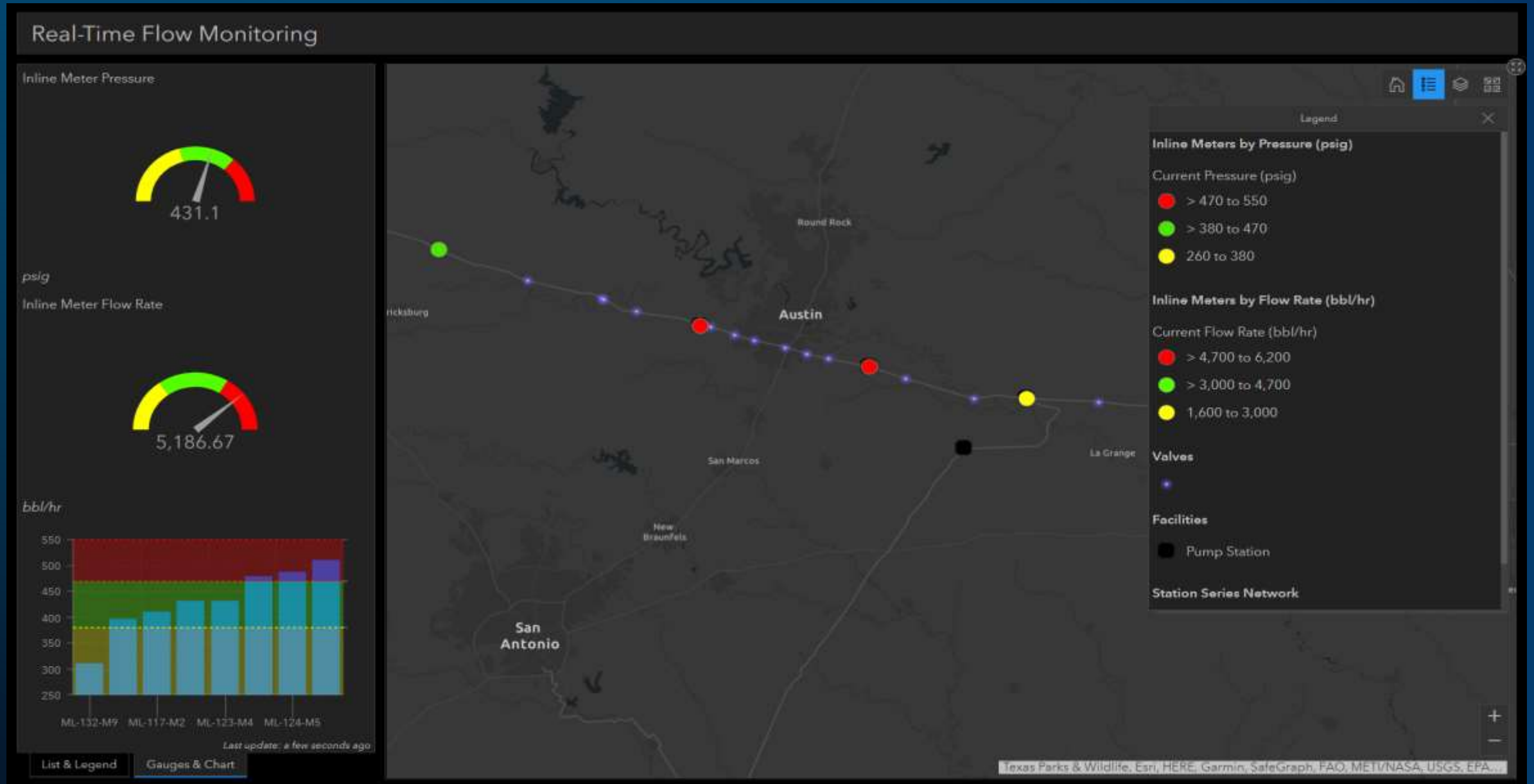
Real-Time
Data

Storage of 3D points
Expanded data retention capabilities

Flow monitoring apps



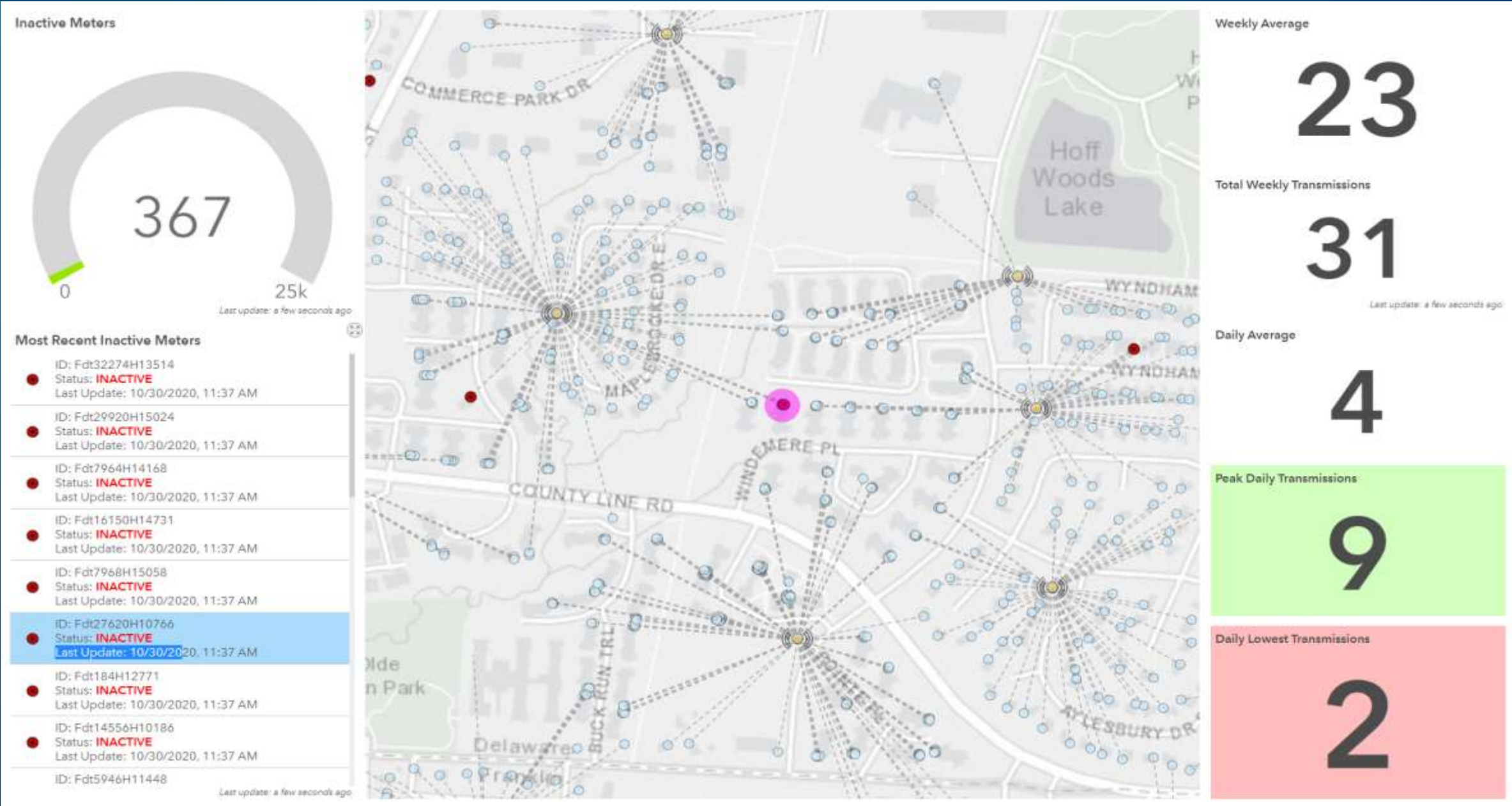
Flow monitoring apps



Leak Management and Field Workforce Management



Smart Meter(AMI/AMR) Integration



Gas Utilities | A Complete GIS

The Geospatial Infrastructure to Solve Utility Challenges

*Digitally
Transforming Utilities*

A Complete GIS

System of Record

System of Engagement

System of Insight

A Complete GIS

System of Record

- Supplies complete data model
- Provides ease of editing
- Expands connectivity capability
- Scales to any utility size

System of Engagement

- Provides worker collaboration
- Consumes external web services
- Integrates all types of data
- Delivers tracking, navigation, exploration and network sharing

System of Insight

- Features real-time BI dashboards
- Includes out-of-the box analysis
- Discovers patterns
- Integrates AI, AR, machine learning and 3D analytics



Join GeoNet Community - Connect, Collaborate and Share experiences

Community of customers, partners, Esri staff, and other GIS and geospatial professionals

GeoNet

The Esri Community

Home

My News

Browse GeoNet ▾

Communities ▾

ArcGIS Ideas

GeoNet Resource Hub

1

esri

All Places >

Gas and Pipeline

Overview

Activity

Content

People


Subspaces

Calendar

Follow

Actions ▾

Welcome to the Gas and Pipeline GeoNet Community



This is a place to ask questions, read and post blogs and find content about Gas and Pipeline. To get started, watch the video below to learn more about engaging the GeoNet Community. And for comments, questions, and feedback on this space, please post them here: [GeoNet Feedback](#)

Browse Content

Read Blog

Start Discussion

MOST RECENT UPDATES

UPDM 2019 Edition

Can I migrate geometric network data to UPDM(2019) without linear referencing?

New eBook on Operations Management

ASK THE COMMUNITY

Search for content or ask a question

Ask my question

RELATED GEONET PLACES

Electric

UNANSWERED QUESTIONS



esri™ India

THE SCIENCE OF WHERE™

Write to us at info@esri.in

or

visit esri.in