



Configuring an enterprise GIS solution to support your City Gas Distribution business

Dr. Pradeep N
and
Mitika Garg

WHO WE ARE



esri®

THE
SCIENCE
OF
WHERE™

Esri builds the
most powerful mapping
and spatial analytics
products **in the world.**

**"Esri's data-rich maps are the secret weapon
behind many of today's most successful brands."**

- Fast Company

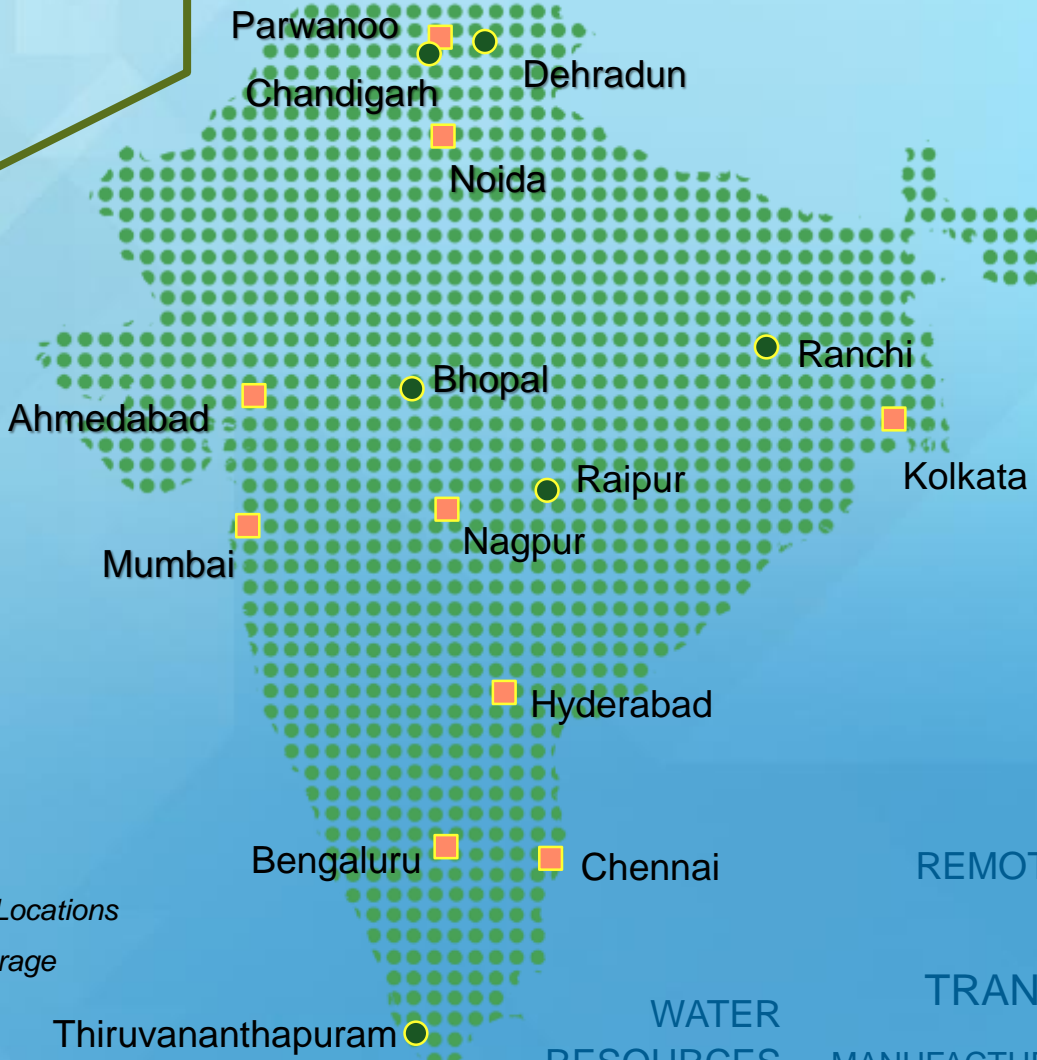
With more than 100 offices
around the world and
professionals from 67 countries,
Esri provides organizations of
every size and industry the tools
to get deeper insights from their
geographic and dynamic data
and improve operational and
business results.

The Esri logo is located in the bottom right corner of the slide. It consists of the word "esri" in a lowercase, sans-serif font, with a registered trademark symbol (®) to its upper right. The background of the slide is a dark map with numerous colorful lines (yellow, red, green, orange) radiating from various points, representing data connections or movement patterns.



Who We Are

Our India Presence



Presence since **1996**
year

5000+ Customers
spanning
multiple industries

Esri India Office Locations
Direct sales coverage

- E-GOVERNANCE
- DEFENSE/SECURITY
- TELECOMMUNICATIONS
- REMOTE SENSING
- OIL & GAS
- TRANSPORTATION
- WATER RESOURCES
- MANUFACTURING
- ENERGY/POWER
- INSURANCE
- WATER
- BANKING
- NATURAL RESOURCES
- ENVIRONMENT
- HUMAN HEALTH
- DISASTER MANAGEMENT
- URBAN PLANNING
- INFRASTRUCTURE
- LAND RECORDS
- EDUCATION
- AGRICULTURE
- and many more...

ArcGIS for Utilities | A Complete GIS



"Having the GIS enterprise approach actually makes me sleep a little better at night. We're not scrambling to chase down information. It is networked, it is mobile, and we can get access to it."

—Jimmie Cho
Chief Operating Officer, SoCalGas

*Creates real business
value...
...across the utility enterprise*

ArcGIS for Utilities | A Complete GIS

System of Engagement



Enterprise collaboration

Empowers Work force

Integrates all types of data

Tracking and Navigation

Real time communication

Manages and promotes user collaboration and interaction...

Enterprise Systems Characteristics

Modular, Flexible,
Function driven

Centralized
Database and
near-Realtime
operations

One Map, Multiple
Apps

Integrates Business
groups/divisions

Enables efficient
Data gathering and
aggregation

Transparent
Records
maintenance

Traditional GIS Vs Enterprise GIS

Disparate Deployment
Point Solutions
Limited Functionalities



Business specific Deployment

Transformation

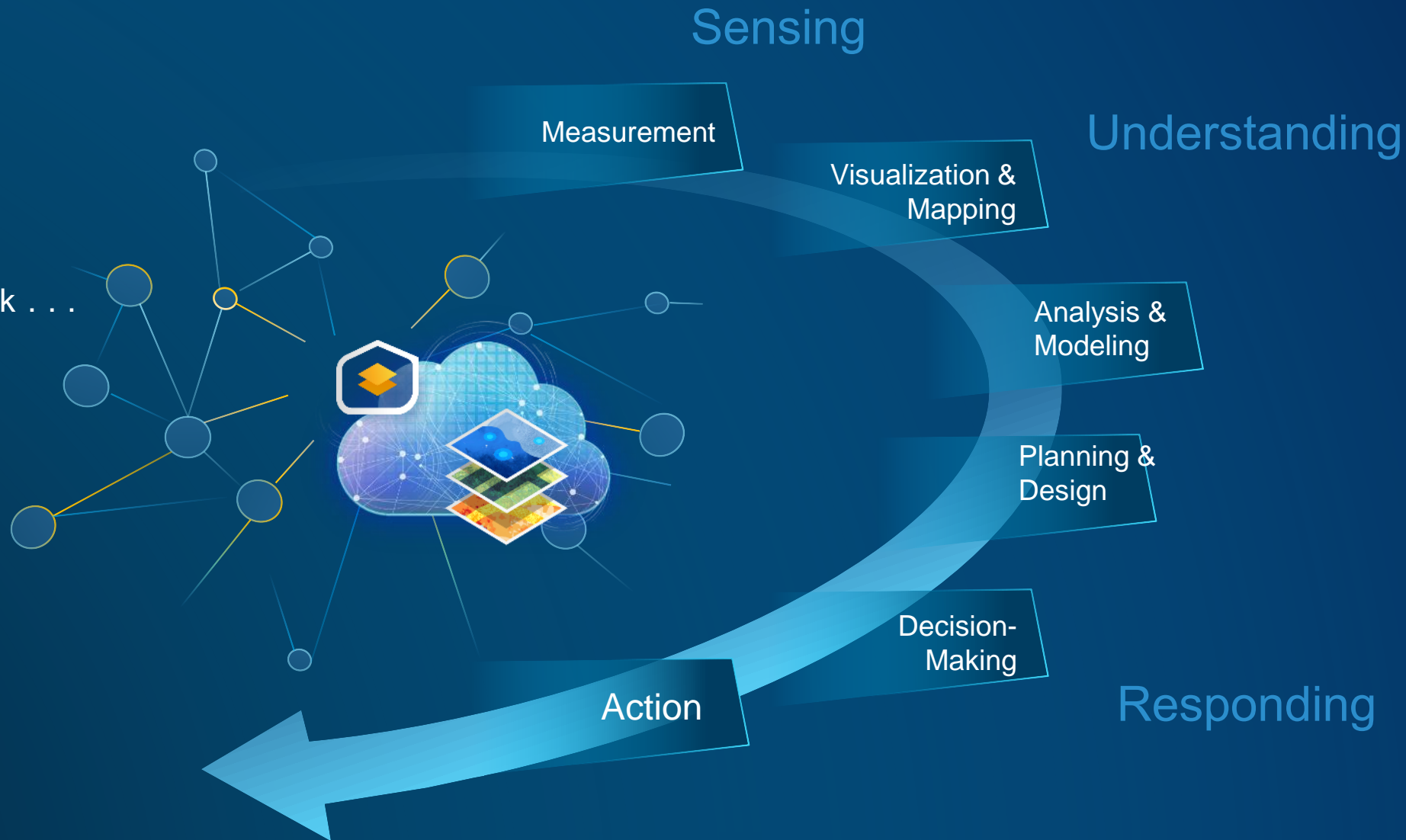
Enterprise Platform
Business Apps
Sharing and Collaboration



Empowering Organizations and Breaking Down Barriers

THE SCIENCE OF WHERE

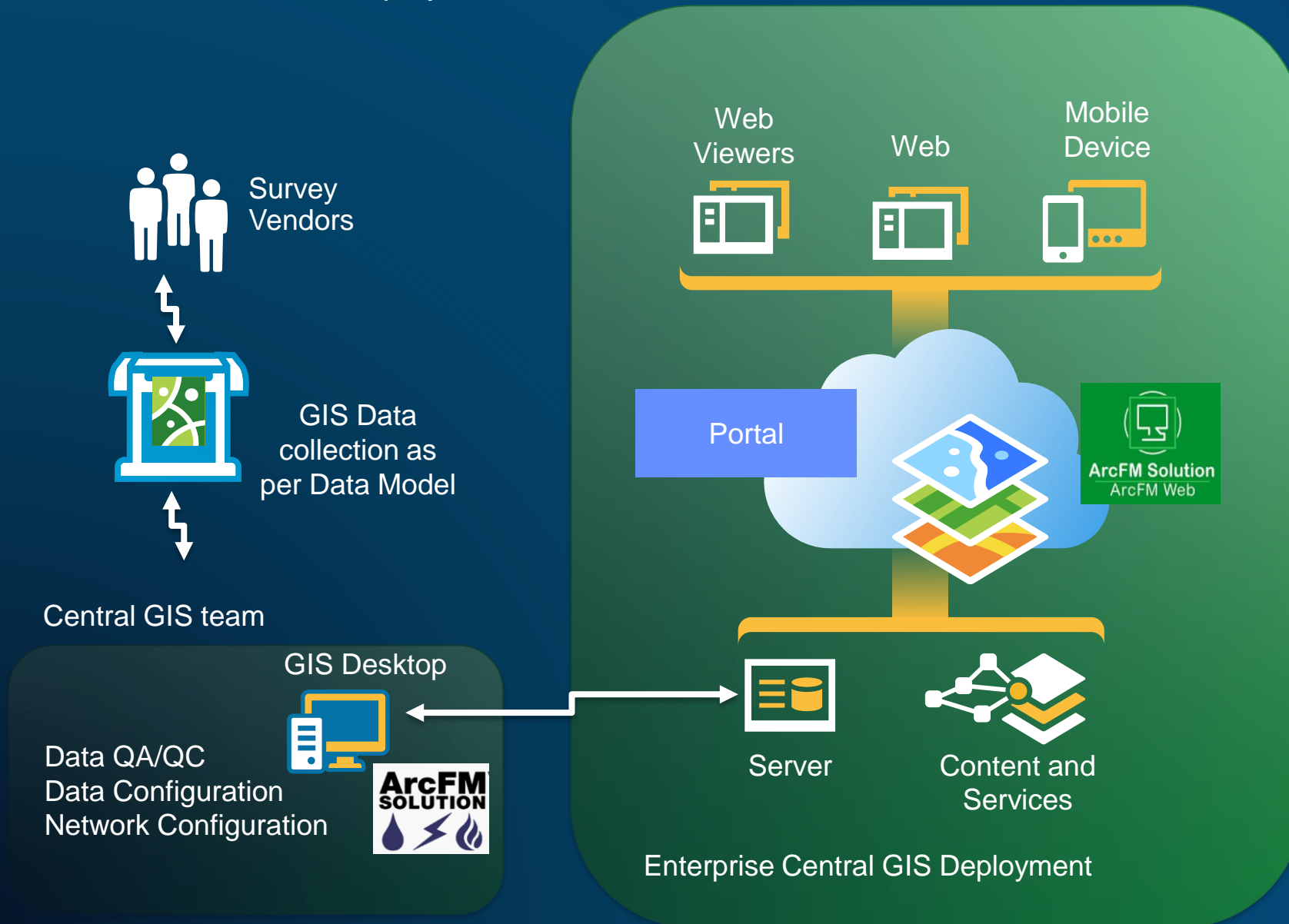
Provides the Framework . . .
. . . And Process



The Foundation for a Geospatial Infrastructure

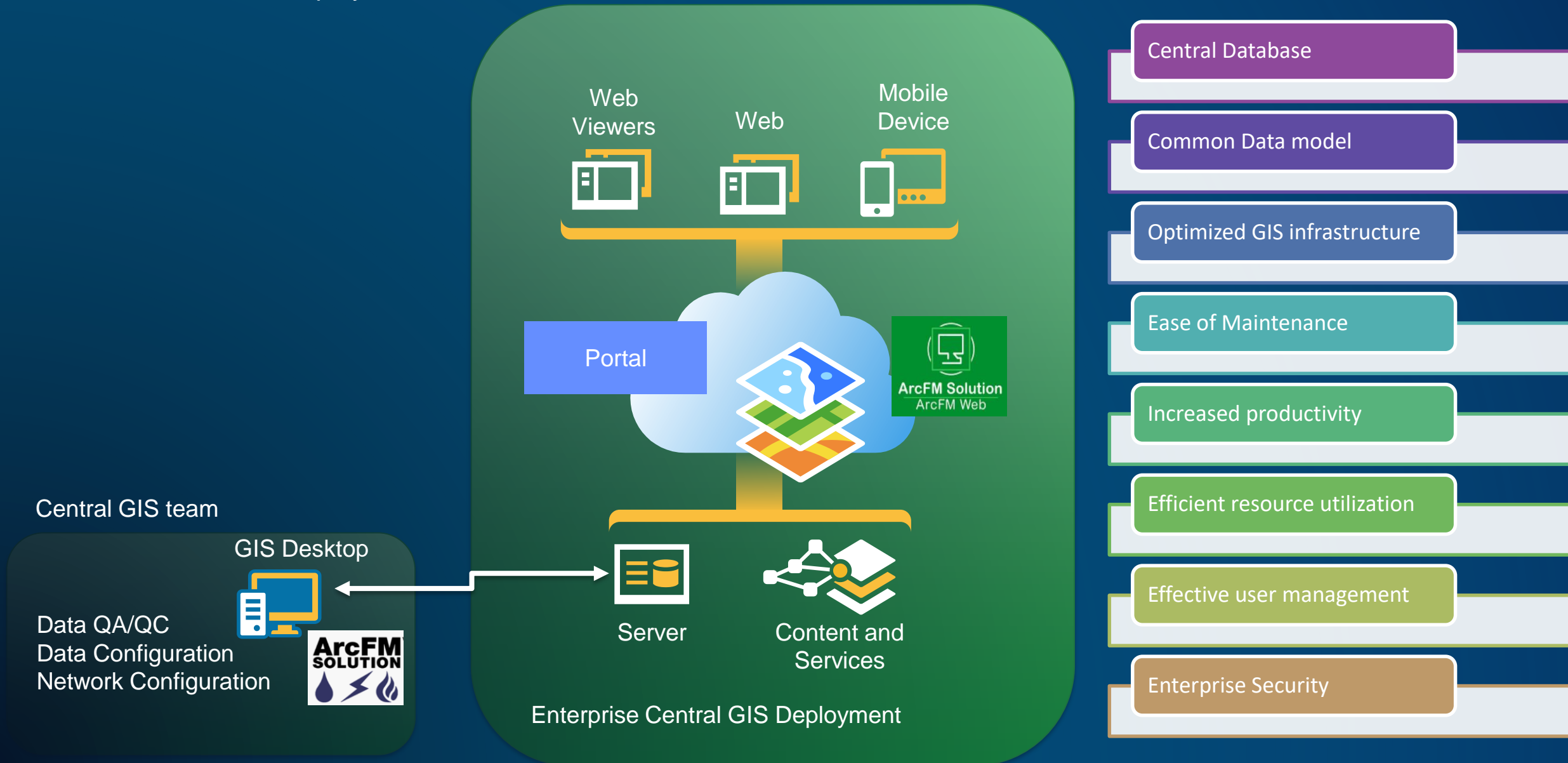
Enterprise GIS for City Gas Management

Enables centralized deployment



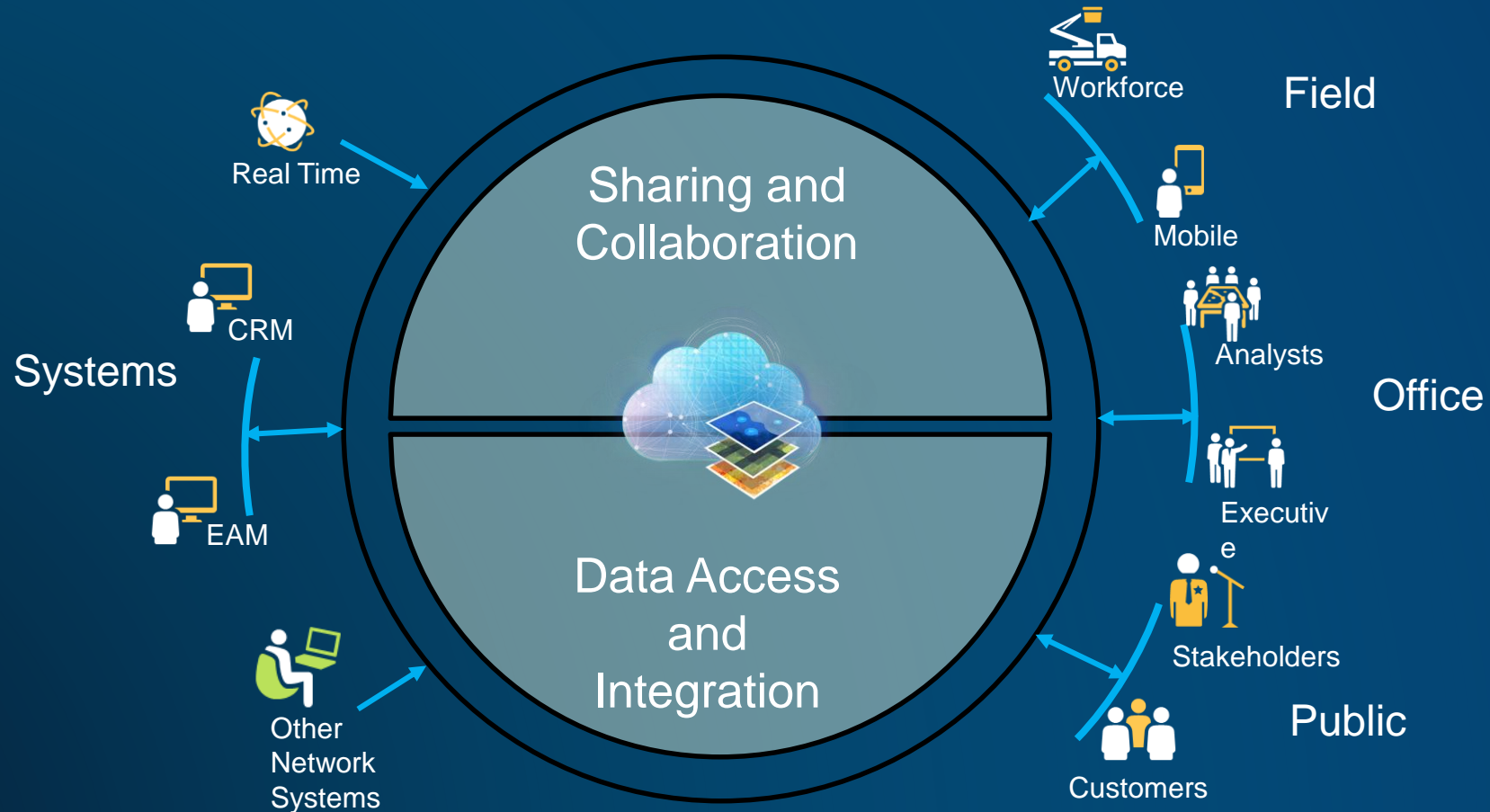
Enterprise GIS for City Gas Management

Enables centralized deployment



ArcGIS for Utilities | A Complete GIS

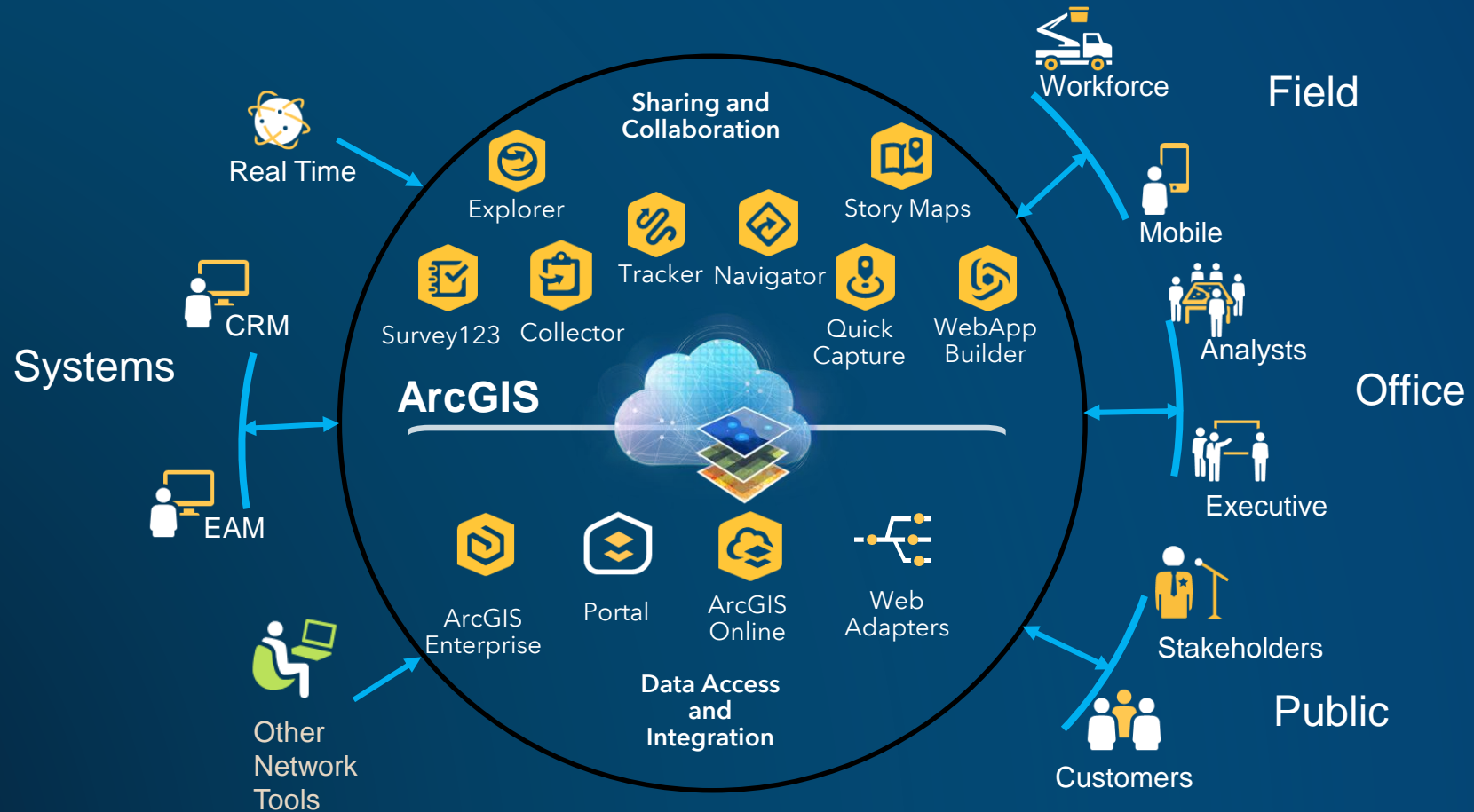
System of Engagement



Manages and promotes user collaboration and interaction...

ArcGIS for Utilities | A Complete GIS

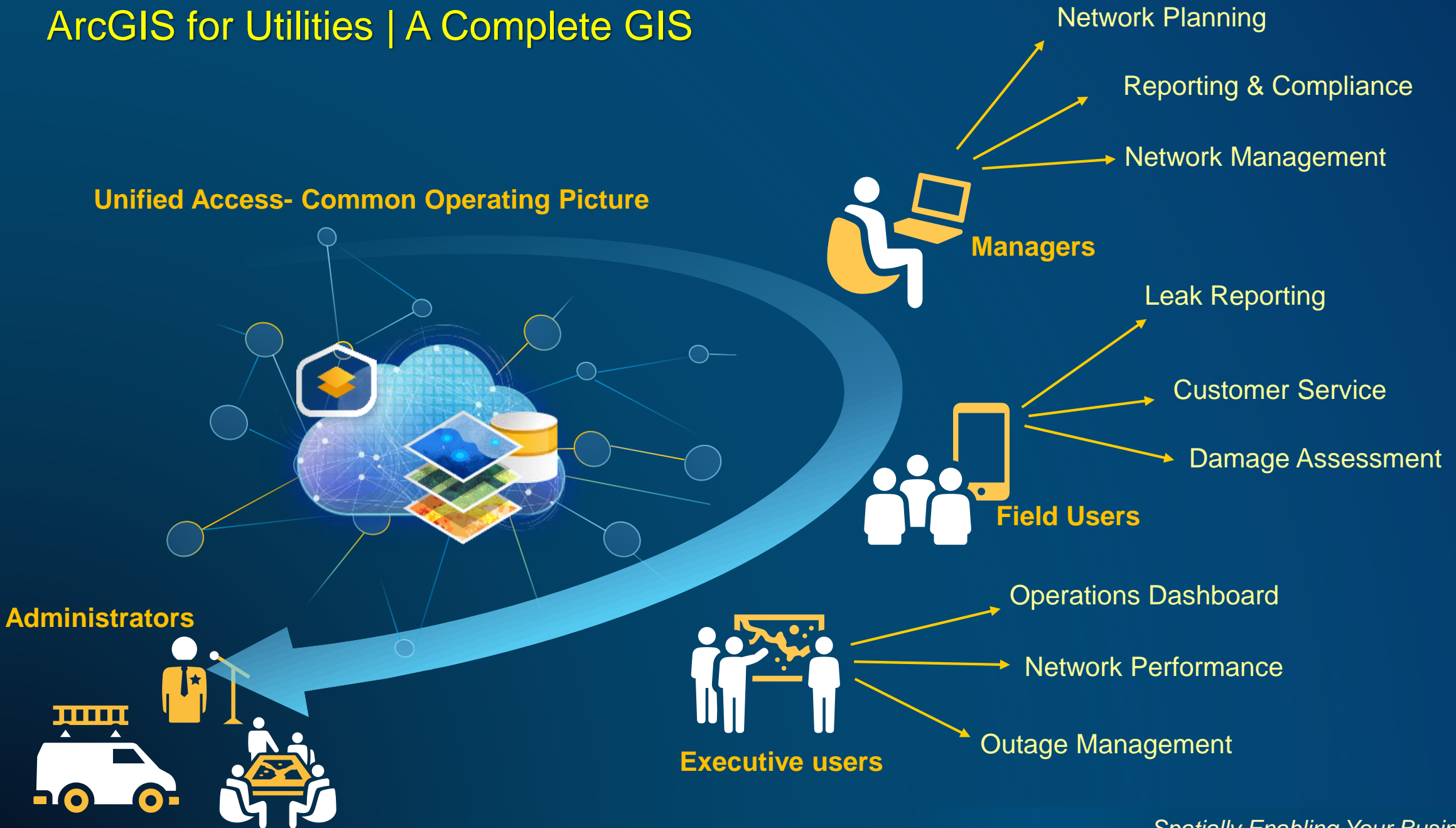
System of Engagement



Manages and promotes user collaboration and interaction...

ArcGIS for Utilities | A Complete GIS

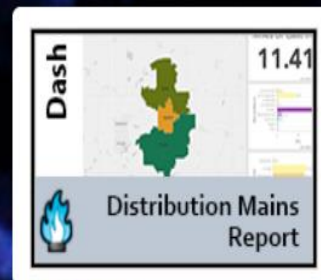
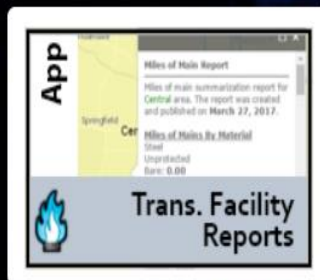
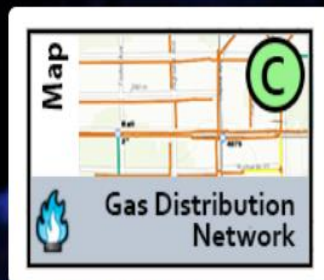
Unified Access- Common Operating Picture



Spatially Enabling Your Business



ESRI NATURAL GAS



Distribution



Transmission



Storage

Battle Creek Energy is an Esri Industry Demonstration Portal for the **Gas Utilities Industry Team**. This demonstration portal is used by Esri's global business development and sales team. Refer to the [Start Here](#) link below to get started with the Patterns & Practices Sales Enablement Resources or to access additional industries. For more information on how to use this demonstration portal, please read the User Guide below. For any questions or comments please contact the admin of this org, Jessica Altamira, at jaltamira@esri.com



Industry
Overview



Network
Modernization



Safety



Asset
Management



Customers



Innovation

City Gas Network Management

GIS Administration Portal

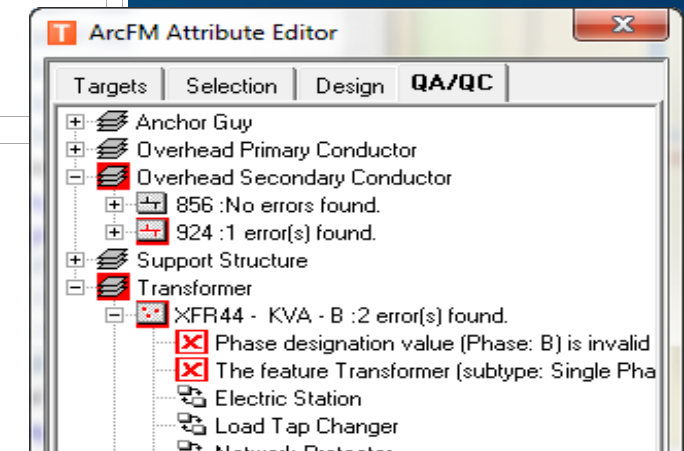
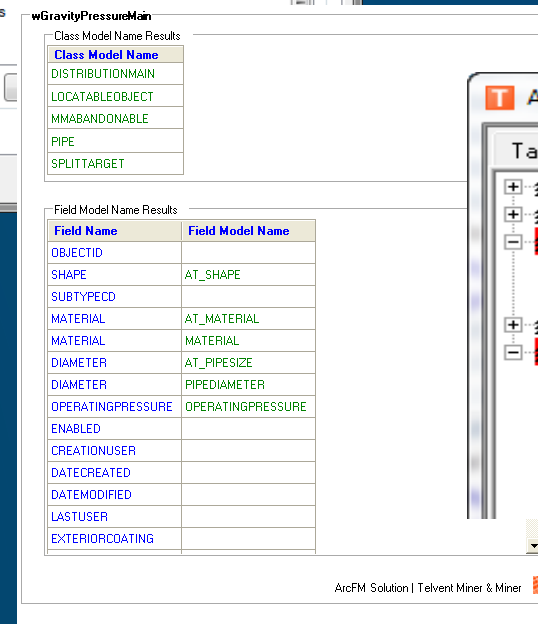
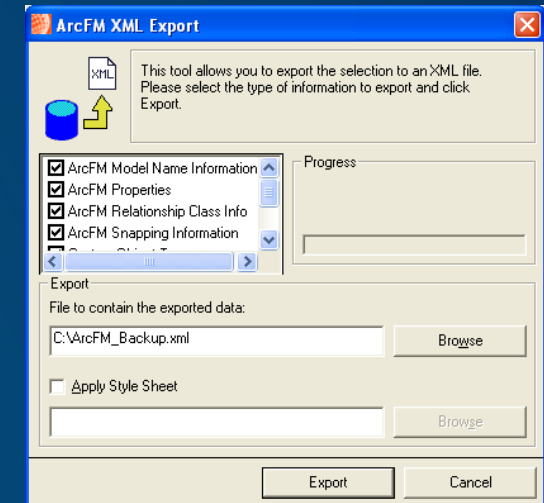
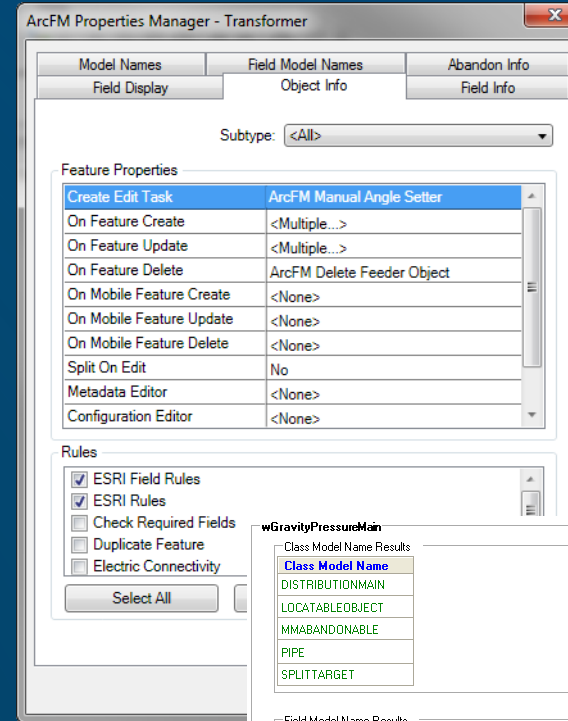
- ❖ User registration
- ❖ User management
- ❖ Group management
- ❖ Privileges management

Discover GIS applications by department.



City Gas Network Management

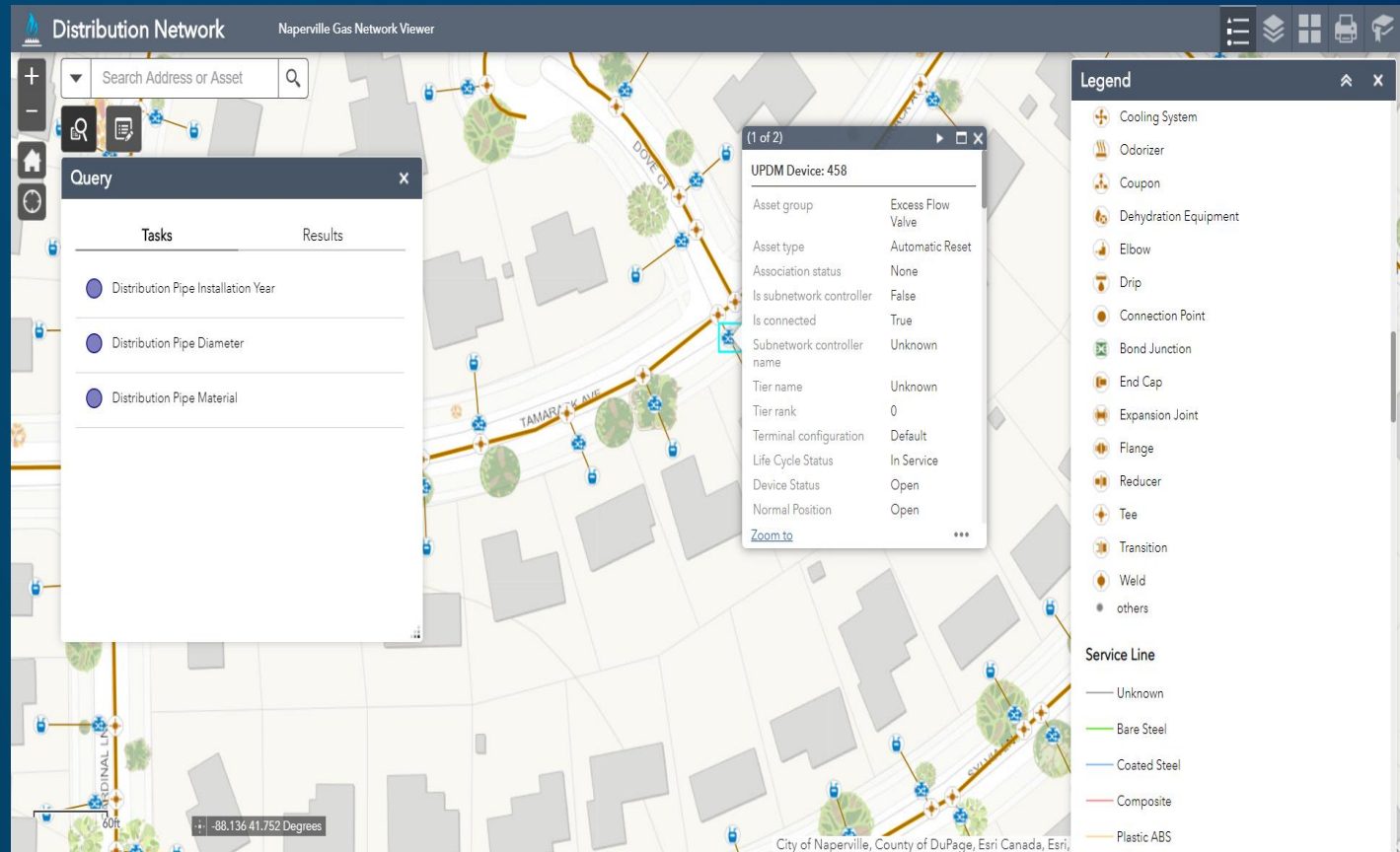
- Distribution specific Automated Business Logic
- Data Integrity Rules
 - ❖ Key Attributes
 - ❖ Open framework
 - ❖ Integration with other business systems.
 - ❖ Configurable business workflows



City Gas Network Management

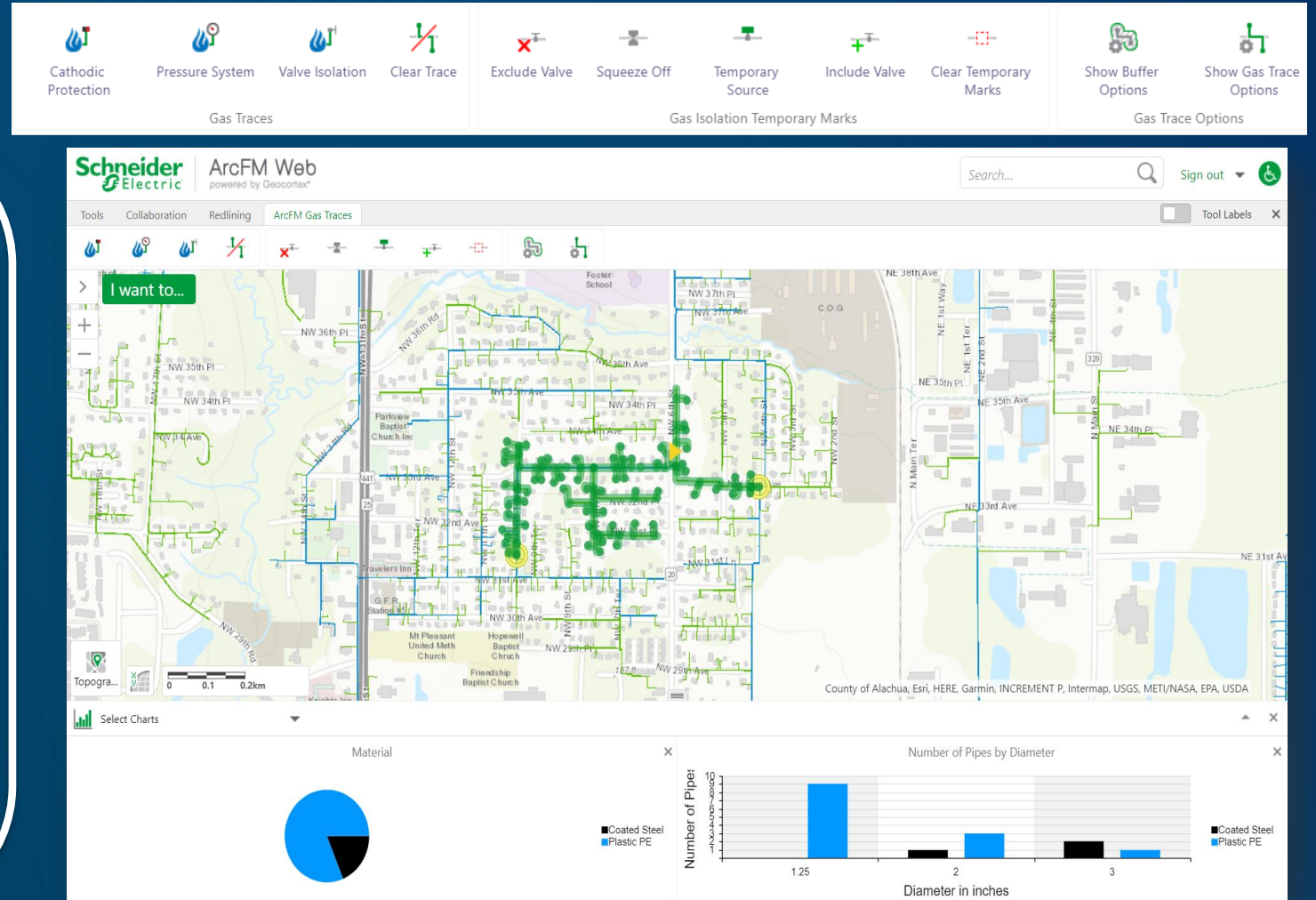
GAS Network View with standard operations

- ❖ Legend and Layer management
- ❖ Zoom, Pan,
- ❖ Measure
- ❖ Search
- ❖ Query (predefined)
- ❖ Export
- ❖ Near By
- ❖ Print



City Gas Network Management

- Intelligent Advance network Management and Analytics for Gas Distribution.
- Gas Tracing functions
 - Valve isolation Traces
 - Pressure Tracing
 - Cathodic protection Traces
 - Squeeze Off Traces



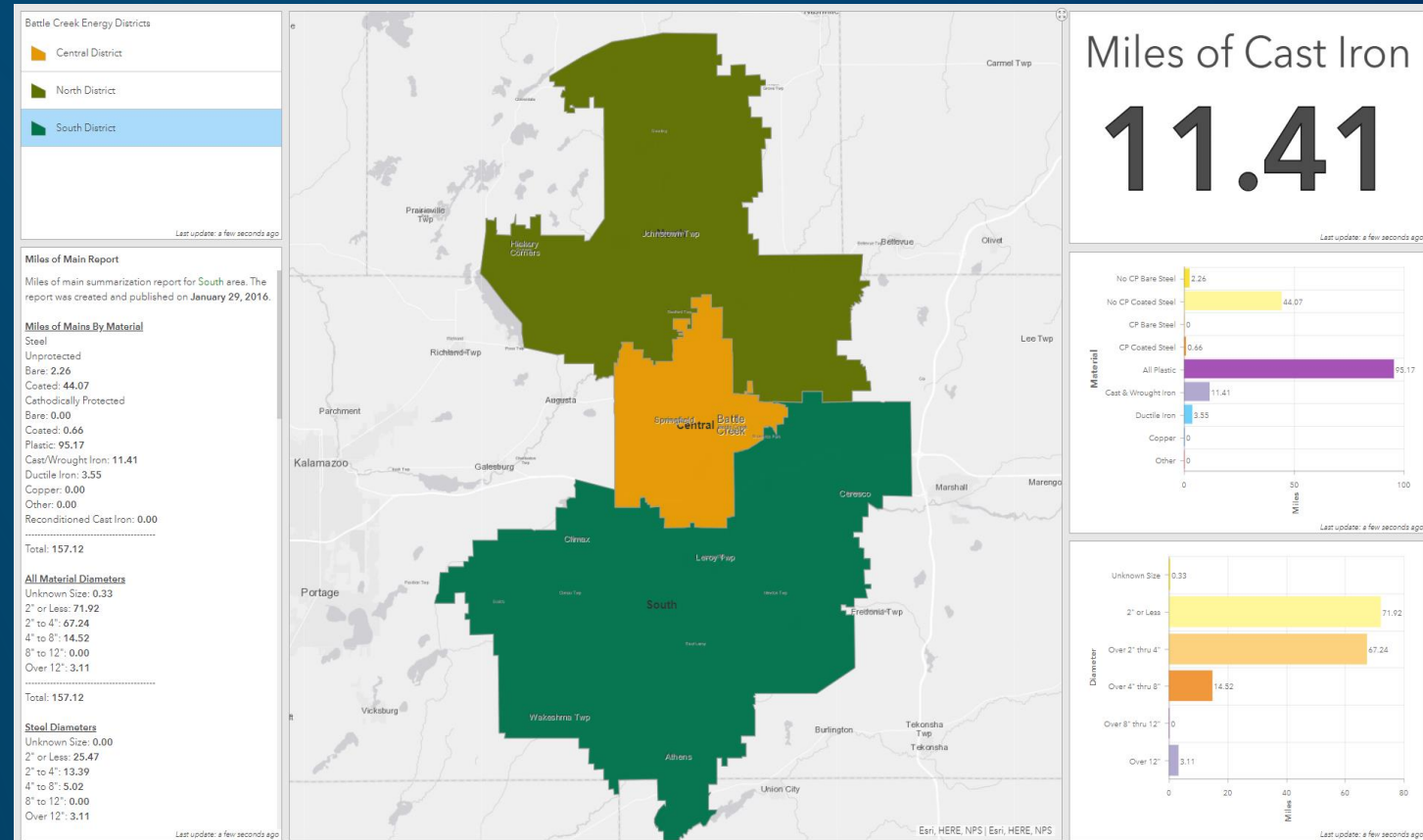
City Gas Network Management

Configurable Web, Mobile and Dashboards for Operations and Maintenance

- Dashboards:

- ❖ Network Visualization
- ❖ Network Components
- ❖ GA wise network summary
- ❖ Damage Assessment

- Field Inspection Apps



City Gas Reporting

- Regulatory Compliance Reports
- Customer Information Reports
- Geographical Area Reports
- Valve and CNG station Reports
- Potential Customer Reports
- Leak/Damage Reports
- Network Length Reports

Schneider Electric

ArcFM Web

Customer Information Report

Report generated 10/26/2020 5:51:06 AM

Name:

HARDYMAN JEFFREY S & DOROTHY

Account:

E5000226884

Address:

4400 NW 23RD AVE, STE E

City:

Schneiderville

Phone:

431-5526

Name:

TWOHIG JOHN M

Account:

E5000226218

Address:

4400 NW 23RD AVE, STE D

City:

Schneiderville

Phone:

831-9438

Name:

TWOHIG JOHN M

Account:

E5000226218

Address:

4400 NW 23RD AVE, STE D

City:

Schneiderville

Phone:

831-9438

Name:

FONCECA JULIE & LINDA S

Account:

E5000226064

Address:

4400 NW 23RD AVE, STE A

City:

Schneiderville

Phone:

395-4679

Name:

FONCECA JULIE & LINDA S

Account:

E5000226064

Address:

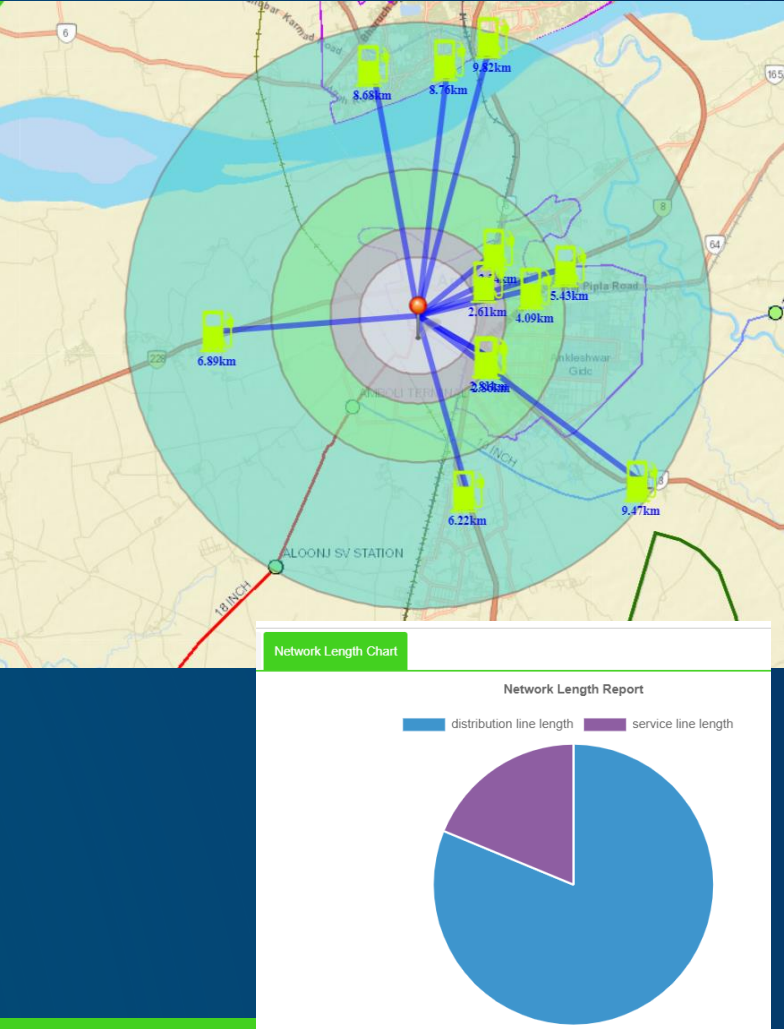
4400 NW 23RD AVE, STE A

City:

Schneiderville

Phone:

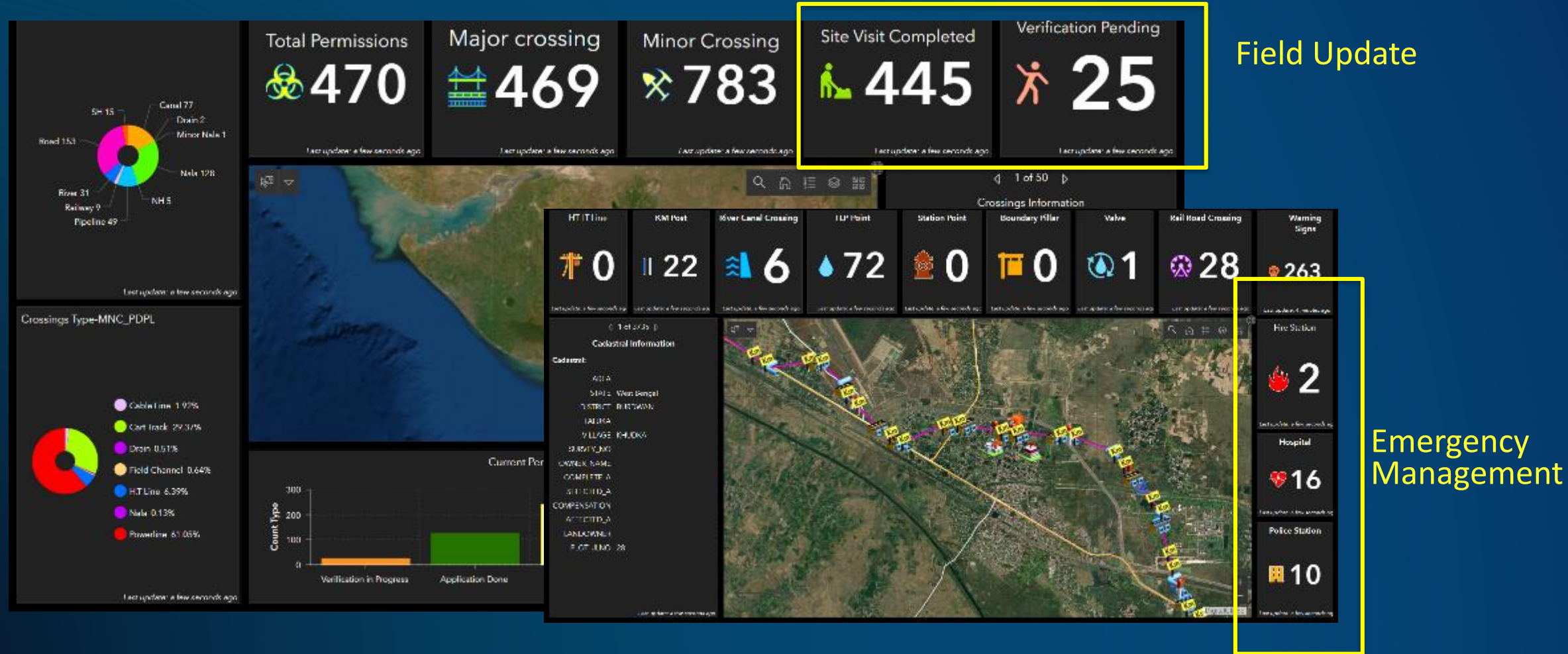
395-4679



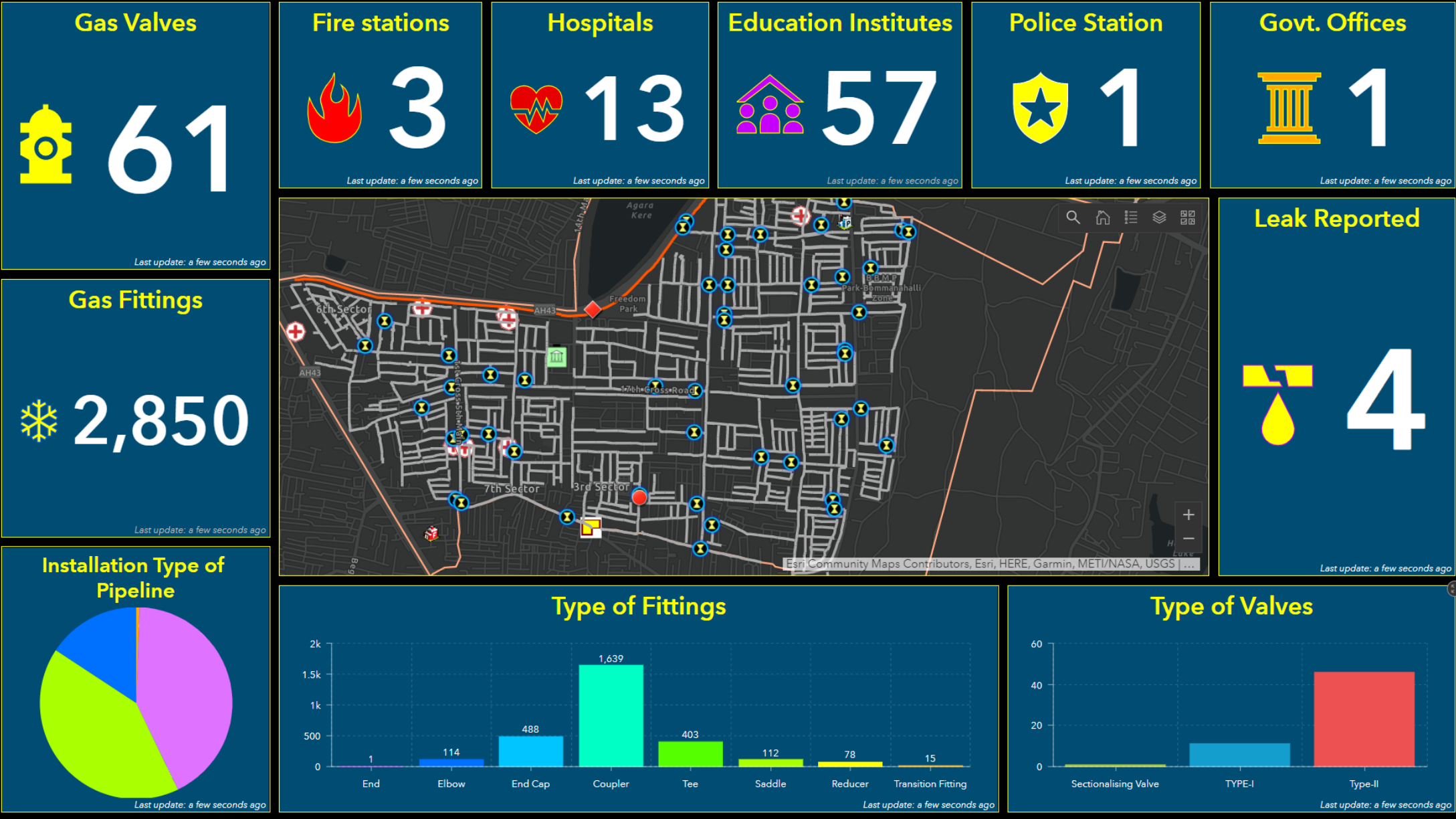
Network Length Report	
Network Length Report	Network Length Summary
Network Length Chart	
Network Type	Total Length Count(in Meters)
distribution line length	452182.837 [steel mains : 61509.343] [polyethylene : 390744.656]
service line length	104504.212 [polyethylene : 101670.343]
Export Report	

Enterprise GIS | Geo-Enabling Operational Efficiency

Project Management



City Gas - Asset Management Dashboards



Upcoming Webinars



esri India

WEBINAR

Integrating field and
back-office for efficient
gas network operations

Thursday, 05th November 2020 | 11am - 12pm IST

Register Today →



Register at <https://www.esri.in/en-in/industries/utilities/webinars>

Join GeoNet Community - Connect, Collaborate and Share experiences

Community of customers, partners, Esri staff, and other GIS and geospatial professionals

GeoNet

The Esri Community

Home

My News

Browse GeoNet ▾

Communities ▾

ArcGIS Ideas

GeoNet Resource Hub

1

▾

▾

esri

All Places >

Gas and Pipeline

Overview

Activity

Content

People

Subspaces

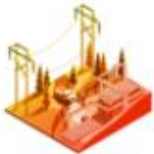
Calendar

Follow

Actions ▾

i

Welcome to the Gas and Pipeline GeoNet Community



This is a place to ask questions, read and post blogs and find content about Gas and Pipeline. To get started, watch the video below to learn more about engaging the GeoNet Community. And for comments, questions, and feedback on this space, please post them here: [GeoNet Feedback](#)

Browse Content

Read Blog

Start Discussion

MOST RECENT UPDATES

UPDM 2019 Edition

Can I migrate geometric network data to UPDM(2019) without linear referencing?

New eBook on Operations Management

ASK THE COMMUNITY

Search for content or ask a question

Ask my question

RELATED GEONET PLACES

Electric

UNANSWERED QUESTIONS



esri[™] India

THE SCIENCE OF WHERE[™]

Write to us at info@esri.in

or

visit esri.in