

# What's new in ArcGIS Enterprise

# 10.8?



Esri started this year by releasing ArcGIS Enterprise 10.8, loaded with updates and enhancements throughout the product, from administration, to data, maps, and apps. Let's have a look at what's new in ArcGIS Enterprise 10.8!

## Administrative

### • Read-only mode

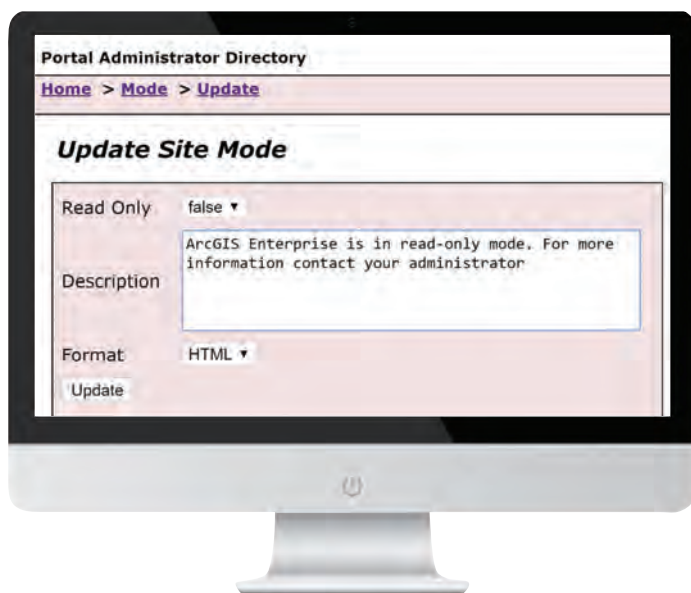
With 10.8, you can put all of ArcGIS Enterprise into read-only mode. In read-only, users can log into, and view content, in ArcGIS

Enterprise; but they will not be able to make changes to data, create or save items like web maps, or update administrative settings.

As an administrator, you can set ArcGIS Enterprise as read-only, within the portal Administrator Directory (shown below). Here, you can customize the message displayed to users, if an action is prevented because of read-only mode.

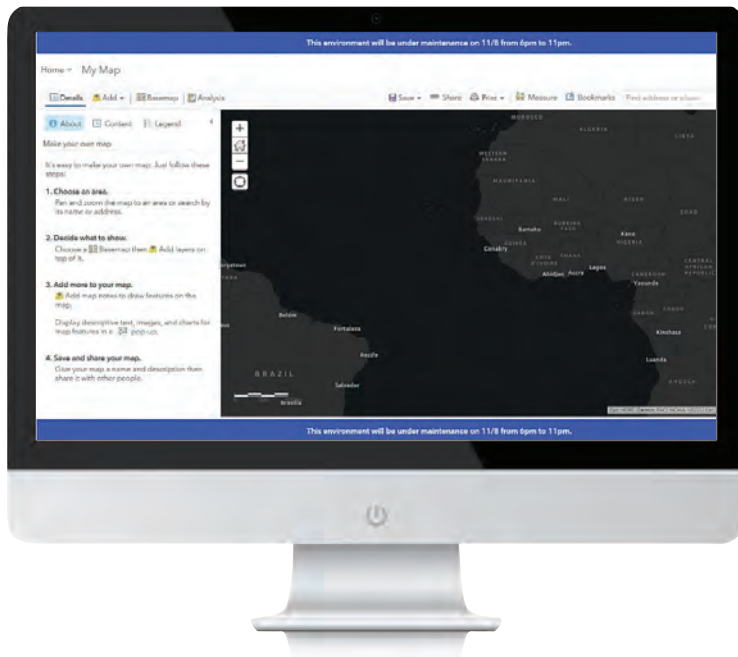
### • Information banner

With the new information banner, you can customize a static message that appears for every user at the top and bottom of each page in the Enterprise portal. Your banner can notify users of upcoming system maintenance; direct users to new



The option to set ArcGIS Enterprise as read only in the Portal Administrator Directory





The new information banner is displayed at the top and bottom of each tab of your enterprise portal

resources or information; or even help distinguish your ArcGIS Enterprise environment from your ArcGIS Online organisation.

#### • Access notice

The new access notice appears as a dialog whenever someone visits ArcGIS Enterprise and/or any URL leading to it. Before granting further access, the user must accept the notice. If the notice is declined, the user is denied from accessing the environment.

#### • New webhook events

In 10.8, new webhooks triggers are available for creating, updating, or deleting user roles. This is helpful when you have multiple administrators creating new custom roles, for users who need different privileges in ArcGIS Enterprise, and want to be sure that other administrators know of these new roles. Another webhooks enhancement in 10.8 is the ability to subscribe to specific events across all items, groups, or users.

#### • Server Manager updates

Updates include the ability to search your services by Instance Type (shared, or dedicated), and by Authoring Client.

#### Data, publishing, and services

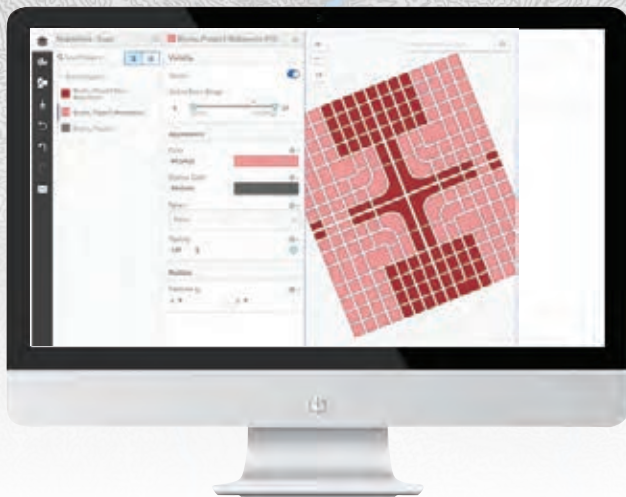
#### • Maps and apps

##### Vector tile enhancements:

ArcGIS Enterprise 10.8 brings in two new updates for vector tile layers. First is an update to the workflow for replacing vector tile layers. The Replace Layer operation allows you to replace the content of a current hosted vector tile layer, with the content from a replacement layer, while retaining the same item URL. Updates to vector tile layers don't stop here! Starting with this release, you can customise vector tile layers in the Map Viewer using the new ArcGIS Vector Tile Style Editor app. This will enable you to style vector layers and basemaps to best suit your map's cartography needs.



Replace layer can be accessed from the overview page on your vector tile layer



The new Vector Tile Style Editor allows you to deeply customise your layers

**3D enhancements:** In Scene Viewer, there are new Smart Mapping styles to help you style your lines and polygons in new ways. You can now display pop-ups on Point Cloud Scene layers, and even select individual points to inspect their properties to see attributes, such as elevation. In your scenes, you can animate water and take advantage of the new 3D models, such as bicycles and fire hydrants, to bring your scenes to life.

**New configurable app templates:** Three new configurable application templates are available in 10.8 - Attachment Viewer; Nearby; and, Zone Lookup. App templates make it easy to build your own app focusing on a key workflow or theme.

#### • New Web AppBuilder widgets

Enhancements to ArcGIS Web AppBuilder in 10.8 include new widgets, as well as Widget and Theme enhancements. Highlights include the new Business Analyst widget, Query and Filter widget, and Public Notification.

#### • ArcGIS Enterprise Sites

The first update you may notice in ArcGIS Enterprise Sites on 10.8 is the updated user interface. There is now a streamlined display for creating and managing all of your sites. Also in 10.8, you can quickly see how many sites have been created, including their URL, and how many pages make up each site. The ability to clone a site within your environment is an added feature in the recent

update. Also, for sites, you can now assign site administrators on a per-site basis.

### Group enhancements

New options are available for groups within your Enterprise portal. As a group owner and/or manager, you can choose to hide the list of the group members, on the Members tab of the group page, when creating a new group.

### Server roles

- ArcGIS GeoAnalytics Server now includes the new tool Find Dwell Locations, which identifies areas of idling with no movement.
- With ArcGIS GeoEvent Server (real-time tracking), there is a new Quick Start Guide available. When using GeoEvent, you will see enhancements to GeoEvent Manager's service designer. Inputs and outputs are now stopped by default, once created.
- ArcGIS Image Server includes new multidimensional raster analysis tools and tasks, as well as enhancements to OrthoMaker.
- In ArcGIS Notebook Server, there is a new Notebook Manager interface to manage your notebooks. You can also collapse sections within your notebook, and schedule notebooks.

### Documentation updates

There have been many fantastic updates to ArcGIS Enterprise documentation and resources. One example is the new applications landing page, which highlights the different types of apps that can be used with ArcGIS Enterprise. Other welcome additions include introductory topics like Services in ArcGIS Enterprise and Services, and portal items. These (and more) topics are all included on the new essentials tab.