

Site Scan for ArcGIS



Site Scan for ArcGIS is an end-to-end cloud-based drone mapping software designed to revolutionize imagery collection, processing, and analysis. It maintains a complete picture of your drone inventory and flight history with automatic fleet management. It helps to stay up to date with accurate imagery when needed with repeatable flight plans that ensure high quality data capture when flying your drones. Site Scan securely process imagery in a scalable cloud environment to create high-quality 2D and 3D imagery products that can be quickly shared throughout your organization on any device. It also saves time by using the measurement and analysis tools to get the answers you need from your data.

What does Site Scan for ArcGIS do?

Site Scan for ArcGIS provides drone flight planning, fleet management, image processing, and analysis capabilities as Software as a Service (SaaS). Site Scan delivers a complete end-to-end solution for drone imaging projects.

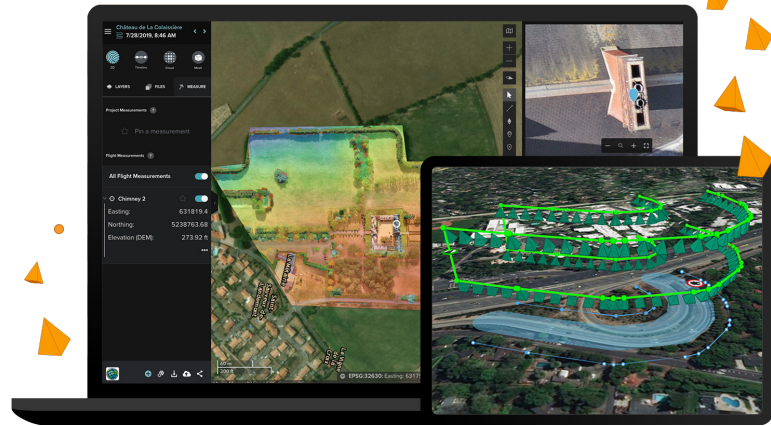
With Site Scan, drone operators can:

- Plan and execute drone flights and manage flight data and metadata to support project requirements.
- Manage their drone fleet to run safe and efficient drone operations.
- Generate 2D and 3D mapping and analytics products from drone imagery.
- Publish drone mapping products to ArcGIS Online, ArcGIS Enterprise, and Autodesk BIM 360.

Is Site Scan for ArcGIS an app, an ArcGIS Desktop extension, or something else?

Site Scan for ArcGIS consists of two applications:

- Site Scan Flight Planning is a flight planning



and control application for drone operators that runs on iOS (iPad). The app is integrated with ArcGIS platform and allows users to plan automated flights in 2D or 3D, and allows the user to control the drone in flight.

- Site Scan Manager is a web-based application for processing, managing, and performing analysis on drone imagery. The app also includes an administrative dashboard for managing users and project permissions, available to users with administrator privileges.

How does it make things easier?

Autonomous drone flights

- Increase efficiency by creating and sharing advanced 3D flight plans between your pilots.
- Overlay 2D and 3D data from ArcGIS Online and ArcGIS Enterprise for enhanced flight safety and data capture quality.
- Manage your data in the field and upload it to the cloud.

Process and analyze in the cloud

- Unlimited amounts of drone flight data is processed into 2D and 3D outputs through a scalable cloud environment.



- High accuracy is ensured through automatic ground control point detection.
- Easily visualize and analyze results directly in a web browser.

Quickly share drone and project data

- Share information with your stakeholders in formats they understand, whether in a 3D view or as a report or map within ArcGIS Online or ArcGIS Enterprise
- Collect and process files using reality capture technology within Autodesk BIM 360; or export in common file formats.

Drone fleet management

- Fleet management keeps track of flights, drone hardware, and pilot flight history—all in one place.
- Drone program managers can create custom preflight checklists for their teams and store responses within the cloud.

What types of imagery can I process with Site Scan Manager?

Images must be geotagged JPEG files. You can process thermal and multispectral imagery. Video cannot be processed into maps and models, but can be used in conjunction with geospatial video logs recorded on the flight planning app to be used with FMV tools in ArcMap and ArcGIS Pro.

How it Works with ArcGIS?

Site Scan for ArcGIS is a comprehensive drone software solution that you can use with your ArcGIS Online or ArcGIS Enterprise data.

ArcGIS Online and ArcGIS Enterprise

Import your organization's saved GIS data and share your data with your ArcGIS Online organization and ArcGIS Enterprise for further analysis and collaboration.

ArcGIS QuickCapture

Use ArcGIS QuickCapture together with Site Scan for ArcGIS to capture features remotely using the

drone's location.

ArcGIS Drone2Map

If working in an offline environment, use the Site Scan for ArcGIS Limited Edition iOS app to connect with ArcGIS Drone2Map and process, analyze, and export your drone data.

How do Site Scan for ArcGIS licenses work?

There are currently three license types:

- **Viewer license:** These users can see project data in Site Scan Manager and use the measurement tools but can't make any edits or changes.
- **Access license:** These users can use the full functionality of Site Scan Manager in their assigned projects, including creating and persisting measurements, processing existing data and downloading processed outputs. They can also create a drone flight plan in Site Scan Manager but aren't able to fly a drone with Site Scan Flight Planning. Administrator functions, such as User Management and Fleet Management, require this license type.
- **Operator license:** In addition to the capabilities of an Access license, these users can fly a drone using Site Scan Flight Planning and upload images for processing.