

FliGIS

GIS-Based Solution For Airlines To Automate Flight Path Operations

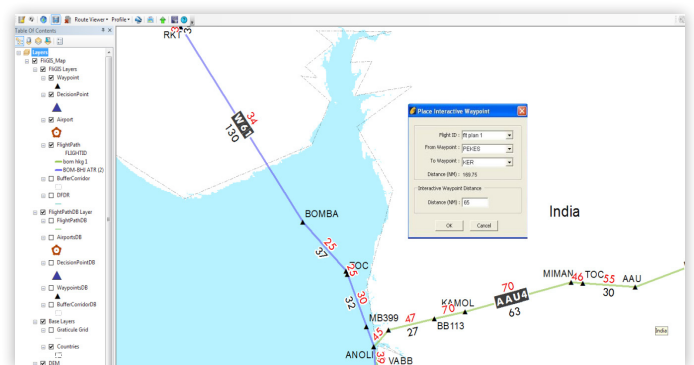


Solution Summary

NeST IT's FliGIS is an automated solution for flight path planning operations. The solution is developed for airlines that manage their operations manually. The solution is a boon for airlines as manually obtaining maximum elevation values and visualizing alternative flight routes from terrain profiles is time consuming, resource-intensive, expensive and error prone. Also, route planners need to create terrain profile charts that are essential for flight navigation, within stipulated timeframes. Using the customized solution FliGIS, airlines are able to successfully automate flight path planning, reduce cost, and mitigate the risk of manual error.

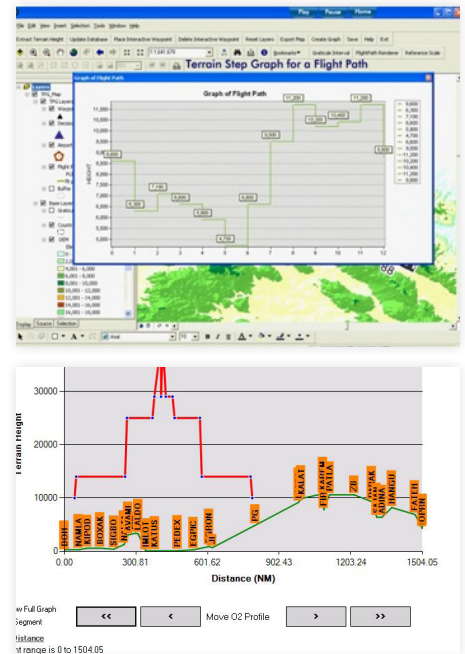
Solution Description

FliGIS, based on Esri's ArcGIS Desktop automates the flight path planning operations. The solution provides country boundaries, the Graticule Grid (a grid of longitude and latitude lines upon which maps are overlaid) and an airline navigation-specific Digital Elevation Model (DEM) as base layers. The solution enables a thematic representation of DEM data, provides auto generated routes, and identifies escape routes, decision points and alternate airports. This provides airlines with a 360-degree view of the flight plans and Digital Flight Data Recorder (DFDR) data, among others, on a single dashboard. The solution not only improves flight navigation, it also reduces paperwork and manual processes and cuts costs.



Key Features

- An interface to view and save flight plans.
- Route auto-generation and extraction of terrains between sets of way points from an underlying DEM.
- Rendering of multiple flight plans.
- DEM data representation with relevant details.
- Identification of airports, escape routes, alternative airports, and route decision points.
- Support for adding & managing waypoints, airports, and decision points.
- Updating airport and waypoint databases.
- A graphical tool for creating and analyzing oxygen, chemical, and gaseous profiles throughout the flight plan at different heights.



About the Partner

NeST Information Technologies Pvt. Ltd., the premier software arm of US \$ 200 M NeST Group, delivers solutions - IT, Process, People or Turnkey solutions - that are technology and delivery optimized to drive up the ROI for our esteemed customers. Whether in the form of bespoke development, robust software products, COTS (Commercial Off-The-Shelf Software) implementation, production support & maintenance, process outsourcing, staff augmentation, training or consulting, NeST IT's divisions specializing in Aerospace, Banking & Financial Services, Healthcare IT, Insurance spaces along with teams focused on Enterprise solutions, GIS, Digital technologies and an autonomous Quality & Testing team, innovate and engineer custom solutions that are consumed by a variety of customers - actual users like the leading Banks, Insurance companies, Airlines, tertiary healthcare providers, manufacturers and Government - and intermediaries like system integrators, OEMs and ISVs across the world.

Customer Testimonial:

“Esri’s GIS-based flight path planning solution has enabled us to improve operations by automating flight path planning, reducing costs, and mitigating the risk of manual error”.

— A Prominent Airliner